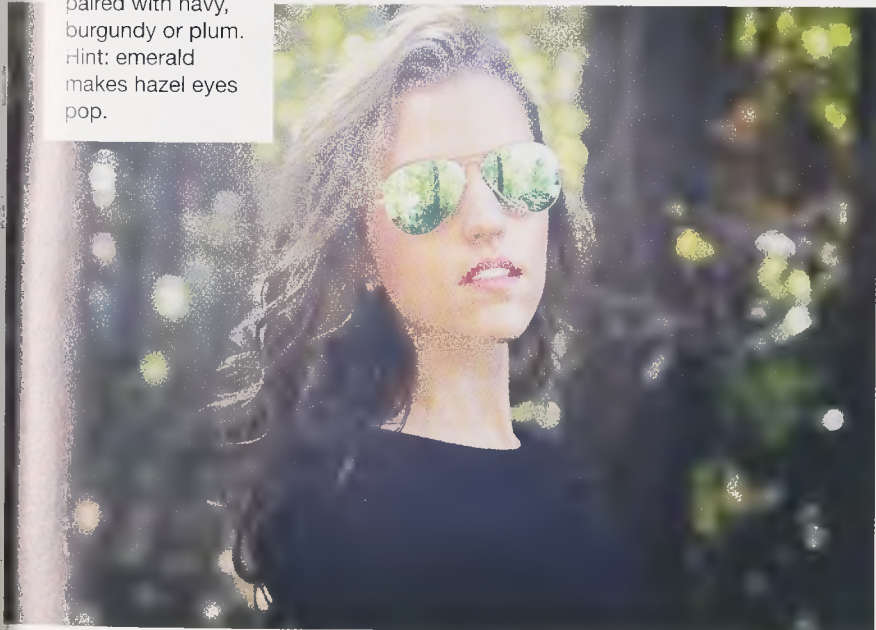


EMERALD SHADES

This jewel tone is perfect for the holiday season. The rich hue complements all skin tones and stands out best when paired with navy, burgundy or plum. Hint: emerald makes hazel eyes pop.



PATTERNED DRESSES

Tired of the LBD? We are too. Put some pizzazz back into your wardrobe with not-so-boring frocks of every color and print. Printed dresses are fresh and vibrant and will really show off your personality. To avoid looking like wallpaper, choose a non-busy print with hues in the same color family.



ON MEGAN
Free People
dress; Nordstrom
boots; Hue tights.

ON VICTOR
Steve Madden
quilted jacket.



QUILTED OUTERWEAR

The quilted jacket is versatile, waterproof and provides substantial warmth without the bulk. Ideal for layering, this style is seasonless and can be worn from fall to spring. If you're looking for a jacket to invest in, this is a practical and stylish option.