

# THE GUILFORDIAN

VOLUME IV.

GUILFORD COLLEGE, N. C., DECEMBER 19, 1917

NUMBER 13

## RED CROSS PLUS SOCIAL

DECORATIONS, EATS, AND  
BOOTHES, GENERATE HOLIDAY  
SPIRIT.

Owing to the unusual conditions which prevail at this time it was deemed advisable by those in authority to substitute for the annual Y. W. C. A. bazaar a somewhat less elaborate entertainment. This took place in Founders Hall Dec. 15.

The students' parlor and the two Society halls were thrown open with decks cleared for social activity and a general good time. Evergreens and lights richly shaded, lent a festive atmosphere to the occasion and a fledgling Christmas tree graced one of the nooks and challenged every one to get the holiday spirit.

The number of booths was limited this year to one and this one was devoted entirely to things which tickle the palate and warm the heart of a hungry man. Over this frankly alluring corner Anne Shamburger and Mary Mendenhall presided with fitting charm of manner and dispensed hot chocolate, sandwiches and pop corn with willing hands.

The Christmas tree was gradually stripped of its ornaments as one by one various persons found articles thereon which were to their liking. Fern Highfill proved herself a most efficient saleswoman and the Japanese pictures, puzzles, and curios of every sort found instant favor and were purchased with a zest and enthusiasm which must have flattered a representative of "The Land of the Rising Sun."

After every one had satisfied his or her (and in many cases his and her) wants both temporal and otherwise the affair took on much the appearance of a stereotyped social and sociology entre deux became the order of the evening. The entertainment proved quite a success in every sense. The proceeds go to swell the fund which Guilford has already contributed to Red Cross work.

### FITZGERALD ELECTED FOOTBALL MANAGER.

Paul V. Fitzgerald, '19, was elected manager of the football team for next season. Guilford's football record this season has already brought numerous requests from other colleges for places on their schedules, and it appears that Manager Fitzgerald will be able to arrange an interesting series of games.

### NEWLIN RE-ELECTED CAPTAIN.

At a recent meeting of the football team Algia Inman Newlin was re-elected captain. Capt. Newlin is an all state full back. Thruout the season he has displayed the qualities of leadership as well as an ability to tear a hole in the enemy's line whenever it was necessary.

## "THE MESSIAH" BRILLIANTLY SUNG

CHRISTMAS MUSICAL SERVICE  
REACHES AN UNUSUALLY  
HIGH STANDARD.

On last Sunday night the most famous parts of Handel's Oratorio "The Messiah" were sung by the Guilford College chorus in Memorial Hall before an appreciative and delighted audience. The rendition was in all respects an unqualified success. As the last Hallelujah died away the hearers, rapt and spellbound, realized that another great event had passed into Guilford's musical history. The performers, most of whom had never before been connected with so ambitious an undertaking, rose to the heights demanded by the occasion and so carried their audience along with them that the Messianic story acquired a power and significance which only great music could give it.

In the Hallelujah chorus, which marked the close of the recital the climax was reached. The composer had said in writing this chorus "all heaven seemed opened before him" and the singers rendered it with such enthusiasm and power that they seemed to have caught the spirit of the composer and to echo the angelic choir itself.

The services opened with the congregation singing the hymn "O Little Town of Bethlehem." Rev. Edgar Williams followed with a prayer and Scripture reading, selecting those passages of Scripture around which the Oratorio was built. He added explanatory remarks regarding the origin of the Messiah and the circumstances under which Handel came to write it.



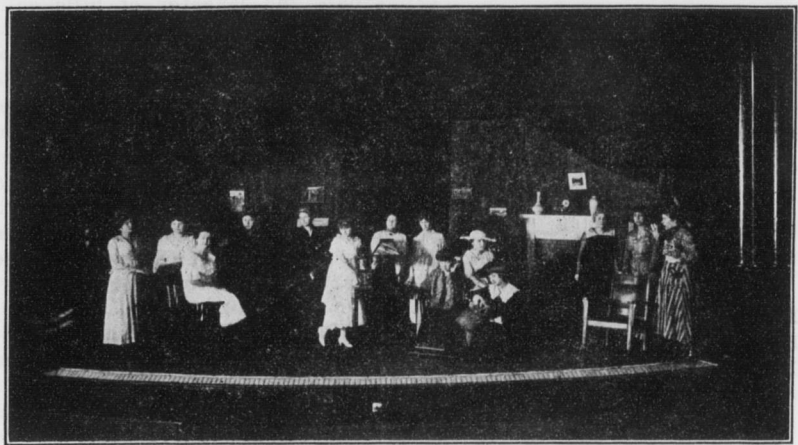
MISS JENNIE W. PAPWORTH  
Director of the Guilford Chorus.

Then followed another hymn by the congregation "Joy to the World" by Handel. Two carols by the chorus succeeded this—"The First Noel" and "Silent Night." These two familiar songs were given added beauty by the excellence of their rendition.

Mr. Roy then gave a violin solo, Handel's "Largo," in his own inimitable manner.

The second part of the program was opened by a discussion of the

(Continued on fourth page)



Cast of "The Girl in a Thousand" — Scene from the Third Act.

## GUILFORD TO DEBATE A. & E.

SECOND MEETING OF THE TWO  
COLLEGES TO BE STAGED IN  
RALEIGH IN MARCH.

Arrangements are now rapidly nearing completion for a second debate between Guilford and the State Agricultural and Engineering College. Last year the debate was won by Guilford and a big effort will be put forth this year to repeat the victory. The debate will take place in some auditorium in Raleigh early in March, the exact spot and time to be decided on later.

It being Guilford's turn to propose the question the following was submitted, "Resolved that Congress should enact a law providing for the compulsory arbitration of industrial disputes." This query will be debated by the high schools this spring and it was believed that interest would be added to the debate if the same question should be selected. A. and E. chose to defend the affirmative. It is believed that Guilford's continuance in intercollegiate debating will inspire much interest in that art thruout the college. A series of class debates have been arranged as preliminaries.

### JUNIOR GIRLS ENTERTAIN.

At the regular meeting of the Junior class held last Tuesday evening two main items claimed the attention of the members—the decision upon a class ring and the election of class debators. No definite steps were taken in procuring the ring, but a committee consisting of Ruth Coltrane, Joseph White and Kate Smith was appointed to confer with a committee from the Freshman class and the faculty on fixing a standard class ring.

As a result of an election the following men will represent the class as debators: Shields Cameron, Jos. D. White and Paul Fitzgerald.

Business being dispensed with the class adjourned to a most pleasant social hour. The boys of the class were overwhelmed by the kind hospitality of the girls. They were served with hot chocolate, cakes and toasted marshmallows. When the time arrived for departure each boy felt that his love for each Junior hostess was full to overflowing.

## BASKET BALL SCHEDULE NEARING COMPLETION

MANAGER GRISSOM PREPARING  
A FINE LIST OF GAMES.

Manager Grissom announces that the basketball schedule has been nearly completed. The dates listed below have been definitely arranged for with one or two of them subject to possible changes. He is at present at work on a northern trip thro Virginia during the week of February 11th to 16th and a southern trip into South Carolina during the week of January 28th to Feb. 2nd.

The following dates give promise of an interesting basketball season:

- Jan. 21—Atlantic Christian College at Guilford College.
- Jan. 24—Trinity College at Durham.
- Jan. 25—A. & E. at Raleigh.
- Jan. 26—Wake Forest at Wake Forest.
- Feb. 2—Davidson at Davidson.
- Feb. 4—Carolina at G. C.
- Feb. 9—Wake Forest at G. C.
- Feb. 11—A. & E. at G. C.
- Feb. 19—Trinity at G. C.
- Feb. 22—University of Carolina at Chapel Hill.
- Feb. 23—Durham Y. M. C. A. at Durham.
- Feb. 25—Davidson at G. C.

### STUDENT BASKETBALL LEAGUE ORGANIZED.

All who have basketball ambitions but who have not succeeded in making the Varsity will have this winter an excellent chance to show what they can do. Four teams have been organized and each team will play eight games. The records of all the players and teams will be carefully kept and the team which leads the league at the finish will hold a well deserved place of honor. The Army, Navy, Marines, and Aviators are the names of the four contestants for the championship. It was believed that this method of developing new material was better than the old system of class games as those who did not have class standing would have a chance to play and also the bitterness of feeling and intense partisanship which so often accompanied the

(Continued on fourth page)