

THE GUILFORDIAN

Published weekly by the Zatasian, Henry Clay, and Philomathean Literary Societies.



EDITORIAL STAFF

James M. Harper . . . Editor-in-Chief
Ruth Outland . . . Managing Editor
Joe Cude . . . Athletic Editor
Sinclair Williams . . . Associate Editor
Mabel Ingold . . . Associate Editor
Miss N. Era Lasley . . . Alumni Editor
Ernest Scarboro . . . Asst. Alumni Editor
Miss Dorothy Gilbert . . . Faculty Adviser
Philip W. Furnas . . . Faculty Adviser

REPORTERS

Earl Dickerson . . . Gertrude Hinshaw
Carrie Teague . . . Grace Bulla
Margaret Fawcett . . . Marie Barnes
Norma Belle Wilson . . . Eugene Hire

BUSINESS STAFF

Hale Newlin . . . Business Manager
Mollie Parker, Asst. Business Manager
Charles Coble . . . Advertising Mgr.
Elma Fawcett . . . Secretary
Glenn Robertson . . . Circulation Mgr.

Address all communications to THE GUILFORDIAN, Guilford College, N. C.

Subscription price . . . \$1.50 per year

Entered at the post office in Guilford College, N. C., as second-class mail matter.

Another Clean-Up Day

Now that the grass is beginning to turn green again and all the leaves have fallen, the days are warm and are growing longer and spring is really here, why not let's have another clean-up day?

Guilford has one of the most naturally beautiful campuses in the state and it is time that the natural beauty of spring be given a chance to show forth from beneath the bed of leaves that covers the campus.

Last year a day was set aside for this purpose; all classes were disbanded for the day, every one put on his old clothes and got busy raking, burning, and hauling the leaves. The day was one of mutual enjoyment: the students had a great time while they were working and the college was saved the expense of hiring some one to do the work.

We suggest that, there at least be some thought given to this matter. We are sure that the idea would appeal to the majority of the students and we believe that the faculty would also approve of such a step.

Progressives

One of the chief improvements mentioned in the report of Dr. Binford to the Board of Trustees at their last regular meeting was the rapid advancement of the music department. Though steps for this improvement have been going on for several years, the greatest strides have been made last year and this.

Last year Mr. Max Noah came to Guilford as music instructor. He was the first full-time director of the Men's Glee Club and under his guidance this organization has come to be one of the most successful and valuable institutions on the campus.

Not content alone with the success of the Minnesingers, Mr. Noah then organized the Girls' Glee Club, known as the Euphonians, and the Community Choral Society.

All this was a splendid start but evidently Mr. Noah felt that he was incapable of bearing the burden of responsibility alone, for when he returned he brought with him an able and willing helper,

Mrs. Noah. Their work at Guilford this year cannot be lauded too highly. Mrs. Noah took over the full-time directorship of the Euphonians and they have had a remarkably successful season. Relieved of the directorship of that organization, Mr. Noah developed the Minnesingers until they were able to win second place in the state glee club contest.

The Messiah, given by the Community Choral Society, was a musical triumph for Guilford College.

Now plans are under way to convert the old Y. M. C. A. building into a music hall. These steps have come in regular order, marking a path of steady progress, and these two directors have succeeded in placing the department of music in the foreground of Guilford College activities.

Coach Shepard

It was learned during the past week that Coach Norman Shepard will not return to Guilford next year. This statement came as a surprise and shock to the students and members of the alumni association who are well pleased with the athletic record of Guilford this year under his management.

Coach leaves Guilford to assume the role of head coach at Randolph-Macon in Virginia. Doubtless he will get more for his services at the larger institution and his contract is for three years.

We join in the general sentiment of hating to see Shepard leave Guilford. He is doubtless the best coach that has been at Guilford for several years. The Quaker football team was one of the most successful that ever represented the local institution and followers of the Quaker fortune were even more optimistic over next year's possibilities.

In addition to Coach Shepard's success in a material way, he seemed to fit in well with the general policies and ideas of the college. However, Coach is only half the reason we hate to see him go. He may have been the active board of strategy, but it was Mrs. Shepard who served the boys suppers that make them forget the hard knocks of the athletic contests. She and Coach Shepard will be sorely missed at Guilford College next year.

It is going to be hard to replace him and as yet there are no definite prospects in view, but it is hoped that the administration will be as fortunate in replacing him as they were Pat Crawford last year.

Introspection

Recently there has existed a decided state of unrest among the girls on the campus in regard to the present statutes of the Women's Student Council.

Members of the council, as well as the majority of the other girls, have become offended at the solution of certain incidents which have come up from time to time. They feel that the council is not fulfilling the purpose for which it was created, that of giving the girls a mode of self-government.

Whether this be the truth or not, we are not in position to say. However, we do happen to know the opinions of many of the girls in regard to the situation. They feel

that by a steady shearing process they have been shorn of their duties and privileges as council members until at last their so-called student government is but a joke—a joke of which they are the butt.

Unfortunately these expressions of dissatisfaction alluded to above have been forcibly expressed only in small groups in more or less private places. This is cowardly. Furthermore, little close-together, I'll-tell-you-you-tell-me groups of this kind are a detestable form of gossip.

These little indignation groups are also dangerous in that they may become vicarious reactions. It would be far better to have one real, honest-to-goodness outburst than to have a brooding, smouldering atmosphere of dissatisfaction pervade the campus for the rest of the year.

Surely the offending parties are not altogether unreasonable.

If the girls really have a grievance, they should not mind laying the facts squarely before that person or persons. Just what is the matter? Are the Guilford girls like the mice who were going to tie

a bell on the cat's neck so they could always hear her and escape? Everything went along fine, the mice were righteously angry; they bought the bell and all were ready but nowhere could there be found a mouse who would consent to do the job. The project was abandoned.

Is this to be the solution to the present difficulties on the Guilford campus?

RAINBOW CAFE

LUNCH

101 West Market Street

Opposite Jefferson Standard

"GOOD THINGS TO EAT"

Patronize the Guilfordian Advertisers

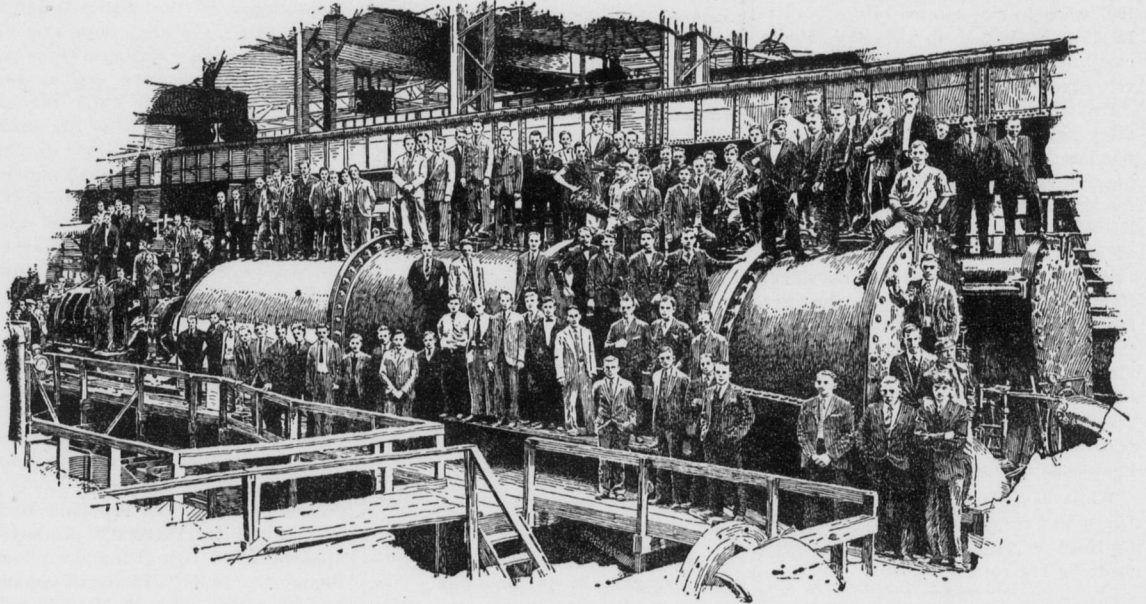


HANES COLLEGE COMBINATION

Nifty Shirt and classy Shorts. They bring out your muscular lines and fill you with pep. Fellows wearing them are head liners for style. Comfort, Service and Style are built into Hanes Shirts and Shorts. Shirts are white. Colors galore in Shorts. 50c, 75c and \$1 per garment. If you still stick to Athletic Union Suits or prefer the warmth of ribbed garments you'll find just what you want in Hanes.

Sold everywhere at popular prices.

P. H. HANES KNITTING COMPANY WINSTON-SALEM, N. C.



Generating Brain Power

Brain power, not horsepower, is the chief operating requirement of the electrical industry.

This requirement must be continuously anticipated to provide leaders for the future. Accordingly, each year, more than 400 picked college graduates come to the General Electric Company for a post-graduate course in electrical science.

With a faculty including inventors and engineers of international distinction, something more than electrical knowledge is imparted to these young men. Here they also find inspiration which prepares them for leadership in this electrical age.



You will see this monogram on the powerful motors of an electric locomotive and on the convenience outlet where you plug in a floor lamp—always and everywhere it is a safe guide to electrical quality and dependability.

GENERAL ELECTRIC

GENERAL ELECTRIC COMPANY, SCHENECTADY, NEW YORK

95-637DH