

## SUITER ANNOUNCES VARIED PROGRAM FOR COMING YEAR

Entertainment Course Is Expected to Surpass Those Given Formerly.

### SALVI FIRST ON SCHEDULE

World-Famous Harpist and His Instrumental Quintet to Appear Tonight; Di Costa, Next Month.

The Guilford College Community Entertainment course, a non-profit undertaking sponsored by student organizations and a number of the college faculty, will present this year a total of nine programs, according to Prof. W. O. Suiter, director of the course. It is believed by Suiter and his aides that the program to be offered this year will equal or surpass anything presented in previous years.

The initial performance of the course will feature Alberto Salvi, world-famous harpist, and his instrumental quintet, whose other members are Eric Sorontin, violinist; Ernest Guntermann, flutist; Alexa Robert, viola; and Goffredo Mazzari, violoncello. Their appearance is scheduled for October 10.

The Di Crosta-Ferrari company is to present an original variety musicale as the second installment of the course. Andrea di Crosta, leader of the troupe, specializes in brass and reed instruments, while Lenora Ferrari di Crosta is both a vocalist and a piano accordionist. They will appear on Tuesday evening, November 10.

Another musical program of a similar nature is set for Tuesday, November 17. Everett Cutler, tenor pianist, and Helen Griffin Cutler, soprano violinist, will present a program of melodies, old and new, with special vocal and instrumental arrangements. Also of this company is Helen Spivey, reader.

A schedule of programs lasting into early spring is in preparation. Further announcements regarding the course will appear from time to time in the GUILFORDIAN.

## ARRANGEMENT OF BOOKS CHANGED IN LIBRARY

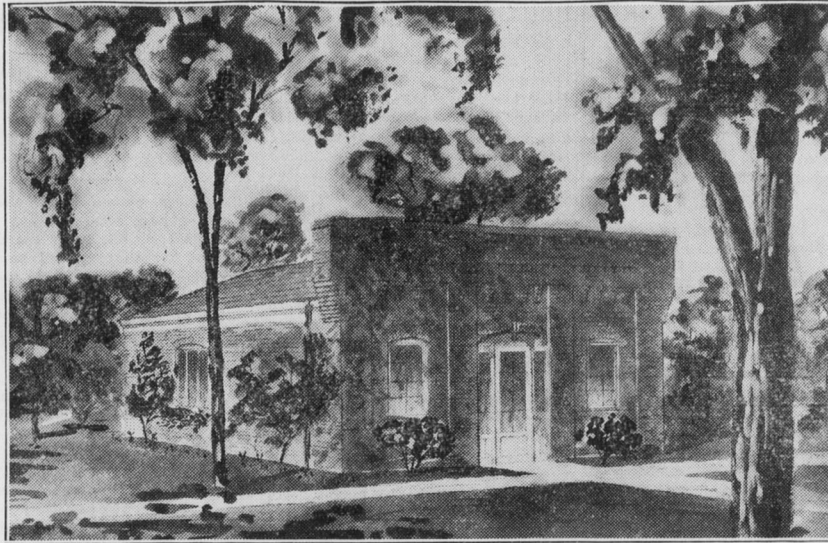
All Literature and History Books Are Placed in Reading Room at Recommendation of Architect.

Extensive changes have been made in the arrangement of books in the library, according to librarian Katherine C. Ricks, the chief among these being the placement of all literature and history in the reading room. This step, recommended by the architect for the college, Alfred Busselle, Jr., during his visit to the campus last year, was made possible by the recent receipt of 100 new book shelves, relieving the serious shortage of shelf space. The removal of the literature and history books to the front library is expected greatly to facilitate the use of them, since the time spent in obtaining books is reduced to a minimum.

Bound periodicals formerly placed in the reading room, and all Quaker literature has been collected in the upper portion of the stacks vacated by the history and literature books.

### Former Guilfordians Wed

It is of interest to Guilfordians to learn of the September marriage of Fred Newman, class of '36, and Adelaide Tucker, class of '37. The couple are living in Columbia, S. C., where the bridegroom is engaged in business.



## GUILFORD CHORAL GROUP PLANS TOUR

Choir Seeks Concerts for Christmas Holidays; Florida Goal of Projected Itinerary.

### DR. WEIS' SECOND YEAR

The A Cappella Choir is at present booking concerts for a Southern tour which is scheduled to take place during the Christmas holidays. This year's itinerary is expected to include Charlotte, Savannah, Jacksonville, Winterhaven, Tampa, St. Petersburg, Tallahassee, Macon, Atlanta, Hendersonville, and Asheville. While the exact details of the tour are indefinite as yet, they are being worked out as rapidly as possible.

L. T. New, chairman of the choir committee, requests anyone who has friends in any of the towns along the projected route to notify him at once.

This is the choir's second season under the baton of Dr. E. H. F. Weis, who succeeded Prof. Max Noah as Guilford's Director of Music. Last year's tour, the first under his guidance, included concerts in the states of New Jersey, Pennsylvania, New York, Maryland, Virginia, as well as a broadcast over NBC's Blue network. It was decided that this year's tour should be scheduled for the Christmas holidays, instead of the spring vacation as usual, because of the extreme shortness of the latter period on the current calendar. The customary routine will probably be in force again next year.

### DR. MILNER SPEAKS TO SCOUT UNIVERSITY

Dr. Clyde A. Milner, president of Guilford College, presided at the first session of the Scouter's University in Greensboro this week, and later in the evening addressed the gathering of scout leaders on the subject of "The Boy's Nature and Needs." Dr. Milner will address the Young Friends Meeting during the sessions of Baltimore Yearly Meeting on Saturday, October 24, while on a trip east which will include meetings in Philadelphia and New York.

The Scouter's University has been planned to give leadership training to active scout leaders in addition to introducing new men to the work. Five sessions are being held, and the programs include classes on the psychology of the adolescent and instruction in the Boy Scout program.

## BUSSELLE COMPLETES DRAWINGS FOR HUT

Alfred Busselle, architect for the college, has completed the plans for the Student Affairs building—now an abandoned structure west of Founders'. The building is expected to be completely rejuvenated by Home-Coming Day. It is being erected with funds raised by the student body last spring as their project for the Centennial year.

## JOINT Y SPONSORS DISCUSSION GROUPS

Teachers Will Entertain Groups of Students in Their Homes Each Week.

### TO MEET WITH COLLEGE FACULTY

Discussion groups held in the homes of various faculty members are to be featured by the joint Ys during the month of November, according to recent announcement made by the cabinet of the joint group. These meetings, which are designed to promote closer fellowship between the faculty and the student body, will begin on Sunday evening, November 1, and will continue through the evenings of the three Sundays following.

Ruth Hollis and Greig Ritchie have been named as a committee to make final arrangements for these programs, which have been in preparation for some time. All students desirous of attending are requested to sign up with either of them or with some other joint Y cabinet member. The names received will be divided into groups which will rotate from discussion group to discussion group on successive Sundays.

Other plans which have been discussed are the problem of a speaker for the Sunday afternoon Vesper at the end of the month and possibilities of leaving the campus for a day of discussion and fellowship.

The Ys plan to continue to sponsor the political meetings.

### Prominent Socialist Speaks

Alton Lawrence, North Carolina state secretary of the Socialist party, addressed the student body as a part of the joint Y's political program on Thursday evening, October 8. His talk was the third of a series of similar lectures designed to stir student interest in national politics. The other two speakers were, respectively, a Republican and a Democrat.

## ART TO BE EXHIBITED AT FOUNDER'S HALL

Display Is Made up Entirely of Paintings by Contemporary American Artists.

### WPA SPONSORS SHOWING

The first exhibit of Living American Art will be shown at Founders' hall beginning October 15, and remaining there for three weeks or a month. This display is made up entirely of the works of contemporary artists, and is being sponsored by the W. P. A. Free catalogues containing interesting data about the pictures and the artists will be given to each student.

These W. P. A. displays are being presented simultaneously throughout the United States, and Guilford College will have the pleasure of three other exhibits during this school year, which will occur on December 15, February 15, and April 15.

The pictures will be scattered through the hall, the dining room, and the parlors at Founders' hall, and it is hoped that all students who do not take their meals there will find some occasion for going to Founders' and availing themselves of the opportunity of seeing this display of the trend of modern art.

## SPANISH DEPT. OFFERS PROGRAM TO STUDENTS

Professor Helen Cutting, Greensboro College, to Speak; Advanced Students to Present Brief Play.

Miss Helen Cutting, professor of Spanish at Greensboro college, will give an address sponsored by the Spanish department Friday evening, October 16 in Memorial Hall. Miss Cutting has recently returned from Spain where she spent some time. Some of the advanced Spanish students will give a short Spanish play in connection with the address.

Miss Huth, Professor of Spanish and German, took several of the advanced German students to Chapel Hill to visit the German Department. During their visit, they heard a number of records in the German language. They also heard the German Latte-Lehman songs.

After they had visited the department, they had lunch with the German instructors of the University. To end their visit they spent some time with Dr. and Mrs. Fredarich in their beautiful Swiss home.

The students accompanying Miss Huth were Martha Furnas, Gloria Leslie, Alvin Meibohm, and Elizabeth Wetherald.

## ICEBOUND SELECTED FOR FALL PLAY OF DRAMA GROUP

Owen Davis Play Revived—Formerly Presented by Council in 1928.

### WAS PREVIOUSLY PRAISED

Rural Setting Featured in Depiction of Money-Mad Family; Will be Storm Center.

Guilford stage artists are again speculating over the possibilities of becoming part of the dramatis personae, since Professor Philip W. Furnas, director of dramatics, last week announced Owen Davis' play, "Icebound," as the fall production of the Dramatic council. The drama will be presented on the night of November 7 at a part of the centennial home-coming celebration.

The popular reception accorded "Icebound" when it was first presented at Guilford eight years ago is considered by the council as sufficient to warrant its revival. The play, although fundamentally a drama, might also be considered a comedy in many ways, according to Professor Furnas.

A rural setting is the background for a plot woven intricately about the egocentric interests of a selfish family, the members of which are sadly disappointed to find that the wealthy matriarch, who dies early in the action of the play, has left the bulk of her estate to one of the household servants. The balance of the play deals with the heiress' management of the estate and her attempts to regenerate the ne'er-do-well youngest son of the family.

Among those who are being considered as members of the cast are Sam Smith, Jack Lindley, J. L. Jones, Dorothy Woodward, Mary Priscilla Blouch, Beatrice Rohr, Emily Cleaver, Sybil Barrow, James Parsons, George Wilson, Milton Anderson, Martha Sharpe, Rebecca Weant, Ruth Stilson, Jean Blanchard, Esther Stilson, and Tom Hollis.

## FINE ARTS CLUB ELECTS OFFICERS FOR YEAR

McIver, McBane, and Lucke Perform on Short Program Held at Second Meeting.

### BETTY TROTTER IS PRESIDENT

The Fine Arts club held its second meeting of the year October 5 at the Music building. The program was as follows:

Dawn and Dusk (Dorothy Forster)—Mary McBane.

Ho! Mr. Piper (Curran)—Frances McIver.

Carnival Prowls at Vienna (Schumann)—Mary McBane.

Grey Day in the Luxembourg Garden (Manz)—Betsy Lucke.

After this program a short business meeting was held at which the officers for the year were elected. Betty Trotter, president; Mina Donnell, vice-president; and Peggy Mostrom, secretary-treasurer, were those chosen to hold office. Plans for increasing the membership were also discussed at the business meeting.

### Guilfordian Trio Broadcasts

A group of musically talented Guilfordians have been signed up as a regular weekly feature at Greensboro's station, WBIG. They are Charles Weyll, Rodman Scott, Bill Furman and Annie Lee Fitzgerald and their broadcast, as the "Guilfordian Trio," may be heard each Monday evening over WBIG.