

STUDENTS VOICE VITAL SOCIAL NEEDS

MILNER TO ATTEND ASSOCIATION OF SOUTHERN COLLEGES

Group to Meet This Year in Richmond, Va.; Noted Schoolmen to Be Present.

FOUR CLASSES INCLUDED

Purpose of Meeting Is to Establish Relations Between Secondary Schools and Colleges.

Dr. Clyde A. Milner went to Richmond, Va., December 2, to represent Guilford at the annual meeting of the Southern Association of Colleges. The purpose of this association is to help establish relations between secondary schools and institutions of higher education within the territory of the association, and to consider all subjects that tend to the promotion of interests common to colleges and secondary schools.

This association includes four classes, colleges and universities, schools and individuals. An institution is judged according to the several standards set up in the constitution of the association, which are as follows: Entrance requirements, requirements for graduation, number of degrees (discourages the conferring of a multiplicity of degrees), number of college departments (at least eight departments), training of faculty, (members of the faculty should have at least two years of study in their respective fields in a fully organized and reorganized graduate school), number of students in classes, support, library, (college should have a live, well-distributed library of at least 12,000 volumes), and laboratories.

LANDSCAPING GIVEN BY RUDD FOR CENTENNIAL

Among Matters to Be Considered by Special Gifts Division of Centennial Committee.

MEETING SET FOR DECEMBER 7

Landscaping of the grounds about the new Student Affairs hut will become an actuality as the gift of William Lee Rudd, Burlington, N. C., to Guilford College on her centennial birthday. Announcement of Dr. Rudd's contribution to the college made recently by David H. Parsons, secretary to the Centennial committee.

Announcement was also made of a day-long business session of the Special Gift division of the Centennial committee that will be held on campus Monday, December 7. This meeting will serve to stimulate the increasing interest in and participation of individuals and classes towards the presentation of gifts to the college during the months to come.

Formal ratification of pending projects and newly-planned improvements will occupy a large portion of the sessions.

Members of the Special Gift division are: Dudley D. Carroll, '07; Herbert Petty, '08; Paul Num, '14; Robert P. Dicks, '04; Raymond Binford; Ernest Lewis, P. A. Hayes, Hugh Moore, David Blair, Alva Lindley, A. K. Moore, Robert Frazier, and Clifford Frazier.

MRS. MILNER SPEAKS AT RANDOLPH-MACON

Mrs. Clyde A. Milner, director of personnel and dean of women at Guilford, has been asked by the Delta Zeta's national organization to speak at a national meeting of the Pan Hellenic sororities, to be held at Randolph-Macon women's college. Mrs. Milner plans to speak on "Modern Educational Trends and Their Relationship to the Greek World." The time for this conference has not been definitely set as this goes to print.

Pope Announces Comprehensive

Dr. Russell Pope, head of the Guilford College French department, recently announced that the comprehensive examination in his language will be given immediately following semester examinations next January. All those who expect to graduate in June '37 must pass the examination at this time if they have not already done so.

Chapel Program

Monday, Dec. 7—"I Accept the Universe," Dr. Binford.
Tuesday, Dec. 8—Dean Jackson, Woman's College.
Wednesday, Dec. 9—Silent meeting.
Thursday, Dec. 10—Class chapel.
Friday, Dec. 11—Fine Arts club.
Monday, Dec. 14—Creative work by Guilford students.
Tuesday, Dec. 15—Guilford's Chapel, Chapel committee.
Wednesday, Dec. 16—Silent chapel.
Thursday, Dec. 17—Class chapel.
Friday, Dec. 18—Christmas carol singing.
Monday, Dec. 21—Prof. Furnas.
Tuesday (Dec. 22)—Christmas music, A Capella choir.

A CAPELLA CHOIR SINGS AT DANVILLE

Dr. Ezra H. F. Weis Plans to Feature Christmas Numbers.

FIRST CONCERT OF YEAR

The Guilford College A Capella choir will sing its concert of the year at Danville, Va., on December 8 at 8 p. m. The program, which is made up of special Christmas numbers, will be sponsored by the Danville Music Study club.

The program will be as follows:

"In Mirth and in Gladness," Nield; "Cristus Factus Est," Anero; "The Adoration," Catalan Folk music, arranged by Kurt Schindler; "Praise to the Lord," Christiansen; "From Heaven Above," Christiansen; "Song of Mary," Krantz; "Hodie Christus Natus Est," Da Palestrina; "O Praise Ye God," Tschalkowsky; "Saint Peter's Day Carol," Russian folk motif, arranged by Harvey Gaul.

THREE GUILFORD PROFS NAMED IN "WHO'S WHO"

Milners, Weis Appear in Educational Register; President, President Emeritus in General Listing.

Three members of the Guilford College faculty are listed in the 1936 edition of "Who's Who in Education," which was issued in January of this year. The three who have been thus honored are Dr. Clyde A. Milner, president of the college; Mrs. Ernestine C. Milner, director of personnel; and Dr. E. H. F. Weis, head of the music department.

Dr. Milner and Dr. Raymond Binford, president emeritus of the institution, are also listed in the general "Who's Who" which is not limited to educators in its coverage.

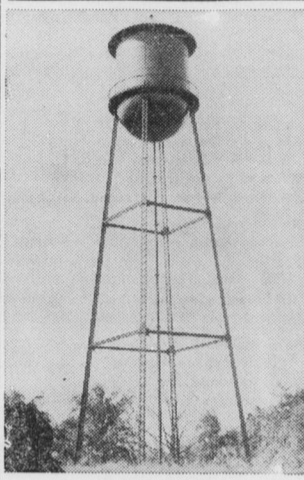
Milner, now president of the college has degrees from Wilmington College, Haverford College, and Hartford Theological Seminary; has done graduate work at the University of Chicago, Marburg University, and the University of Geneva; and came to Guilford College in 1930, where he was dean of men until 1934, when he was elevated to the higher office which he now holds.

President Emeritus Binford, who presided over the college for the 16 years previous to Dr. Milner's accession, received his B.S. from Earlham College, his M.S. from the University of Chicago, and his Ph.D. from Johns Hopkins University. He served on the Guilford faculty from 1901 until 1914 and returned in 1918 to assume the president's mantle.

DR. HARVEY A. LJUNG UNDERGOES OPERATION

Dr. Harvey A. Ljung, professor of chemistry, underwent an appendectomy operation Friday, November 28. He is reported to be recovering nicely. During his absence from school, Dr. P. M. Gennings, professor of chemistry at Greensboro College, has been teaching the chemistry classes at Guilford College.

The Water Tower



A picture of the new water tower, taken since completion, appears above.

RABBI F. L. RYPINS SPEAKS AT VESPERS

A Capella Choir and Mina Donnell Add Musical Numbers of Program.

CHORUS TO SING MESSIAH

The fourth of this year's series of Y-sponsored Vespers was held last Sunday afternoon at 4 o'clock. The speaker, Rabbi F. L. Rypins, of Greensboro, spoke on the subject of "Living a Fuller Life." The A Capella Choir sang two anthems, "Christus Factus Est," Anero, and "O Praise Ye," Tschalkowsky. Miss Mina Donnell, one of the choir's soprano soloists, sang a number adapted from the 121st Psalm, "I Will Lift Up Mine Eyes."

Other features of the program were the invocation, delivered by Reverend Milo S. Hinckle, of the Ashboro Street Friends' church in Greensboro; the benediction delivered by President Clyde A. Milner, of Guilford College; scripture readings by Miss Virginia Levering, president of the Guilford College Y. W. C. A.; and two hymns, sung by the audience in conjunction with the choir. Musical accompaniment, where required, was supplied by Mrs. Harvey A. Ljung at the piano.

The fifth of the monthly Vespers, to take place on the evening of Sunday, December 20, will be a rendition of Handel's "Messiah" which is a regular annual feature of the fall program of the Guilford College Community Chorus. This year's soloists will be Miss Edythe Schneider, professor of voice at North Carolina Woman's College, soprano; Mrs. E. C. Caldwell, of the First Presbyterian church, Greensboro, contralto; Mr. John E. Toms, of Chapel Hill, tenor; and Mr. Arthur Steere, of Winston-Salem, baritone. The North Carolina Symphony orchestra will play at the presentation.

Committee Plans Football Banquet

The social committee is now making plans for the annual football banquet which is held at the end of the football season. This year it is to be held December 12. Letters in football, cross-country, and cheer-leading will be awarded.

College Much Advanced In Liberalizing Social Life

This article taken from the November 19, 1914 GUILFORDIAN gives us some idea of the advancement that has been made in regard to student social life in the last 23 years. It is interesting to note the vast difference between the Sunday afternoons we spend now and those in the good old days.

SUNDAY AFTERNOON

Yes, it is Sunday afternoon! The boys begin putting on old shoes and sweaters preparatory to a long walk. Some few of the less energetic actually study! Others, more adventurous, veer their way toward the library either to read the Saturday papers or catch a fleeting smile from a passing fair one. Possibly if no one is looking they speak or laugh out loud (only when no one is looking).

DANCE ORCHESTRA IS ORGANIZED ON GUILFORD CAMPUS

Eight-Piece Band Uses Purely Local Talent; Fills Long-Felt Want on Campus.

TO PLAY FOR BAZAAR

Slight Admission Fee Will Be Charged at Y. W. C. A. Christmas Function to Cover Cost of Music.

An eight-piece dance orchestra on a purely local talent basis has been organized on the Guilford College campus. The band is expected to fill a long-felt want that has been irking the student body ever since two years ago when "Ducky" Frederick's organization went on the rocks through lack of money to purchase music.

The nucleus of the harmony group was the "Guilfordians"—three musically talented students that started a small "swing band" just at the close of last year as an item for the Guilfordian amateur program. Earlier this year the trio, with Annie Lee Fitzgerald vocalizing, made several broadcasts over Greensboro's station WBIG. Now, together with other interested students, they have turned their attention to the organization of a larger band on campus.

Their initial appearance is set for the Y. W. C. A. bazaar on the evening of December 19. According to present plans, some slight admission fee will be charged at that function to cover the cost of orchestration for the musicians.

Those in the band are: Saxophones, Malcolm Alexander, Howard Newkirk, and Charles Weyll; trumpets, Dick Myrose and Bill Furman; bass violin, Bill Furman; piano, Rodman Scott; and Drums, John Ketchum. Weyll, Furman and Scott were the original "Guilfordian Trio."

SPANISH-GERMAN CLUB PRESENTS NATIVITY

Production Under Direction of Miss Huth and Dr. Pope; Several New Features Introduced.

SETTING AND VERSE ARE GERMAN

Under the direction of Miss Marie L. Huth, professor of German and Spanish, and Prof. Russell Pope, head of the English department, "The Nativity" will be presented December 27. Beatrice Rohr, president of the Spanish-German club, is chairman of committee on arrangements. The "Y" organizations have had the program until last year, but the German department is in charge of this production. The setting and verse are German.

The presentation consists of eight semi-tableaux: The Annunciation, Flight into Egypt, Refusal of Entrance into the Inn, Message to the Shepherds, the Manger Scene, Advent of Three Wise Men and Shepherds.

Four unique features characterize the play: The innkeeper's wife who refuses entrance to Mary and Joseph because they are poor; the Christmas tree in the closing scene; the monk who reads in English between curtains; and singing Christmas carols at appropriate intervals.

Social Functions Should Teach Art of "Savoir Faire"

Guilford College Social Statistics

Owing to difficulties of compilation, it is possible that some of the following figures are not exactly accurate. However, The Guilfordian is satisfied that they are nearly enough correct to serve as true indications of the present stresses acting on campus social life.

Number of students living on campus: Men, 123; women, 106; total, 229.

Space available for dating couples: Average number of couples dating nightly, 32; absolute total seating capacity of four dating parlors, 56 persons. (East Parlor, which will seat 33 persons very uncomfortably, is reserved for the use of seniors.)

Percentage of students taking part in campus dances: Percentage of student body able to dance, 66 2-3 approximate; attendance at recent card dance, 35 per cent of available students; attendance at Thanksgiving tea dance, 46 per cent of available.

VARIETY NEEDED

Revival of Battleground Hike and Similar Functions Advocated.

DATING SPACE CROWDED

Recent Y. M. C. A. Stag and Open House at Bettel's Cited As Type of Entertainment Needed.

(Special to The Guilfordian)

Social education was stressed as a great campus need in a poll of student leaders recently conducted by The Guilfordian. All of those who were interviewed were asked the same question: "What, in your opinion, is Guilford's most vital social need?" In reply, a prominent woman student, whose identity we are not at liberty to divulge, stated: "The campus's great need is more socially educated students. For that reason, social functions of a type that will tend to educate the students we have in the art of 'savoir faire' are highly desirable." In the same vein was the reply made by Greig Ritchie, program chairman of the Y. M. C. A., who said: "What this campus needs is less rules; but we will not have less rules until we have a more socially-minded and mature student body."

Other Hit Space, Program

Other replies received cited inadequate dating space and the general narrowness of the college social program as undesirable factors in the existing situation. In connection with these charges, an attempt was made by The Guilfordian to compile some statistics on the social status quo; these figures appear in an adjoining column of this edition.

Among the other statements obtained were opinions from the following:

Charles Blair, president of the Men's Student Government: "Guilford College's social equipment needs general expansion very badly."

Paul Hockett, president of the Student Affairs Board: "I think the greatest problem is lack of adequate dating space. The dancing problem doesn't seem serious to me, since I myself do not dance."

Earle Maloney, chairman of the Social Committee: "More room for dating is needed."

John Bradshaw, president of the Y. M. C. A.: "The social program is at present too narrow. Too much emphasis has been placed on dancing in the past few years, and I feel that variety is the spice of social life. The recent Y. M. C. A. stag, and the open house held at Bettel's on Thanksgiving night are examples of the type of variety I favor."

Virginia Levering, president of the Y. W. C. A.: "We need more variety in our social life. I favor the revival of some of the social functions which used to be regular yearly events, like the Battleground hike."

John Perian, president of the sophomore class: "Inadequate dating space is a great defect of Guilford College social life at present."

STUDENTS READ POETRY AT FINE ARTS CLUB

Charles Sharp Reads Series of His Original Poems at Last Meeting of Creative Group.

FEATURE VOCAL AND PIANO SOLOS

Poetry as well as music was featured at the meeting of the Fine Arts club held Monday night, November 30. The program was as follows:

"How Do I Love Thee" (Sonnets from the Portuguese)—Elizabeth Browning read by Phyllis Benkenka.
"Polish Dance" (Scharwenka), piano solo by Margaret Mstrom.
"The Lark Now Leaves His Watery Nest" (Parker), vocal solo by Mina Donnell.
"Valse Romantique" (Debussy), piano solo by Betty Trotter.

Charles Sharp read a series of original poems: "The Philosopher"—several lyric poems; four poems illustrating different moods of love; "Brown Wrinkled Woman"; "Barroom Fiddler's Ballad."

The last number on the program was a vocal selection, "My Homeland" (Clara Edwards), sung by Rachel McPherson.

Y. W. C. A. HOLDS CHRISTMAS BAZAAR

Oriental Atmosphere Will Permeate; Festivities Will Be Held in Hobbs.

FRESHMEN WILL SERVE

The bazaar two weeks from tonight, the high spot of the social activities of the Y. W. C. A., will be a festive occasion. The decorations will be like those of an oriental feast day—gay colors, evergreens, and Japanese lanterns. The bazaar will be a veritable feast time for the campus, as many delicious refreshments will be sold.

There will also be on sale many unique and attractive Japanese gifts that may be used as Christmas gifts—quaint sandals, decorative trick boxes, hand-painted fibre stationery.

A special feature of the evening will be a mock marathon dance in which the couple with the lucky number will be the last on the floor and will win a cake. There will also be a pie-eating contest carried on during the evening.

Fortunes will be told and many games played, including ping pong, a variation of an old Japanese game.

WILLIAM BLAIR SPEAKS AT HISTORY CLUB MEET

Prominent Educator Makes Talk on Old Plank Roads in North Carolina at First Meeting of Group.

The History club met Wednesday evening at 7:30 in Phil Hall in Founders' to hear Mr. William A. Blair, of Winston-Salem, speak on "Old Plank Roads in North Carolina." The talk was sponsored by the club, but an invitation was extended to everyone interested.

Mr. Blair, descended from Nathan Hunt, is one of the most important educators in the state and a member of the Historical association, besides being a very prominent Quaker. His speech was enjoyed not only for its interest, but for the speaker's sense of humor which so many historical speakers' lack.

This was the first meeting of the History club this year and President Ruth Payne says that they are planning to follow it up with others which they hope will be as interesting.

MEN'S STUDENT COUNCIL ASKS FOR CO-OPERATION

The Men's Student Council is asking all firecracker enthusiasts to refrain from using fireworks until they return home at Christmas. They do not wish to have a month of fireworks on campus before Christmas for the following sensible reason: Fireworks are dangerous in the college buildings, and spoil people's rest at night.

These students are asked to cooperate in this matter as much as possible by considering others who have a right to rest and quiet.