

## Guilford Homecoming Set For Saturday

### New Improvements Add to Efficiency, Beauty of Campus

Something new has been added! You returning upperclassmen have noticed since your return to the campus this year that the new library addition has been completed, and also the remodeling of the lower floor of Memorial Hall.

This new addition to the Guilford College library contains an entry, vestibule, and foyer on each side. The foyer on the southeast side opens on a passage running east and west, from which you enter a spacious, well lighted reading room. Behind the reading room is another room that will be reserved strictly for information referring to Quakerism. At the north end of this Quaker Collection Room is a huge fireproof vault.

On the passage on the north side of the building are the librarian's office and the library secretary's office. At the end of this corridor is a large workroom.

Between the two corridors is an addition to the present reading room, the old stack, and a new three story section of stacks. On the second floor is another reading room.

From the south passage on the second floor one enters into two large seminar rooms. Situated between these seminar rooms are two small study rooms. On the north passage on the second floor are a staff room, a store room, and a music, art collection, and visual aids room.

The library as it is now is much less crowded than it was in the past. The remodeling of Memorial Hall did much to eliminate congestion during matriculation this year. In the new, more spacious offices provide for more filing space, thus for greater efficiency on the part of the administration. Another improvement which is believed will be more convenient for the student body is removal of the college post office from under Memorial Hall to the community Post Office. This alteration has also rid the college of what was generally regarded as a sore spot.

P.S. Fire escapes have been added to Mary Hobbs.

### Freshman Reception, Dance Huge Success

Guilford's Freshman Reception and dance, held on Saturday night, September 23, provided a friendly and enjoyable evening for all who were there.

After the traditional formal introduction of freshmen to the entire faculty, and the head of the social committee, students passed through a red-and-white archway into the gym itself, hung with red and white streamers and filled with soft lights and the music of Virgil West and his Orchestra.

One notable thing about this dance was that as the evening progressed, nearly everyone left the sidelines to dance; until finally, with the climax of several mixer dances, everyone there was on the floor. Another feature was the impromptu bonfire and pep rally, in which everyone participated enthusiastically, even to the cheer-leading— evening clothes and all.

### S. C. A. Membership Drive in Full Swing

Attention all you folks who like to have worthwhile good times, come to S.C.A. Affairs every Sunday night.

The S. C. A. get-togethers are for spiritual and social fellowship and fun.

Come one, Come all.



GUILFORD HOMECOMING queen and court—Roberta Burgess, queen seated in center of front row. Members of the court, first row, left to right, are Elsa Neitzke, Washington, D. C.; Miss Burgess; Betty Venable, White Plains; second row: Betsy Bingham, Asheboro; Audrey Garris, Goldsboro; Joan Brookings, Fort Lauderdale, Fla. and Mary Jane Hines, Winston-Salem.

### Roberta Burgess Will Be Queen of Homecoming Event

Roberta Burgess, winsome blonde from Greensboro, will be the Guilford College Homecoming Queen, it was announced today by THE GUILFORDIAN, the student function which sponsored the Homecoming Queen election held last Monday.

Miss Burgess won from a large field of contestants, and will receive her beauty crown during the half time proceedings of the Guilford-Emory and Henry football game Saturday, at 8 p.m.

Joining Miss Burgess as part of the Homecoming Court will be Elsa Neitzke, Joan Brookings, Betsy Bingham, Mary Jane Hines, and Audrey Garris, last year's queen.

Close to 250 alumni and friends are expected to visit the campus tomorrow and see the improvements that have been made to the college plant.

Besides the football game in Greensboro High School Stadium, the feature on-campus event will be the informal homecoming get-together from 3 p.m. to 5 p.m. in the gymnasium for all graduates and their friends. This year's special guests will be all the athletes from the 1937 to 1942 classes. Invitations have been sent to 160 Guilfordians.

Dr. Purdom said that 28 special invitations were sent to the captains of the various athletic teams which graduated during the 1937-42 period. Invitations sent include: Norman B. Bayles, Quantamo Bay, Cuba, captain of the 1938 baseball team; Wilson Byrd of Greensboro, captain of the 1938 football squad; Paul Chambers, Haverton, Penn., captain of the 1939 basketball team; Romulus Lee Graves, Gardiner, Maine, captain of the 1940 baseball team; Edgar Hurley, Jr., Asheville, captain of the 1940 basketball team.

### I. R. C. Meets

The Guilford International Relations Club is planning to hold a joint meeting with the Greensboro College I.R.C. on Thursday, October 19th in the Hut. The topic, as yet, is unannounced, but will probably deal with some phase of the Korean problem. All students are invited to the meeting.

### Guilford Enrollment Less Than in 1949

Miss Era Lasley announced that 528 students have enrolled at Guilford College for the first semester of the 114th regular session. Compared with the 562 who registered last fall this is a noticeable decrease such as most colleges have had.

The decline is less than what took place between 1948 and 1949 since the enrollment then dropped from 608 to 562 and it is according to the plan to sustain an enrollment of 500. A registration of 528 should readily do that unless the draft makes greater drains than are expected, Miss Lasley said.

The report showed that this year there are ten fewer returning students and twenty-three less new students. The decline in new students came in transfers as the figures indicate 162 new freshmen as against last year's 157.

The overall decline came in men day students. There are actually eight more girls than registered last fall, and the men's dorms are full, with three fellows in all the large rooms in Cox. Boys needn't be frightened, however, they still outnumber the girls 381 to 147.

### Charles Thomas Speaks On Christian 'Good'

Democracy depends upon the Christian concept "that man is potentially good." Charles Thomas, pastor of New Garden Friend's Meeting, told the Guilford College students last Friday, October 6 at a chapel program.

Mr. Thomas said that each man is significant in a world that is governed by the will and love of God, and that each man is made to fill a God given purpose.

"The quality of life that is created comes from an inner source... growth takes place from the inside out and may even make the seed important. So there can and does enter into man elements foreign to his nature as a child of God."

### Four Professors Added; E. Daryl Kent Returns

A music department head, an assistant professor of physical education, two instructors, and a former dean of men were added to the Guilford teaching staff during the summer.

Carl D. Baumbach, former head of the Greensboro College Music Department, was appointed to head of the music department which was weakened in 1948 with the death of Dr. Ezra Weis.

Baumbach began undergraduate study at the Kasseler Conservatory of Music, Kassel, Germany, and continued his studies at the University of Rochester Eastman School of Music, where he received his B.M. and Master of Arts degree.

While completing residence work for a Ph.D. in musicology, he served as an instructor in theory at the Eastman School of Music.

Welcomed back to the Guilford fold was E. Darryl Kent, associate professor of religion and dean of men. Kent, who joined the summer school faculty, is writing his doctor's dissertation on the "Social and Political Philosophy of Thomas Hill," British philosopher.

Miss Mary White Thompson, a graduate of Women's College, was appointed assistant professor of women's physical education. She

### Community Chest Talk Is Given by Dr. McNutt

Dr. Franklin H. McNutt, dean of the graduate school at Woman's College, told Guilford College students on October 2, that the ideas behind the community chest are local, not governmental, and "it affects all of us directly or indirectly."

Speaking on how the chest program affects present day youth, he said, "community chest organizations are interested in you. You and I for self-preservation reasons should give to the cause."

succeeds Miss Doris Hutchinson. Graduating with a B.S. in physical education in 1942, Miss Thompson continued her study at Columbia University receiving an M.A. in 1945.

Other additions to the faculty were a Guilford graduate, Elvin Stroud, who is teaching the junior history course, and Walter Arndt, formerly of Turkey and now instructor of languages. Mrs. Mathis of Guilford College was added to the library staff.

Mr. Arndt earned his degree in economics and political science from Oriel College of Oxford University.

### Quakers To Play Host to Wasps In Saturday's Homecoming Game

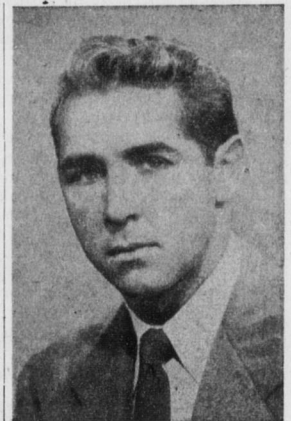
The battle of deception will take place when the Guilford Quakers battle a fast-stepping eleven from the Smoky Mountain Conference—Emory and Henry—Saturday at 8 p.m. in Greensboro High School Stadium.

Guilford will be out to repay last year's defeat, and continue their present win streak of three games. Thus far the Quakers have trounced High Point, Hampton-Sydney and Atlantic Christian. The Guilfordians lost the opener with Appalachian in Winston-Salem 22 to 2.

The Quakers, weakened by injuries to Al Johns, Joe Breedon, Ed Jones and Sam Shugart, hope to be in full strength by game time.

#### Probable Starting Lineup

Kiser	.....	LE	.....	Topping
Via	.....	LT	.....	Alexander
Harrington	.....	LG	.....	Clapp
Earp	.....	Center	.....	Gresham
Frei	.....	RG	.....	Shugart
Neblett	.....	RT	.....	Lynch
Humble	.....	RE	.....	Whitcomb
Davis	.....	QB	.....	Johns
Miller	.....	LH	.....	Venuto
Wilson	.....	RH	.....	Schopp
Spurgeon	.....	FB	.....	Tate



Pictured above is Co-captain John Schopp, who will lead the Quakers against Emory and Henry's Wasps Saturday at 8:00 P.M.