

# The Guilfordian

VOLUME XXXIX

GUILFORD COLLEGE, N. C., MARCH 10, 1953

NUMBER 6

## Barter Players To Bring 'The Virginian' Here March 13

### Choir Readies for Concerts, Tour

If, some day while you are walking to the corner you see someone holding their nose and making singing-like noises, don't be alarmed, it's just a member of the choir trying to improve their "tone quality" by the Bambauch method. The choir has been deep in rehearsal learning words and music in



CARL C. BAUMBACH

preparation for their annual spring tour which will run from March 21-30. The group presented a concert at the Emmanuel Lutheran Church on Sunday night, February 22, and are due to give two concerts on March 8, one at the Presbyterian Church in Goldsboro in the afternoon, and then a fifty-mile bus ride to Raleigh and a concert that night for the student Y.M.C.A. at N. C. State College at 8:00.

Plans for the choir tour have been changed and the choir is now planning to go to South Carolina, Georgia, and Florida, during the spring holidays instead of to Chicago and the midwest as had been planned in the early part of the year. The choir was not able to secure concerts along the originally planned route and this necessitated the change. To date the group has secured two definite concerts and there are quite a few maybes, so that it looks as though they will be successful in arranging a southern jaunt.

On Wednesday, February 25, elections for the two top offices in the choir were held. Elected president for the year 1953-54 was James Wade from High Point. Buddy is a Junior, a music major, and is now in his third year as a choir member. He was Transportation Manager for the choir during his sophomore year. Nominated for the position were, in addition to

(Continued on Page Two)

### Cox and Archdale Hold Open House

Along about Saturday, dust, feathers, and papers will emerge from Cox and Archdale. There will be a steady stream of customers buying paints at the hardware store. The occasion? Sunday is openhouse at the boys' dorms.

The owner of the hardware store told us that last year a boy phoned him at 2 a.m. and asked him to open the store. The boy wanted to buy paint. A few years ago, one of the faculty members who was touring the dorms found a lamp that had been missing from Founder's for sometime. The college knew the boys took the Founder's girls out, but they were not aware that boys took lamps out also.

In Archdale the Men's Student Government will serve refreshments.

One reminder to the unsuspecting visitor — do not open closet doors.

### Junior Class Plans Ball Game, Dance, Beauty Contest

The Junior Class agreed at a recent class meeting to sponsor some added attractions along with the student-faculty ball games this year. Planned with the ball games is a beauty contest composed of Guilford Males and a dance at the end of the game. Admission for the affair will be based on the width of the person's waist with each inch of the person adding a penny to the admission. The attraction are planned for Friday, March 20, beginning at 7:30 p. m.

As yet contestants for the beauty contest have not been lined up, but it is hoped that a large number of "Cuties" will be entered before the deadline. The outfits for the contestants will be chosen by the contestants and will range from bakine bathing suits to evening dresses.

At the end of the games between the students and the faculty a dance will be held featuring a number of name bands via records.

Proceeds made from the entertainment will be used toward the Junior-Senior banquet planned in April.

### Salkind Receives Tenn. Fellowship

Morton Salkind, who completed his work for a bachelor's degree at Guilford in January, has been awarded a \$1,500 research fellowship in chemistry at the University of Tennessee. While Morton was a student here he was on the Guilfordian staff, and president of the International Relations Club in his Junior year. He was chosen last year by the student body to be in the 1953 edition of "WHO'S WHO in American Colleges and Universities."

He will begin his graduate study this month.

### Revelers' Club to Give One-Act for Chapel

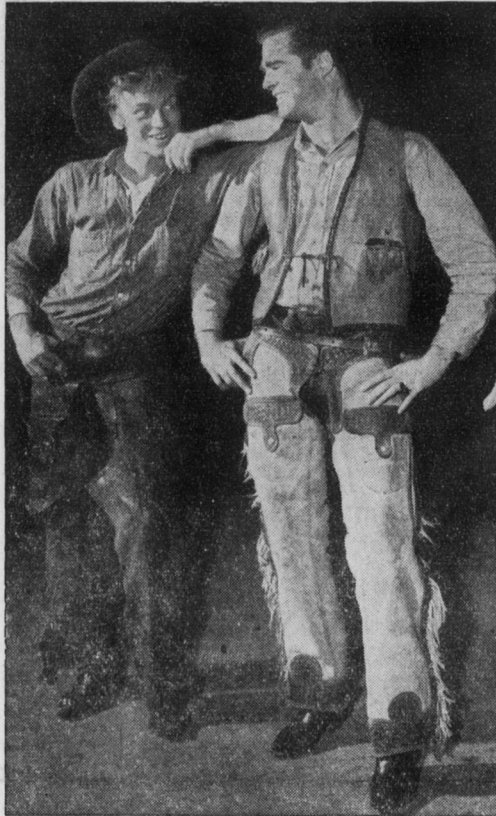
In meetings held during the week of February 21-28 the Revelers Council elected six new members to its body. Elected to the senior membership position were Kip Hale, John Church, Margaret Darrow, Marie Brewer, Marty Burton, and Bobbye James. They were moved up the hierarchal scale on the basis of the merit of their work in the Revelers Club for the past year.

Plans were laid for Revelers Club activities for the remainder of the school year. A one-act play is to be given in chapel sometime before spring vacation. It will be directed by Hugh Downing and Stage Managed by Kip Hale. To date the play has not been chosen. There was speculation in the direction of the annual spring play, to be presented in late April or early May. The Council has been busying itself with books of plays but they have not as yet given final approval to any one dramatic vehicle. Directing the spring play will be Bill Kerr of Greensboro who will be remembered for his excellent direction of "Death Takes a Holiday" on the Guilford stage in the spring of 1951.

### Aviation Officer Visits On Campus Here

On March 16, 1953, J. A. Henning, USNR, will be on campus to discuss the Naval Air Program with students of Guilford College. Anyone who is interested in talking possibilities of a Naval Air career with Mr. Henning may do so on that date. Dean of Men E. D. Kent will schedule interviews.

### "Smile When You Say That, Podner"



The Barter Theater Players will bring Owen Wister's famous "The Virginian" to life on the Guilford stage Friday night, March 13.

### Campus Commentary

by Hugh S. Downing

It is reputed that most conversations initiate themselves with a comment or two upon the weather, and, seeing as we have had plenty of it in the past week or so, ranging from balmy tennis weather to the ice and freezing rain of the past week, I thought I might submit this item from my great-grandmother's cook and remedy book which I happened to unearth from beneath a pile of old books the last time that I was home. For those of you who have been suffering from aches and pains due to the weather, I offer this:

#### Tobacco Salve for Rheumatism

Take a plug of strong tobacco, and stew it in about half a pound of lard. With this (after it is strained) anoint the part affected. It is said to give permanent relief after a few rubbings.

That's what Granny used back in 1835-40, and it was said to give permanent relief too. They didn't have cortisone or ACTH or the hormones, all they had was home-made tobacco salve.

We (this is an editorial we) walked over to upper Archdale the other day to see an acquaintance, and frankly we were rather shocked to see the state of disrepair the place is in. I questioned my acquaintance about it and he was quite free to put the blame on the administration. He claimed that Henry cleaned over there at 8:30 in the morning and that the place was messed up within two hours afterward. Now I don't know which way he was attempting to cast aspersions but it seems to me that maybe the students and the administration could get together and work out some sort of solution to this situation. Say, maybe if the building and grounds crew painted the

(Continued on Page Three)

### Porterfield Founder Of Famous Theatre

The cast for "The Virginian" which the world famous Barter Theatre of Virginia is presenting at Guilford College on March 13 at Duke Memorial Auditorium at eight o'clock in the evening is one of the largest and most distinguished ever to be toured by the inimitable theatre.

Robert Porterfield, founder and managing director of one of America's outstanding theatres, is playing the role of the soft-spoken Virginian, a part he created last summer. In addition to his innumerable duties at the theatre he is constantly in demand for lecture engagements throughout the United States and still manages to serve on the board of directors of the National Theatre Conference and the American National Theatre and Academy as well as chairman, coordinating committee, Virginia Highlands Festival.

Owen Phillips, who plays the part of a Dude, has been seen in many Warner Bros. movies and was a member of the famous Stuart Walker Repertory Theatre. For 35 years, Leo Chalzel, who plays the part of Judge Henry, has been in the theatre, appearing in every branch from vaudeville to television.

Alma Loftness, who plays the role of Molly Wood, the school teacher from Vermont, has appeared in many productions at Roanoke College, W. C., U. N. C., and the Beach Playhouse, Old Orchard, Me. Guilford students will remember her performance in the W. C. Play-Likers' production of "Harvey," in which she played the part of Myrtle May.

### Junior-Senior Committees Set

At a recent class meeting the Junior class voted to have a Junior-Senior Banquet on April 18 in the gymnasium.

The committees are as follows for the Junior-Senior: Decoration Co-chairman, Bobby James and Donald Percise. Members: Ann Ham, Joe Mathews, Don Mikles, Kay Williams, Charles Austin, Bob Callicut, Jack Andrews, Roy Clements, Gilmer Cox, Joshua Crane, Billy Ferguson, Paul Gray, Carl Jones, Auvo Kempainen, Bill Kindley, John Lacava, Francis Petty, James Leake, Bob Loftin, Paul Mooney, Reuben Payne, Marion Pringle, Larry Searce, Charles Sharpe, M. J. Southard, and Alfred Stewart, Horace Swiggett, George Velonis, Charles Wikow, and Herman Welker.

Food Co-chairmen: Betty Martin and Bob Ringwald. Members: Carolyn Hurdle, James Armstrong, Bill Charlton, Gary Hilderbrand, Alayne Owens, Nancy Herring, and Don Rockwell; Entertainment, Chairman, Anne Newton: members: Barbara Money, Bertha Hughes, Yasukeo Maekawa and Henry Browne; Invitations Chairman: Christina Gidynski. Members: Mable Benedict, Barbara Anson and Ronnie Hahn. Furniture Co-chairman: Roddie and Bill Redfean. Members: Ed Finch, Adamandio Alexiou, John Peace, Ed Lovings, Robert Cleg, and Colin Edwards;

Table Preparations Chairman: Ruth Burton. Members: Libby Venable, James Durham, Patsy Hiott, and Hazel Madden. Waiters Chairman: Janet Sumner. Members: Clyde Hawkins and Nancy Herring; Lighting and Sound Co-chairman: John Carr and Hugh Downing. Members: Donald Johnson and Chase Lassiter. Bandstand Chairman: Jim Lomax. Members: Guy Smith, James Palmer, and Don Kilpatrick. Program Chairman: Margaret Workman. Member: John Pipkin. Supplies Chairman: Marvin Owens. Members: Hassel Brown, Henry Browne, Bill Brittain, and Earl Trivette.

### Masquerade Ball Saturday Night

On Saturday night, March 14, from 8:30 until 11:30 the "Student Y" is sponsoring a Masquerade Ball in the college gymnasium. Music for the evening is to be supplied by Paul Bell's Orchestra of Greensboro. Andy Hughes is in charge of the decorating.

Following the suggestion of the title "Masquerade Ball," all who attend must be costumed. Prizes are to be awarded to the couples judged to have the best costumes.

Plans are underway for special features at intermission. The highlight of these will be the presentation of the prizes by Josh Crane.

The Ball is 'stag or drag.' Admission, however, is the same for either. The Masquerade is the first social of this type to be held on campus in some time. Put on your gayest costume, come out and enjoy an evening of dancing. See if you can recognize your friends in their special attire for the occasion.

### Young Friends To Meet March 14

The annual Young Friends Conference will be held at Guilford College again this year March 14-15.

The theme will be "The Living Message of the Bible." There will be guest speakers and lively discussion groups Saturday afternoon and evening. The program will continue Sunday with worship at New Garden Meeting.

Prior to the conference Saturday afternoon we will have Senior day Saturday. Students from all over the state will arrive Friday afternoon to get a good view of what Guilford College is like — classes and all.