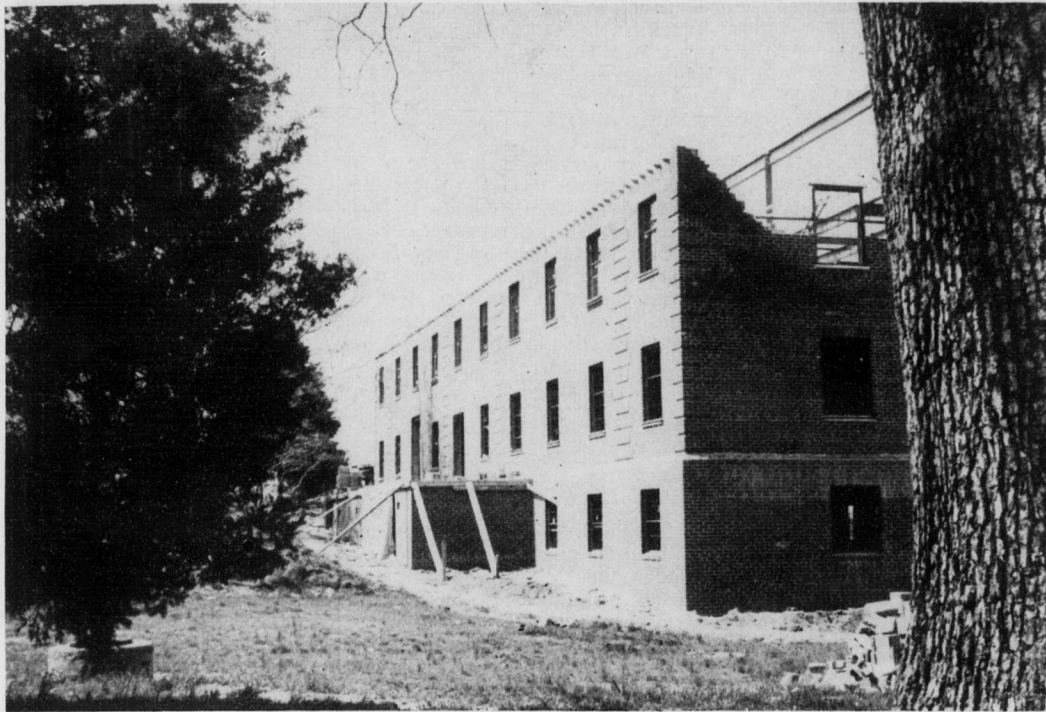


SHORE HALL CORNERSTONE LAID TODAY



KATHERINE HINE SHORE HALL

This is the stage of development of the new girls' dormitory at the time of the cornerstone laying. The day's program will begin at 10:30 this morning, with the actual cornerstone laying scheduled for 11:00. The dormitory is the gift of Mr. B. Clyde Shore of Winston-Salem.

Outline of the Day's Activities

The scheduled activities for today will begin at 10:30 a.m. when Lieutenant Governor Luther Hodges will address the assembled student body. His general theme will be "The Role of the Christian Liberal Arts College Today." The musical portion of the program will be provided by the Guilford College Choir, directed by Carl C. Baumbach. Selections will include: Prelude—*Allegro Maestoso* from the "Second Organ Sonata" by Mendelssohn; *Santus Osanna* by G. P. Da Palestrina; *Cantate Domina*, and Postlude, *March aux Flambeaux* by S. Clark.

Cornerstone Laying at 11:30

The student body, faculty, and visitors will then assemble in front of Katherine Hine Shore Hall for the laying of the cornerstone. Dr. Purdom will assist in this operation. Dr. Francis, professor of history and Biblical literature at Guilford from 1918 to 1920, will offer the dedication prayer. Trilby Tucker, president of the Women's Student Government, will present

Mrs. Clyde Shore with an orchid on behalf of the Guilford women students. Nereus C. English, Chairman of the Trustees' Promotion and Development Committee, will express the appreciation of the Trustees for this gift, and Caesar Cone II will speak for the Greensboro Advisory Board of Guilford College.

Miss Dorothy Lloyd Gilbert is the faculty representative assisting Mr. and Mrs. Shore in choosing the contents of the copper box which will be sealed in the cornerstone.

Luncheon Follows

The Mayor's invitational luncheon will follow the cornerstone laying. Mayor Frazier, Lieutenant Governor Luther H. Hodges, Mr. and Mrs. B. Clyde Shore, and President and Mrs. Clyde A. Milner will welcome the guests. Victor Murchison, pastor of the Friends' Meeting in Winston-Salem, will give the invocation at the luncheon, and Mayor Frazier will be the principal speaker.

James Wade Plans Senior Recital

James R. Wade, voice major, is planning to give his senior recital April 30 at 8:00 p.m. Better known as "Buddy," he has been very active in all musical organizations on campus. During his four years at Guilford, he has been a faithful member and leader in the choir. Serving as transportation manager during his sophomore year, Junior class representative, and president of the Choir has served to keep "Buddy" busy; yet, he participates in many other activities. He is a member of the Fine Arts Club, Student Affairs Board, and Convocations Committee.

He commutes daily from High Point, N. C., where he is Music Director and Organist at Hickory Methodist Church and a private instructor of piano. This semester, he is practice teaching at Guilford High School, where he instructs in music and band.

Besides being a soloist in the college choir, he was a featured soloist in the performance of St. Matthew's Passion given in New Garden Friends Meeting House last May. A capable leader, he is well-loved by the members of the choir for his enthusiasm, vitality, and friendliness.

E. Daryl Kent Completes Work for Doctorate

E. Daryl Kent, Dean of Men, completed all the requirements for his doctorate during Spring Vacation. He has still to make a few minor corrections in his dissertation, "Ethics of Thomas Hill Green," but all examination requirements have been successfully passed. He is to receive his degree in Philosophy from Columbia University later in the spring.

Guilford College and Evening College Share Radio Program

For the past four weeks Guilford College and the Evening Division have presented a fifteen minute radio program on station WCOG at 5:15 p.m. each Wednesday. Every other week the program is devoted to activities on the campus and other week the program was devoted to activities on the campus and alternate weeks were devoted to activities of the Evening Division. On April 7, Trilby Tucker and Pat Shields, two Guilford students, new dormitory. It is hoped that these programs will be continued next fall.

Founders Goes on Mass Diet

The most recent fad in the Dining Hall, according to "Jeep" Armstrong, the Head Waiter, is a mass conversion to diets. A fairly recent count showed somewhere around fifteen girls eating Mrs. Martin's special "diet plate." (Looks like potatoes finally caught up with us.)

SELF DENIAL is a kind of holy association with God; and by making Him your partner interests Him in all your happiness.—Boyle

Too many people itch for what they want without scratching for it.

Arts Festival

The Fine Arts Festival Association of Guilford County will hold its Third Annual Fine Arts Contest at Guilford College April 22-24. The Festival is being sponsored by the College and the Art Appreciation Club of Guilford College. Mrs. William Horney is president of this organization, and chairman of the Program Committee. Dr. Milner is the president of the Fine Arts Festival Association of Guilford College which aims to promote the work of amateur artists in Guilford County.

The entries in the contest will be displayed in the Guilford College Library April 22-25. The amateur entries will consist of paintings, water colors, camera studies, literary entries, three-dimensional art, textile design, furniture or industrial design and a religious theme in any art. Professional entries will be accepted from any field of art or music. A total of 150 pictures have been entered in the contest; ninety-six of these are oil paintings and fifty-six are camera studies.

The art will be judged on April 22 and awards will be given that night as part of the main program. The entries will remain on display in the library until the 25th of April.

Main Program

Mrs. Eric Pryce of Greensboro is the Co-ordinator of the Festival and is planning to hold the main program on Thursday evening, April 22, at 8:00 in Memorial Hall at Guilford College. The speaker for the evening will be Mr. Kermit Hunter, a distinguished member of the English Department at the University of North Carolina. He is best known for his outdoor drama, "Unto These Hills," and other similar works. Mr. Hunter is extremely interested in Dramatic Arts and has his master's degree in that field. He is very active in the current movement to revive an interest in the Arts and is encouraging the production of good art in this area.

In connection with the Festival, the Guilford College Revelers Club will give Shakespeare's play, "All's Well That Ends Well," a comedy involving the love of a lower class girl for a handsome Duke and her gain of his love. All visitors to the Festival will be welcome at this play which will be held in Memorial Hall at 8:00 p.m. on Friday, April 23, and Saturday, April 24.

Dr. Rhine to Speak Here on May 7

On Friday, May 7, Dr. Joseph Banks Rhine, professor of Psychology at Duke University since 1928, will speak at Duke Memorial Hall at eight o'clock. His topic will be "The Relation of Extra-Sensory Perception to Communism and Religion." At four o'clock that afternoon, all psychology majors will meet at the President's home for tea and an informal discussion with Dr. Rhine concerning his work.

Dr. Rhine is the author of four books: *Extra-Sensory Perception*; *New Frontiers of the Mind*; *The Reach of the Mind*; and *New World of the Mind*. He is co-author of *Extra-Sensory Perception After Sixty Years*.

Choir Makes TV Debut

Since returning from Spring tour, the choir has had a full schedule.

On Wednesday evening, April 14, at 9:30 p.m., the choir was featured on WSJS-TV, Winston-Salem, N. C. The choir sang favorite numbers including "Brazilian Psalm," "Hodie, Christus Natus Est," several spirituals, ending with "Beautiful Savior," and "The Benediction." Special features included a piano solo by Miss Nancy Lu Herring and a solo by Miss Evelyn Cline.

The choir will sing several selections for the cornerstone laying of Shore Hall this morning.

Easter Sunday, April 18, will be a busy and profitable day for the choir. They will present an Easter program at Lakeview Memorial Park, Reidsville Road, Greensboro, N. C., at 3:00 p.m. Immediately following this performance, the choir will go to Asheboro, N. C., where they will receive dinner and give a second Easter service at 7:30 p.m.

The following Sunday, April 25, will be an important day for both the choir and the college, as the choir will present the annual home concert that afternoon at 4:00 p.m. on the Guilford campus. The entire tour program will be presented at that time. The same evening at 8:00 p.m., the Winston-Salem Friends' Meeting will be host to the choir in a similar presentation.

On May 2, the choir will present Handel's Messiah at 4:00 p.m. in New Garden Friends' Meeting. The following Sunday, May 9, a tentative concert has been scheduled at the First Presbyterian Church in Monroe, N. C.

The Guilford College A Capella Choir, in combination with the Guilford College Community Chorus, will present portions of the Second and Third parts of Handel's Messiah on May 2, at 4:00 p.m., in the New Garden Friends' Meeting House. This portion comprises the Easter section of The Messiah.

Soloists for The Messiah will be Mrs. Jane Darnell, soprano; Miss Mary McIver, alto; Mr. Ray Young, tenor; and Mr. William H. Head, bass. Miss Betsy Farlow, '54, will be the organist, with Miss Nancy Lu Herring '54, assisting on the piano. The chorus will be directed by Carl C. Baumbach, director of the Guilford choir, who also directed the presentation of the Christmas portion of The Messiah.

This presentation will represent a large segment of the work which the choir has accomplished second semester.

Calendar

April 18	Choir Concerts 3:00—Memorial Park 7:30—Asheboro
April 22-24	Fine Arts Festival
April 23-24	Spring Play—"All's Well That Ends Well"
April 30	Senior Recital Buddy Wade
May 1	3:30—May Day Festivities 8:30—May Dance
May 2	4:00—Messiah— New Garden Meeting
May 4	Senior Recital Nancy Lu Herring
May 7	8:00 p.m.—Dr. J. B. Rhine, Psychology Department, Duke Univ.
May 8	Junior-Senior Banquet