

THE GUILFORDIAN

Published by the Students of the South's Only Quaker College

Volume XLII

GUILFORD COLLEGE, N. C., FEBRUARY 28, 1958

Number 9

Parking Tickets TO BE Issued

Dean Will Act As Judge

A new policy is currently being put into effect regarding student parking areas on campus. In the future, students who violate campus parking regulations will be issued parking tickets.

Tickets

Violators will receive two warning tickets which will be distributed twice daily. The third of these will require an explanation to the Dean of Men as to why the student could not abide by regulations. Action will be taken by the Dean to prevent recurrences.

Approved Parking

The approved parking areas are next to the gym, on both sides of the road behind Cox Hall, on one side of the road behind English Hall, behind Founders Hall, and the large student union parking lot.

No Parking

The circle is not to be used for student parking at any time. This area is for visitors and those having business in Memorial Hall. It is preferred that students would not park in the facilities of the New Garden Meeting House at night to prevent conflict with night meetings and Scout activities. The areas in back of the dormitories and elsewhere where no-parking signs are present are to be respected.

3 One-Act Plays Will Be Revelers' Spring Production

The Revelers Club of Guilford College will present three one-act plays as its spring production on March 13 and 14 at Memorial Hall. The three plays are "Consolation of a Painter" by Craven Mackie, a senior at Guilford, "The Monkey's Paw" written by W. W. Jacobs and dramatized by Louis N. Parker, and Synge's "Shadow in the Glen."

The production of Craven Mackie's play will be the first time that the Revelers Club has done an original play by a Guilford student. "Consolation of a Painter" is a comedy about a young man who has discovered that it is sometimes better not to win the girl. The action takes place anytime in the garden of an aristocratic house. Geoffrey, the boy involved, played by Chris Suiter, has become of great concern to his mother, Lady Hartley, played by Eileen Murry, because he has developed a rather abstract interest in intellectual problems. She can not understand why he is not satisfied with life as it is, or why he has lost all interest in his first love, Gwendolyn, played by Virginia Honea. Others in the cast are Eunice played by Sarah Jane Robinson, Roderick Earl played by John Hewlett and Lanson Lallington played by Don Lanning. Craven Mackie will assist direct this play under Donald Deagon.

The hex on a supposed good luck charm is the subject of "The Monkey's Paw." This charmed monkey's paw will grant three wishes to the first three people that own it. But no matter what the wish is it always results in bad luck for who ever makes it. The White family wishes for 2001£ to pay off a mortgage on their house. How this wish backfires is the plot of the play. Bill Campbell will assist direct this play under Mr. Deagon. Those in the cast are Craven Mackie as Mr. White, Jamie Mathews as Mrs. White, Bill Bloom as Hubert White, Larry Holland as Mr. Sampson and Bill Campbell as Sergeant-Major Morse.

Synge's "Shadow in the Glen" is a comedy about a man who pretends he is dead and watches the activities of his wife, her lover and a tramp in the days following his "death." Synge is one of Ireland's greatest playwrights and "Shadow in the Glen" sets a mood more than anything else. Those in the cast are Craven Mackie as Dan Burke, Jeanette Alder as Nora Burke his wife, Graham Allen as Michael Dara and Paul Greene as a tramp.

Bill Campbell is stage manager for all three plays, Barbara McClellan is in charge of costumes, with Mildred Henson, Sarah Jane Robinson and Cheryl McCumby working under her. Don Hemrick and Charles Benedetto are in charge of publicity, Virginia Honea is in charge of make-up and Bill Manson is heading a committee of Larry Holland and Jorden Washburn to take care of props.

The three plays will be presented at eight o'clock at Memorial Hall. Students are admitted free and tickets are 50¢ for anyone else.



Working over last minute details for Religious Education are (l. to r.) Bob Matthews, Becky Cloninger, Paul McDonald, Robin Heritage, John Juchter, Barbara Lineberger, Betty Lou McFarland, Frankie Brown, Margaret Haworth, Bob Stanger, and Jo Ann Cook.

Religious Education Week Activities Begin Sunday

Guilford will hold its annual Religious Education Week this Sunday through Saturday. The theme for the week is to be "The Challenge of Our Changing Times."

Activities will begin Sunday night with the movie, "I'd Climb the Highest Mountain," to be shown in the Student Union.

Each morning at 8:00 there will be a short "morning watch" in the hut. Various organizations on campus are to be responsible for the programs. Plenty of time will be allowed to make first period classes on time.

On Monday night Jackie Williams will lead a Song Fest in the Student Union. Co-educational "bull sessions" are planned from 9:30 until 10:30 p.m. Thursday night. These mixed groups will meet in the parlors of Hobbs, Shore, Founders, and English. Some faculty member will be in charge of leading each discussion group.

For chapels during the week, three guest speakers have been invited. Horace "Bones" McKinney, head basketball coach at Wake Forest, will speak Tuesday on "What Religious Education Week Should Mean to a Guilford College Student." Both Wednesday's and Thursday's chapels will hear Dr. William A. Wolff, professor at Bowman Gray, discuss "How Science Can Help Us Meet the Challenge of Our Changing Times." "How Religion Can Help Us Meet the Challenge of Our Changing Times," will be the theme presented Friday by

Graduate in January

Seventeen students who will receive their diplomas in June have already graduated. The following students finished work for their degrees in January, 1958: Faraq Atiyya, Kurt Rickey Conner, James T. Gamiz, Jerry Daniel Goldstein, William Sullivan Guest, Barbara Anne Jinnette Laughon, John Edwin Peters, Arib Arif Quoronfeh, James Clyde Rayborn, Richard Marvin Royal, Thi-Thanh Mai Vu, Marva Ann Bowen Wallace, Robert Glenn Wells, Raymond V. Schirmer, Agnes Sten Davis, Stephane Frisard Turner, and Sidney Villines, Jr.

McBANE, HONEA TO RUN FOR WSG PRESIDENT

The Women's Student Government at their weekly meeting nominated Carol McBane and Virginia Honea as candidates for president of the WSG for next year.

Other candidates for the WSG office will be posted as soon as those who are running have been notified.

Anyone else who wishes to run may do so by running on a petition. Five signatures of bona fide students are required. Petitions should be turned in to Bob Newton, Elections Committee Chairman of Student Affairs Board. Richard J. Crowder, Methodist minister from Pineville and former Duke basketball star.

To climax the week's activities, a Fellowship supper will be given at the New

Garden Friends Meeting House followed by a general discussion and evaluation of the week. It will be led by a panel of students and two faculty members. The supper is to be free, but anyone wishing to attend must put his name on the "sign up" sheets which will be posted.

In summing up the purpose of the week, Frankie Brown, committee chairman said, "We have tried to find out what the students want and to challenge each one of them in his personal beliefs."

White And Jordan Sweetheart Couple

Miss Mary Ellen White and her escort, Dean Jordan, both juniors, were chosen as the Sweetheart Couple at the annual Valentine Dance on Saturday night, February 15, in the gymnasium. They were chosen during the dance by a committee of faculty members, headed by Mr. Gene Key. Four couples were finalists for the title; they were: Coreen Case and Woody Finley; Martha Allen and Howard Beaton; Pinky Lapp and Dean Crenshaw. A fifth couple, Joanne Cook and Bob Marsh, were unable to attend.

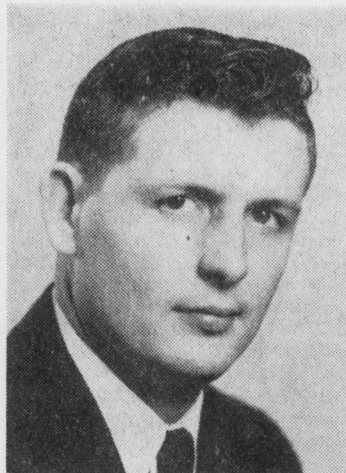
The Appalachian College Orchestra, scheduled to play for the affair, could not come because of the snow. The A & T College Band substituted.

Despite the bad weather a fairly good crowd attended the dance.

Miss And Mr. FTA



EDITH PATE



CHARLES ATKINSON

Charles Atkinson and Edith Pate have been chosen by the Future Teachers of America as "Mr. and Miss F.T.A." for 1958. The two seniors will represent Guilford College in the state student teacher's convention in Asheville in March. The student teacher's organization elects two of their members each year to represent them in the convention, and these students take with them what the F.T.A. believes to be the best

of Guilford College's ability to turn out fine teachers.

Edith is a senior education major from Goldsboro, and she did her practice-teaching last semester at Braxton-Craven Elementary School in Greensboro. She taught the first grade.

Charles is a senior hailing from Lumberton, and majoring in history. He did his practice-teaching at Greensboro Senior High School last semester.

Activities Fee Proposed Budget Gets Students' Thumbs Down Vote

75 Per Cent Vote Needed to Pass Budget

The proposed 1958-59 Student Activities Fee Budget presented to the student body for acceptance or rejection this week received a dissenting vote from students.

Of a total of 481 student ballots, which were cast in both upper class and freshman class chapel periods, 297 were marked "yes" and 184 marked "no." According to the constitution of the Student Affairs Board, the budget must pass by an affirmative vote of 75 per cent of the student body. The 297 "yes" votes represented only 61 per cent of the group.

Arts Event Planned At WCUNC

A week of concentrated art activity has been set at Woman's College beginning March 6 to feature the 17th annual Arts Festival.

Well known professionals in the fields of painting, writing, music, the dance, and drama will be festival leaders for the series of lectures, panel discussions, exhibitions, and performances.

Students and teachers from colleges and universities over a wide area have been invited to share the festival events with the Woman's College community.

Frost to Appear

The festival leaders will include Robert Frost, poet; Frederick Thurstz, Kentucky painter; Frances Gray Patton, Durham, novelist and short story writer; Doris Betts, Sanford, novelist and short story writer; Hiram Haydn, novelist and editor; Henry Rago, poet and editor of Poetry Magazine; Murray Naus, Woman's College poet and teacher; John Cage, composer and pianist; and Merce Cunningham, dancer, with his dance company.

Arrangements are being made to bring a nationally known actor to the festival to discuss the modern theater.

Highlights Given

Highlights of the festival schedule: March 6-8—Performances of Chekhov's "The Cherry Orchard," by the Theatre of Woman's College.

March 7—Opening of student exhibition of woodcuts.

March 12—Presentation and discussion of student acting scenes; discussion of modern theater by a visiting actor; opening of exhibition of contemporary American and European painting.

March 13—Art Lecture by Frederick Thurstz; art exhibition tour; criticism of student painting; music program and production-in-the-round by WC departments of Drama, Physical Education, and the School of Music.

March 14—Student choreography from (Continued on page four)

The budget was presented in both chapels by Douglas Kerr, chairman of the Budget Committee, and Jimmie Askins, president of the Student Affairs Board.

Objection

The main objection to the proposed budget appeared to be the number of students by which the total sum was calculated. Allocation of the surplus fund was also questioned. Kerr and Askins explained each of these points in detail.

Expected opposition to the \$3.00 increase in the Activity Fee failed to materialize, and the increase was not an influencing factor in defeating the budget. The budget required a raise of the Activity Fee from \$22.00 per year to \$25.00 per year.

Amendment

The following amendment to the budget was passed by the student body: "That any surplus which may arise in the future be acknowledged on the present budget and be handled according to provisions in the SAB Constitution."

Since the defeat, the budget will return to the SAB via the Budget Committee for revision. Students will vote on the new budget in chapel before spring vacation.

Biology Club To Hold Fair

The Biology Club, headed by Mack Baker, will hold its second annual Science Fair March 21 in King Hall.

Julie Trimble and Alvin Jaffee will serve as co-chairmen of the fair.

Science majors are asked to participate by contributing a project. Interested students should contact one of the co-chairmen as soon as possible.

Guilford College Religious Education Week—March 2-7, 1958

THEME: "The Challenge of Our Changing Times"

Sunday, 7:30 p.m.—Movie in the Student Union, "I'd Climb the Highest Mountain."

Monday, 8:00 a.m.—Morning Watch in the Hut (The M. S. G. and W. S. G. in charge); 9:00 p.m.—Song Fest in the Student Union (Jackie Williams, leader).

Tuesday, 8:00 a.m.—Morning Watch in the Hut (Freshman and Sophomore Classes in charge); 10:15 a.m.—Chapel Service in Memorial Hall, "What Religious Education Week Should Mean to a Guilford College Student," Horace ("Bones") McKinney, Music by the College Choir, (Baptist Group in charge).

Wednesday, 8:00 a.m.—Morning Watch in the Hut (M.A.A. and W.A.A. in charge); 10:15 a.m.—Chapel Service, "How Religion Can Help Us Meet the Challenge of Our Changing Times," Dr. William A. Wolff (Young Friends in charge).

Thursday, 8:00 a.m.—Morning Watch in the Hut (International Relations Club in charge); 10:15 a.m.—Chapel Service, Wednesday's program repeated for second group of students; 9:30-10:30 p.m.—Coeducational "Bull" Sessions, Exchange of Visits by Boys and Girls Dormitories under direction of W. S. G. and M. S. G.

Friday, 8:00 a.m.—Morning Watch in the Hut (Junior and Senior Classes in charge); 10:15 a.m.—Chapel Service, "How Religion Can Help Us Meet the Challenge of Our Changing Times," Richard J. Crowder (Wesley Foundation in charge); 6:00 p.m.—Fellowship Supper in New Garden Friends Meeting House, General Discussion and Critical Evaluation of the Week, Led by a panel of students and two faculty members.