

## QUAKERS CLIMB MOUNTAINS TO FACE WESTERN CAROLINA

Tomorrow night will find the Quakers at Cullowhee to face the Catamounts of Western Carolina in Guilford's eighth game of the current season. The kick-off time is slated for 8:00 in Memorial Stadium.

Although the Cats do not have an impressive record to show for their first nine games, they can be a tough foe. The Lenoir Rhyne Bears had to make a tremendous comeback in the final period to eke out a 36-30 win. A game with a touted Appalachian eleven found the Cats coming out on top by the

score of 32-22, which is the only win of the season for Western Carolina. In other games Western Carolina has tied Catawba 6-6, and has dropped games to Wofford, 15-29; Carson-Newman, 6-20; Tampa, 12-19; East Carolina, 7-18; Elon, 6-15; and Emory and Henry, 0-6.

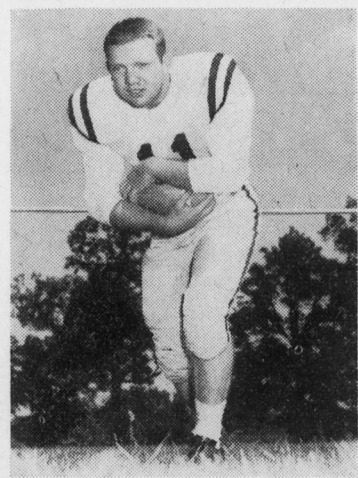
In foes that both teams have faced, the Cats come out with a better record. Both Guilford and Western Carolina have played Appalachian, Elon, Lenoir Rhyne, and Emory and Henry. In comparative scores Western Carolina comes out ahead by 20 points, but such figuring often means nothing, and this is no exception. Last year the two teams played to a 7-7 stand-off in the mud at the Guilford high school field. This was the only game the two teams have played against each other since 1946.

In checking the squad of the Cats, coached by Dan Robinson, there are but 14 lettermen. By positions there are three at end, three at tackle, one at guard, two at center, one at quarterback, three at halves, and one fullback. Of the 45 listed on the squad there are 23 freshmen, 12 sophomores, eight juniors, and two seniors. Both of the seniors are lettermen and starters. The ends boast Phil Royal, Jack Spady, and Jim Turner as monogran wearers. Royal is a 5-9, 184-pound junior, Spady is a 185-pounder and Turner weighs in at 170. Gerald Lewis, co-captain of the Cats, is the leading tackle for the Cats. Lewis is one of the seniors on the team and is a 210-pounder. Jim Pythyon is the other starter at the tackle slot. Pythyon

(Continued on page six)

## Johnny Meroney Athlete Of Week

The 1958 version of the Guilford Quakers has produced some surprises so far this season. One game the Quakers were supposed to win, they lost. They were visa versa on another one. They did as they were scheduled for one game. The Quakers have surprised the experts



by playing sound football in every game except, possibly, the Lenoir Rhyne tilt. Through the first five games the Quakers had already won twice as many games as did the 1957 Quakers. One of the big reasons for the good record so far this season is Johnny Meroney. For his performance against Hampden-Sydney and other teams this season, Meroney is the MSG Athlete of the Week No. 21.

Meroney is a 180-pound halfback in his third year at Guilford. The 5-8 speedster is from Arlington, Virginia, and is one of the four lettermen in the Guilford backfield.

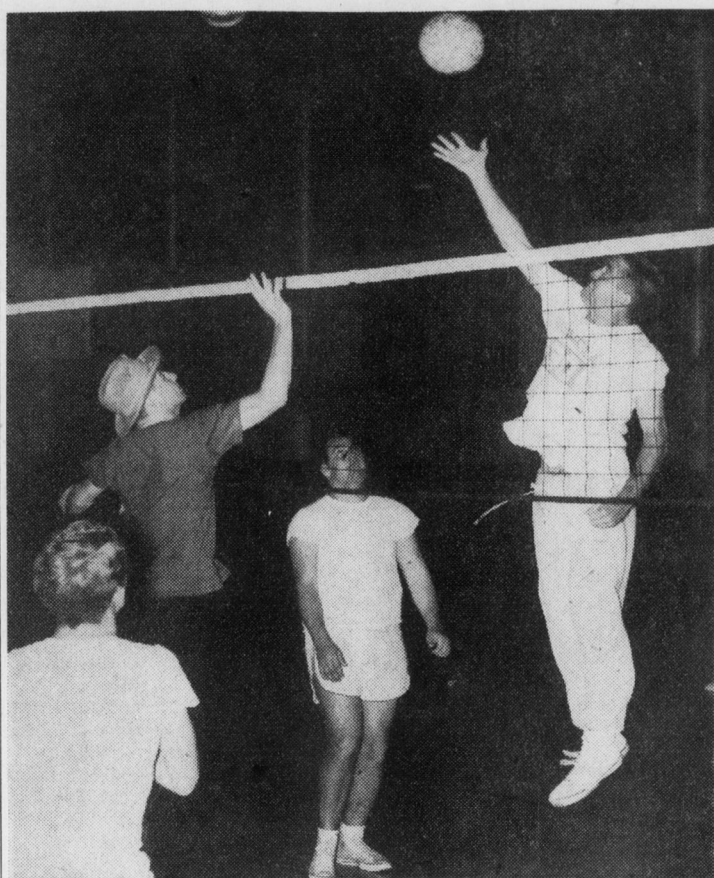
Although Meroney has crossed the last stripe for but one touchdown this year, he has been instrumental in setting up other Guilford scores thus far this year. Against Bridgewater Johnny got off on a long punt return that put the Quakers in good scoring position, and later Guilford had its second touchdown of the afternoon. When Emory and Henry invaded the campus for home-coming, Meroney again was able to move the ball in a convincing manner. Pitted against the Tigers of Hampden-Sydney, Johnny was the offensive spark for the Quakers. His running put the Quakers down deep in Tiger territory on two or three different occasions, but a fumble and a Tiger defense that became

aroused when it was pushed back against the goal halted the Quakers each time. Penalties put the skids on another Quaker threat. Meroney's only TD came against Appalachian when he plunged across from the one for Guilford's lone counter.

Johnny not only is a fine running back, he is also equally as good when the Quakers are on the defensive. Against the mighty Bears of Lenoir Rhyne, Meroney was outstanding on what defense the Quakers could muster. Playing what almost amounted to a line-backer's position against the Bears, Johnny came through with tackles that either stopped the Bears for no gain or short yardage when the plays were run to his side.

With another season left on Meroney's football career at Guilford, Johnny should blossom out even more in 1959. With his speed, weight, and determination Johnny Meroney runs the dashes in track, and is one of the backs that figure prominently in coach Herb Appenzeller's plans to put Guilford on the map in the North State.

These qualities go together to make Meroney an outstanding back for Guilford, and this issue's Athlete of the Week.



New North and Yankee Stadium battle for points in the first round of volleyball intramurals. Tommy Price (left) vies with George Hines and Jordan Washburn (right).

## CAGERS PREPARE FOR TILT WITH E.C.C. PIRATES ON NOVEMBER 29

It's almost time for basketball to take over the sports' scene at Guilford, and, according to Coach Bob Shoaf, this year's team should show an improvement over last year's record.

In three early scrimmages with Oak Ridge, Guilford has looked good, winning each time. In these scrimmages and in practice, Ted Tilghman, Don Lineberry, Charlie Clark, and John Burwell have been looking particularly good. Since these were just practice games no official scorebook was kept, but Tilghman and Lineberry have been leading the scoring for the Quakers. Tilghman, too, along with Lancaster, has been pulling down most of the rebounds. Looking very good on defense, which should be one of our strong points, are Clark and Burwell.

Bob Young, out with an injured leg, is still sorely missed. He is out indefinitely, and until he is able to play, Tilghman and Lancaster will be sharing duties at the center position.

The boys are looking forward to the first conference game November 29, when the Pirates from East Carolina invade the campus.

Compliments of  
**Guilford College  
Drug Co.**

OPEN 6:30 — SHOW AT 7:00  
**PIEDMONT**  
DRIVE-IN THEATRE  
Winston Rd. Phone BR 4-2930

— Now Showing —  
"NO TIME FOR SERGEANTS"  
— Tonite Only —  
FREE PASS  
To All Guilford Students:  
Bring This Ad and Be Admitted  
FREE

On Davie—South of Ellis Stone Parking Lot  
**Esquire Barber Shop**  
ALL HAIRCUTS \$1.00

Drive-in Booth Service  
**Ham's Sundry Store**  
Aycock, Madison & Friendly Road  
Specializing in Kosher Sandwiches  
The nicest place on your way to town or going back to school

Spacious Parking Curb Service  
**Boar & Castle**  
Greensboro's Most Popular Sandwich Shop  
W. Market St. Ext. Phone BR 3-2205

**Guilfordians**  
Take Your Trade to the  
**Piggly Wiggly**

## Collegiate Civitan Club Started at Guilford College

A 23-member collegiate Civitan Club has been formed by students at Guilford College and is sponsored by the Guilford College and Hamilton Lakes Civitan Clubs.

Tom Liverman Jr., a senior from Murfreesboro, is president of the new group. Others are Lester Parker, vice-president, a junior from Murfreesboro; Lee Andrews, secretary, a senior from Trinity; Fred Homer, treasurer, a sophomore from Merchantville, N. J., and directors, Earl N. Jones of Pilot Mt., Jordan Washburn of High Point and Steve Rundio of Egg Harbor, N. J., all seniors.

## Claudette Belton Chosen

(Continued from page one)

has also been active in the BSU for four years, serving as social chairman for the last two.

Maid of Honor Janet Andrews is a Sociology major from Goldsboro, N. C., and the daughter of Mr. and Mrs. E. E. Andrews. She was in the choir during her first two years of college, secretary of her freshman class, and a member of the WSG council her freshman year. She worked on the Quaker for three years and she has been typist for the GUILFORDIAN since last year, serving as head typist this year. She has been in the Young Friends group for three years. Janet reigned as Queen over all the homecoming festivities this year.

Other girls on the May Day Court are Coreen Case, Becky Blackwell, Gertie Murrow, Mary Ruth Shropshire, Jo Ann Hundley, Louise Beasley, Pat Estes, and Janet Smith.

Headquarters for College Car Problems

**SMYRE'S**  
TEXACO  
Station

ACROSS FROM HAM'S

Headquarters for Men and Young Mens Clothing

**HALL-PUTNAM**  
Clothing Company

"Complete Outfitters"

The perfect place to select your Christmas gifts

## College Cleaners

Guilford College  
Phone 2311  
DICK PLEASANTS

**CINEMA**  
THEATRE

FRI.-SAT.-SUN.-MON.  
NOV. 21-22-23-24

The brand new adventures of Ronald Searle's hilarious, barbaric British schoolgirls!

"Blue Murder at St. Trinian's"

With Alastair Sim

Also Academy Short  
"THE RED BALLOON"

Special reduced prices to college and high school students upon presentation of ID card or other credentials



Best looking  
**SWEATER SHIRTS**  
in town!

In Ivy stripes: brown, blue, grey and maroon. 75% Wool—25% Orlon

**\$8.95**

Ideal Christmas Gift

**Johnson & Aulbert**

120 N. Elm St.