



### The Haunting Story of Halloween

Among all the festivals which we celebrate today, few have histories stranger than that of Halloween. The festivities go back at least 2,000 years. The last day of the year on the old pagan calendar, October 31, served the triple purpose of bidding good-bye to summer, welcoming winter and remembering the dead.

Superstition is the main basis of Halloween. The earliest Halloween celebration stem from the Druids. They believed that Samhain, god of the dead, sat waiting by the fire to catch the approaching soul and turn them into animal forms. Wickedest of the ghosts were metamorphosed into cats — which is how the black feline entered the Halloween picture. The bat is often thought of in connection with evil. Both witches and bats are supposed to work at night and disappear at night. In the Middle Ages the bat was thought to be in partnership with the devil and with witches. There are also many legends and superstitions connected with the owl.

Why do people cut out pumpkins and place lighted candles inside? It is an Irish tradition. The name "jack-o-lantern" comes from the Irish tale of a man called Jack. He was too wicked for heaven and was expelled from hell for playing practical jokes on the devil. For his punishment he was condemned to walk the earth with a lantern forevermore.

Surprisingly, Halloween was scarcely observed in the United

States till the last half of the 19th century. It's thought that the large-scale Irish migration at that time had much to do with popularizing the holiday.

Halloween pranks are of very ancient origin. For centuries, overwrought celebrants used to carry away their neighbors' gates and plows, and pelt their houses with vegetables. Just so the stay-at-homes would know it hadn't all been a bad dream — stop up the chimney so no smoke could escape. It was the grown-ups, too, who initiated the "trick or treat" system hundreds of years ago. Today the practice of "trick or treat" is done by the children. The practice is for gangs of children in each neighborhood to dress in various costumes with masks. Then they go from house to house ringing doorbells and shouting "trick or treat!"

Whatever the origin of "trick or treat," the wise householder will make sure that he or she has a fairly large supply of apples, candies, or such on hand — because if he does not, he is likely to find soap all over his car windows or his yard furniture hidden in various places the next morning.

Even though you do not believe in ghosts, spirits, spooks, would you dare to walk through a graveyard alone on Halloween night?

### Fellowships

(Continued from page one)

Professor Richard Bardolph, Woman's College of the University of North Carolina, Box 5095, Greensboro, North Carolina, who is the Regional Chairman.

The deadline for receiving nominations for the 1960 Fellowships is October 31, 1959. Application blanks will be mailed directly to the student on receipt of a faculty nomination.

## TEN GIRLS ARE NOMINATED FOR 1959 HOMECOMING COURT

Ten girls have been nominated as candidates for the Homecoming Court this year. They are sponsored by various campus organizations, and range from freshmen to seniors. Elections for the Homecoming Court and Queen will be held in freshmen and upperclassmen chapels next Wednesday and Thursday, October 28, and 29.

The Cheerleaders are sponsoring Cleve Wood. Cleve is a senior education major from Winston-Salem, N. C. She is a member of the 1960 May Court.

The Choir's candidate is Merle Mallard, who is a music major from Wallace, N. C., and a sophomore this year.

The *Guilfordian* is sponsoring Miriam Almaguer, a math major from Miami, Fla. Miriam is president of the junior class and also president of the I.R.C.

The International Relations Club nominated Lucy Garcia. Lucy is a chemistry major from Cuba, and is a sophomore.

The Men's Student Government is sponsoring Caroline Primm, from Snow Camp, N. C. Caroline is an education major, and is a senior member of the 1959 May Court.

The Women's Student Government's candidate is Sara Jane Robertson. Sara Jane is an English major from White Plains, and is also a senior member of the May Court.

The Monogram Club nominated Carol Triplett. Carol is the only freshman sponsored for the Court.

The Reveler's Club is sponsoring Cathy Coble. Cathy is a junior English major from Liberty.

The Social Committee put up Betty Lou McFarland. Betty Lou is an education major from Aberdeen. She is a junior.

The Women's Athletic Association is sponsoring Betsy Winsett. Betsy is a sophomore from Pinnacle and is majoring in

### Intramurals

(Continued from page three)

**TOMMY KEMP — ARCHDALE** — "Lack of height is our biggest problem, but we try to overcome that lack with speed. The new rules should help us some as well as everyone else. Now there should be a more skillful game and these close ones won't be decided by one lucky break or catch."

**RAYMOND SHARPE — ENGLISH** — "We have a good group of promising freshmen and if they come through for us we will have as good a chance as anyone. The new first down rule will help us considerably since our strength has been in the short pass range. The blocking rules are adequate enough to minimize accidents."

**JOHNNY SHIELDS — FERTILE FLATS** — "We are pleased with our work so far and we are glad to see the new rule on first downs. The next half of the season should be much more interesting to play and watch than the first half. We should finish close to the top if all goes well."

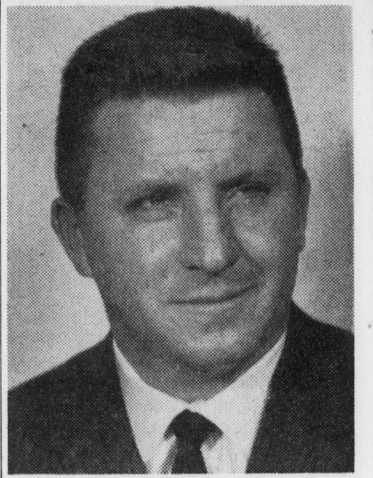
This concludes our little session. I would like to close with a reminder concerning intramural horseshoes and some advice on sportsmanship. Sign up with your dorm manager for horseshoes and don't give the referee so much "head." That is atrocious English, but so is some of ours! Be more Careful!

### Young Friends To Arrive

A chartered bus will bring 39 Young Friends from New Jersey and Pennsylvania to Guilford College. They will arrive in time for breakfast at Founder's Hall tomorrow morning. They are part of the Young Friends Intervisitation Program, and Guilford will accommodate them overnight, and contribute their meals and travel expenses for the two days they are here.

The groups will include Young Friends from 23 different meetings, and they will be wandering over the campus all Saturday morning, to talk to both faculty and students informally. A "Quaker tour" is planned for tomorrow morning, including Greensboro, Springfield, where they will visit the Quaker Museum, and High Point.

They will leave for home at 8:15 Monday morning.



HERB APPENZELLER

### Meet The Coach

Last year, before Guilford's football game with Catawba College, Coach Herb Appenzeller began planning a new offense for the coming games of the season . . . and he called this new attack the "flying wing." The name "flying wing" was derived from the fact that a man in the backfield is in motion during the play.

This year, the main offense of the Quaker team has centered around this new and effective "flying wing," and it has already paid off with two wins, before the season is half over.

Since the Quakers seem to have a well-balanced line this season, Coach Appenzeller seems to think that this is one of the strongest points of the entire team. "As for the backfield, the running is at its best and the Quakers are passing more than before and completing better than 50 per cent," said Appenzeller.

Before Coach Appenzeller came to Guilford, he had made quite a name for himself in several other places. Born in Newark, N. J., he graduated from Weequahie High School. Then he decided to come south, and spent his college years at Wake Forest, here in North Carolina. After his college years, Appenzeller went on to coach at Robesville High School for two years, and then spent the same amount of time at Wakelon High School.

From Wakelon, he went to Chowan Junior College, where he remained for five years. In the year 1956, Coach Appenzeller began his career as Guilford football coach.

As proof of his local popularity and respect, he was just recently chosen alternate faculty advisor for the Honor Board, and is also sponsor of the Westminster fellowship. This is not entirely new to him, for he served as Chairman of the Counseling Committee at Chowan College, and was also a member of the student government at Wake Forest during his school years.

After watching the squabbles that often develop in the splitting of estates, we can sympathize with the old fellow whose will contained just the following: "Being of sound mind, I spent every blame cent I had!"

### First Semester Honor Roll Students Are Announced

The Honor Roll for the first semester of the 1959-1960 school year has been announced by the Registrar's office. The twenty-two students earning a 2.50 or above average are as follows (with quality average in parentheses): Miriam Almaguer (2.52), Edward Vincent Bannigan (2.56), Lawrence Leonard Bilek (2.60), James Neal Butcher (3.00), Jane Helen Carroll (2.78), James Franklin Childress (2.55), Betty Lou Chilton (2.64), Jesse Thomas Copeland, Jr. (2.62), Nancy Edith Dawson (2.80), Stanley Roderick Deans (2.67), Patricia Lee Garner (3.00), Howard Thomas Hinshaw (2.58), Jerry Thomas Jennings (2.52), Thomas Lorenzo O'Briant (3.00), George Robert Parish (2.60), Maurice Terrell Raiford (2.62), Andrea Toni Rogin (2.56), Ira Nahum Ross (2.80), Dora Anderson Smith (2.73), Ann Dean Stratton (2.66), Anne Marie Taylor (2.58), and Mary Mozelle Wheeler (2.50).

A Motion Picture As Proud and Violent As Tom Lea's Powerful Novel

ROBERT MITCHUM

JULIE LONDON in

"THE WONDERFUL COUNTRY"

In Technicolor

Starts SUNDAY

CENTER THEATRE — GREENSBORO

### Ellis Stone

Greensboro's prestige

department store

dedicated to

fine quality and

sincere service

(A Thalheimer Affiliate)

Spacious Parking Curb Service

### Boar & Castle

Greensboro's Most Popular Sandwich Shop

W. Market St. Ext. Phone BR 3-2205

Drive-in BR 3-5658

### Ham's Sundry Store

Aycock, Madison & Friendly Road

Specializing in Kosher Sandwiches

The nicest place on your way to town or going back to school

### IVY LEAGUE

- Sportcoats
- Sweaters
- Shirts
- Slacks

**Vanstory**  
CLOTHING COMPANY  
JEFFERSON STANDARD BUILDING



### Guilford Dairy

Milk makes Energy

visit your nearby GUILFORD DAIRY BAR

Specializing in

### Traditional Clothing . . .

Clothing and Sportswear for Young Men and Women

— Second Floor Shop —

**Younts-DeBoe**  
Company  
106 North Elm St