

# QUAKERS AT 6-2

## The Guilfordian

Published by the Students of the South's Only Quaker College

VOLUME XLVIII

Greensboro, N. C., December 19, 1963

NUMBER 5

### Sixteen Guilford Seniors Selected For Who's Who Among Students

The following sixteen seniors have been selected by the senior class and the faculty to represent Guilford College in the annual edition of Who's Who Among Students in American Colleges and Universities, for 1964.

(1) Nancy Jo Angotti, a psychology major from East Orange, New Jersey.

(2) John Crooks Bailey III, a physical education major, from Davidson, N. C.

(3) Joseph Patrick Bledsoe, an economics major, from Winston-Salem, N. C.

(4) Sandra Lillian Brown, a physics major, from Unionville, Connecticut.

(5) Lois Ethel Chase, a mathematics major, from Lynn, Massachusetts.

(6) Robert O'neil Davidson, an economics major, from Statesville, N. C.

(7) Leah Maie Harris, an elementary education major, from High Point, N. C.

(8) Nancy Lee Judd, a history major, from Asheboro, N. C.

(9) Daniel Franklin Kuzma, a mathematics major, from Matawan, New Jersey.

(10) Patrick William Larracey, a religion major, from Keene, New Hampshire.

(11) David Ralph Miller, an economics major, from Salem, New Jersey.

(12) Elwood Gilliam Parker, a mathematics major, from George, N. C.

(13) William E. Seabrook, an English major, from Greensboro, N. C.

(14) Jane Walker Simpson, a sociology major, from Charlotte, N. C.

(15) Phyllis Jeanine Voss, a psychology major, from Laurinburg, N. C.

(16) Virginia Woodhull White, a sociology major, from Cumberland, Rhode Island.



1—Angotti



2—Bailey



3—Bledsoe



4—Brown



5—Chase



6—Davidson



7—Harris



8—Judd



9—Kuzma



10—Larracey



11—Miller



12—Parker



13—Seabrook



14—Simpson



15—Voss



16—White

### "The Messiah" Aired

On Sunday, December 15, 1963, at 4:00 p.m. in Dana Auditorium, The Guilford College Community Chorus and The Guilford College Orchestra presented the 8th annual production of selections from Handel's Oratorio *The Messiah*.

The Chorus was directed by Carl C. Baumbach and the orchestra by Sheldon Morgenstern. Claude Cook was the organist.

The soloists for the performance were Grace Kilkelly, soprano; Polly Medearis, alto; Jerry Smyre, tenor; and William Head, baritone.

### GC Faculty Dinner

The faculty and administrators of Guilford College were entertained with a banquet in the school cafeteria, Monday night, December 9, 1963.

Mr. Charles Hendricks presided over the evening's program with some opening comments and the introduction of the faculty speakers for the evening.

The speakers, Dr. E. Garness Purdom, Miss Mildred Marlette, and Dr. Algie Newlin, each humorously and uniquely discussed his personal experiences here on the campus.

### First Hootenanny Termed A Success

On Friday, December 6th, the Social Committee sponsored a Hootenanny in the basement of Founder's Hall. The audience sat on the floor before the performers and occasionally joined in to sing along with the artists.

The group featured that evening was the Early Time Singers, a local trio composed of Bookie Binkley, Ike Wrenn, and Randy Thrift. Other performers included Nancy Steele, Jerry Simmons, and Barbara Hagy. Guilford also discovered a hidden talent at the Hootenanny, who is none other than John (Salty Dog) Bailey. John persuaded the Early Time Singers to switch from folk songs to country music so that he might display his ability as a banjo-picker.

The Hootenanny provided several types of music including not only older folk songs, but also country and Western songs, more

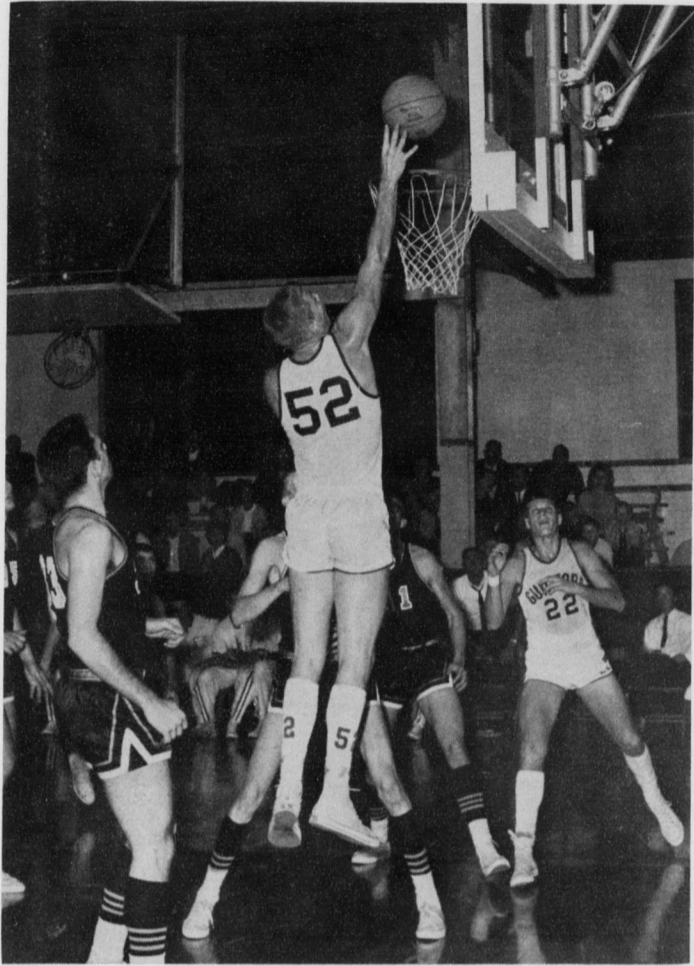
(Continued on page 4, column 1)

### Peace Corps Aims Clarified in Chapel By Dr. S. D. Proctor

Guilford College students heard Dr. Samuel D. Proctor, President of A&T College speak during convocation on Friday, December 6, about his work with the Peace Corps.

Dr. Proctor, who for eighteen months was the associate director of the Peace Corps, visiting Nigeria to coordinate the activities of the Corps there. He explained the way in which the Corps tries to give foreign countries a true perspective of the United States. He said he found it very difficult to explain the inaction of the United States in the riots in places like Birmingham to the African natives.

Basing his beliefs on these experiences, he extolled the virtues of the Corps and refuted the statement that the Corps was not worth its expense. He emphasized the fact that the greatest value of the Peace Corps lies in its "personal contact element." He said that the fact that a foreigner gets to know an American as a real person rather than just a picture or a tourist is the true value of the Corps. Finally, he said that the establishment of the Peace Corps is a "point of no return" in our international relations.



Charlie Black (52) combines with Dan Kuzma (22) for an easy two points. These two boys have been making life very difficult for the opposition. Although there is a height disadvantage, Black and Kuzma make up for it with muscle and hustle.

### Guilford College Bowl Team Wins Victory at High Point

The newly organized Guilford College Bowl team met with High Point College, Wednesday night, December 8, at High Point College. This was the first official meet scheduled between the two schools.

The meet was organized and carried out through the North State Student Government Association which has been working on the College Bowl program for almost a year. The member colleges of the N.S.S.G.A., of which Guilford is an active member, are scheduled to meet one another through the course of the year in competition which will eliminate the losers of a series of matches and finally produce a winner of the elimination.

The Guilford College team was picked over a period of three weeks during which there was first, an open competition enabling all interested students to compete for selection among the "top ten." After this preliminary elimination, the ten who were chosen participated in two coaching sessions, one held by Mrs. Milner, the other by Dr. Burrows. The purpose of these sessions was to enable the professors involved to pick the four regular team members and the two alternates whom they thought would answer the questions in the best manner. The criteria for selection were correctness in answering, speed in responding, and display of nervous emotion. Time hampered the extended selection proposed and the team was selected after only two of the proposed coaching sessions.

The Guilford team won the first official match with High Point with an impressive 130-point difference. The team members who participated in this first match were, Rusty Edmunston, Gordon Compton, Ted Buddine, and Dave Parsons. The team selected for competition is as follows: Dave Parsons,

Ted Buddine, Gordon Compton and Karen Baldwin (regular members); Rusty Edmunston and John Frysinger (alternate members).

The procedure used in the matches held by the N.S.S.G.A. much resembles that used on the televised G.E. College Bowl program. The moderator asks toss-up questions compiled by the coordinator of the program and submitted by professors from all the participating colleges. Both teams are allowed to try to answer these questions. The team whose member first signifies that he wishes to answer the question is allowed a response. If that response is deemed incorrect by the moderator, the members of the other team are allowed to signify their desire to answer the question. A bonus question, usually consisting of several parts that are individually weighted according to difficulty, is then awarded to the team which correctly answers any toss-up question. A ten-second time limit is allowed for the members of any team on either type of question to begin to answer. The match is divided into two twenty-minute questioning periods with a ten-minute intermission between each session. There are two attendants for the light panel, one from each school. Two people keeping the time on the questions are provided, one from each school. The scorekeepers are provided from each school. A moderator is selected from each school and the school hosting the match provides its own moderator for the evening. The questions for each match are requested and sent out from the central coordinator for the program. Two matches are scheduled for each set of two schools. The team with the highest total number of points at the end of both matches goes on to meet another school for another set of matches and the losing team is eliminated.