

Guilfordian

September 21, 1976

Burris to Give Dr. Vicky's Memorial Concert

BY DAVE OWENS

A lieder recital will be presented at 4 p.m. Sunday, Sept. 26, in Sternberger Auditorium at Guilford College to honor the life and memory of Dr. J. Curt Victorius, professor of economics at Guilford College from 1940 until 1964.

The program of German songs will be performed by Greensboro soprano Marilyn Burris and pianist Wilton Mason, professor of music at the University of North Carolina at Chapel Hill. The public is invited free of charge.

Ms. Burris, accompanied by Dr. Mason, will perform songs of Ludwig von Beethoven, Franz Schubert, Robert Schumann, Hugo Wolf and Richard Strauss.

Ms. Burris' major oratorio roles are from "Messiah," "Creation," "Elijah," Bach's "Magnificat," Schubert's "Mass in G," Brahms' "Requiem" and Saint-Saens' "Christmas Oratorio."

Formerly a teacher of voice at Guilford College, Greensboro College and UNC-Chapel Hill, Ms. Burris now has a private voice studio in Greensboro.

The late Curt Victorius was born to wealthy Jewish parents in 1895 in Graudenz, Germany. He was not raised in the Jewish faith, but was nurtured in a non-sectarian milieu that stressed educational, musical and humanitarian values. From his earliest days he studied music and became an accomplished cellist while still very young.

With the rise of anti-Semitism in the 1930's he joined the confessional church and spoke out against the increase of intolerance in Germany. In 1938 he was forced out of his position and escaped to the United States.

Dr. and Mrs. Victorius became active members of New Garden Friends Meeting, where they were often heard speaking against the kind of intolerance and racism which drove

them from their native land.

A man of many talents and accomplishments, Dr. Victorius also was known as a person of energy, discipline, and strong opinions. He is described as a man who loved his family, his adopted country and the ideas of truth and honor on which his life was built.

"Dr. Vicky" loved beautiful music, particularly the great music of the land in which he was born.

Once, after hearing Marilyn Burris sing a group of German lieder on a recital at Guilford College, he embraced her and said, in his still heavily-accented English, "Marilyn, you are a born lieder singer."

Ms. Burris replied, "Then I shall sing a lieder recital just for you."

The Sept. 26 recital is to be given in appreciation for the musical contributions of Curt Victorius to the Greensboro Community.



Dr. Victorius in 1945 when the "Quaker" was dedicated to "Dr. Vicky".

Senate Activities Get Underway

BY MARK SEIBER

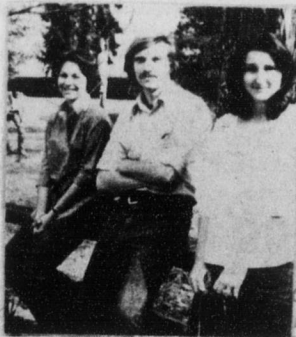
The 1976-77 Community Senate is off to an energetic start on what promises to be a productive year. Under the leadership of John Janney (CS President), Ellen Pollock (VP), and Amie Williams (Secretary), elections have been held; the senators have "taken office"; and meetings are underway.

The Senate is the forum through which the Guilford community — students, faculty, and administration alike — comes together in making decisions and policies for the welfare of the college.

The senators have several basic duties: to attend weekly meetings and to represent their constituents in voting, voicing

concerns, and raising questions. Since the senators are indeed representatives, they should be made use of. The Community Senate is more or less stifled without input by all members of the Guilford College community. Don't hesitate to participate! All meetings are open to the public. They are held each Wednesday evening at 7:30 in the conference room, on the second floor of Founders Hall.

At this point in the year, Senate activities revolve, primarily, around the selection and election of students to various campus-wide committees. These committees, such as the Athletic, Dana Scholarship, Food, Admissions,



and Curriculum committees, cannot function representatively without the suggestions and work of both the faculty and students. Details on these and other student-faculty committees can be obtained from the senators or from the Community Senate office in Founders.

If you have any questions concerning Senate activities or would like to voice a particular concern, contact your senator. The senators for the 1976-77 year are:

LEFT to RIGHT:
ELLEN POLLOCK
JOHN JANNEY
AMIE WILLIAMS

HEY YOU

Fire in Bryan

A minor fire disturbed the early Sunday morning calm in Bryan Hall this past week-end. Caused by a popcorn popper in Suite D31, the 6 a.m. fire was extinguished with the help of Rob Martin, off-duty campus security guard.

Although the Fire Department came, most of the damage to a desk and books was already done and the fire out. The firemen set up fans to draw out the smoke and departed, leaving Bryan still standing for another exciting week-end.

The Guilfordian welcomes anybody and everybody who wants to contribute their time, energy, and, of course, their writing. Our work schedule is below. All meetings are in the Publications Suite, Founders 208.

Tuesday night, 6:30-7:00 p.m.

If you have an idea you want to write about or want to write but can't come up with an idea, come at this time and we'll help you out.

Sunday night, 6:30 p.m.

Deadline for all articles. Proofreading, headlines; captions, etc.

Monday night, 6:30 p.m.

Lay-out! (With munchies)