

Marlette  
interview  
See p. 4

# GUILFORDIAN

Vol. LXIII No. 7

Guilford College, Greensboro, N.C. 27410

January 30, 1979

## Overcrowding diminishes

By BETH EAKES

In a recent interview with Bob White, Director of Housing, the current on-campus housing situation was discussed. White does not consider Guilford to be overcrowded at this point.

For Guilford College, 850 students is the optimum population of on-campus residents. During the 1978-79 year, the housing department has made this amount of space available, eliminating any overcrowding problem.

As of Tuesday, January 30, enough dormitory space has been made available to warrant moving the students out of Frazier Apartments #12 and #18, and into dormitory rooms. No students who applied for dormitory space remain in Frazier.

Most of the problems centered not on the unavailability of space, but rather on the imbalance in housing requests. The amount of requests for Shore and English dormitories far exceeded the availability of spaces. The popularity of Shore and English seems to be due to the size.

Bob White explained that the ideal size of a residence hall is approximately fifty students. This size has been shown to be ideal for personality development, for meeting people and for developing a sense of community within the student.

Guilford College offers a wide variety of housing situations. The choice includes two cooperative residences (Mary Hobbs and George White Halls), two common college dormitory residences (Binford and Milner Dormitories), and two smaller dormitories which have already been mentioned.

Bryan Dorm offers co-ed housing and the French House offers women students the opportunity to directly apply their studies in French. Two other housing situations include the Bryan Annex and Dana House #2, where men and women, respectively, have the opportunity to live in close fellowship, not possible in the larger dormitories.

For students living on campus, it is very important to be aware of the way in which the housing office operates. Students who are dissatisfied with their housing situation should contact their intern and,

if necessary, see Bob White.

An open and responsive attitude can be found in Bob White's office, as he reflects Guilford's concern in dealing with the individual student.

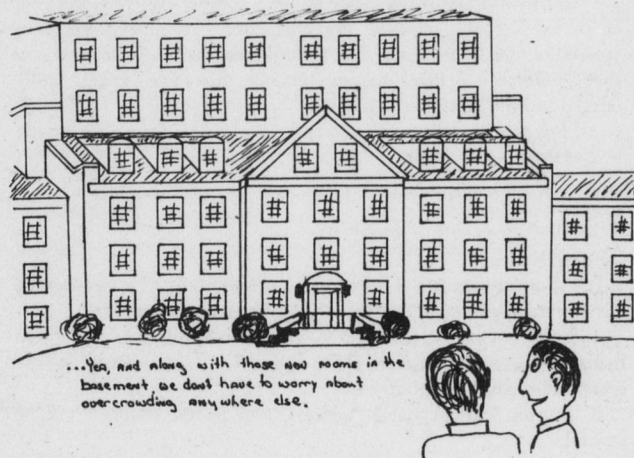
A perennial problem has been the varying proportion of men to women on the campus. A fluctuation usually occurs every year, and creates a hectic problem that has formerly been solved by temporarily housing the students in Frazier Apartments, or using another spur-of-the-moment tactic.

One solution to this problem will be the creation of "flexible swing space" in two suites in Bryan, B-21 and B-22. These would be

used to house an excess of either men or women.

One peculiar problem that occurred this year concerned the number of students who transferred from Guilford. Almost every student who applied and was accepted to the college decided to study at Guilford, and only a small percentage of those that arrived decided to leave.

This created problems for the housing department, but this type of problem is the happiest one that could be expected. The fact that we have many more students who wish to remain at Guilford reflects well on the college, whether it is a tight fit or not.



## New rooms in Milner part of housing plan

By BRIAN CAREY

In response to an increase in on-campus students, new rooms have been opened in the basement of Milner Dormitory. Using the existing two study rooms, which were formerly used as security offices, as a starting point, a six room hall was created at the northern end of the basement.

as an essential part of Guilford's entire housing plan. Their construction enabled the housing office to move the remaining students out of Frazier apartments, allowing the apartments to revert to their original status as housing for married couples.

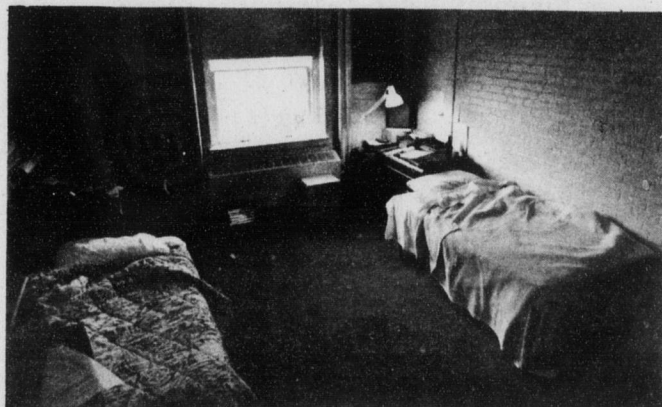
These new rooms also offer

another opportunity for a quiet hall in Milner, since their location in the basement eliminates most of the noise. The basement hall would join 3rd North as the only two quiet halls in Milner.

The rooms do not follow the typical floor plan of other rooms in Milner, and tend to appear bigger than the other rooms. Equipped with movable furniture and heating

units, each room has an individual window and wall-to-wall carpeting.

A lowered ceiling creates a more comfortable atmosphere and, combined with the carpeting, makes a room in the basement one of the most desirable situations on campus. Stated White "If I were joining Guilford for the first time, I'd certainly request one of the new rooms in Milner."



An inside view of a new basement room just completed in Milner Dorm.  
Photo by Steve Lowe

## DEADLINE

The *Guilfordian's* weekly deadline is midnight on **Wednesdays**.

All articles should be typed, double spaced.

Please place articles in the envelope on the *Guilfordian* office floor,

Founders or give them to any staff member.

We reserve the right to edit all copy. Late articles will be run in the next edition unless arrangements are made in advance.

## 'People music' Williams specialty

By MIKE WILLIAMS  
and  
SUZETTE HOLBROOK

Part redneck, part entertainer, and part kid, Mike Williams draws from a broad repertoire when his "Booming, bass-baritone" accompanies his twelve string guitar creating a musical microcosm of human experience.

Williams will be appearing in concert on campus, Feb. 9 and has played previously here at Guilford.

"People music" is Mike's specialty. He describes it as such; "People music is something like folk music . . . also like country music. Easy to listen to, and full of stories about good ol' folks like you and me."

An experienced performer, Williams has entertained at coffee houses, miniconcerts and has served as an opening act in concerts featuring Jimmy Buffet, Tim Weisberg, Nitty Gritty Dirt Band and Steve Martin.

With two albums behind him made up entirely of original compositions Williams has proven his ability to compose music as well as perform.

If an evening of rollicking, down-home, foot-stamping fun sounds appealing, come on out on Feb. 9 and lend an ear to Mike Williams.

"I've seen a lot of beautiful, amazing, funny goings-on," Williams himself commented. "The stuff in these songs is pieces of what's happening in Your life, so you'll feel right at home with them."