

# Nuke the groundhogs!

By Brian Wiprud

Cute little furry animal, right? Ha! He sits on his haunches devouring one of your celery stalks and you think he is cute. Well, for your information, groundhogs sit around all day eating.

What's more, in a single sitting those chubby cuddlies consume a pound of vegetation; that's the equivalent of a 150 pound man eating a 15 pound steak. Hog is right! But here is the clincher.

As human population growth rates were at their lowest in 1975 in America, groundhogs, whose natural enemies are the vanishing fox and bobcat, multiply at a rate comparable to that of rabbits. This means that if you shot a groundhog every second, you could never finish killing them all!

The groundhog population, if it continues at the present growth rate, will overtake that of the human population by 1993. That's a whole nation of munching groundhogs consuming our natural resources, destroying crops, and ravaging forests!

Only then will those putrid bleeding-heart liberals hold

their knees so that the conservationists will be able to slaughter those "little cuties!" But it will be too late, way, way too late.

Even as you clamber into bed tonight and fluff your pillow, these rank rodents are undergoing rapid mutations. All over the nation there are nuclear plants which put out radioactive waste. This waste is often planted in remote clearings.

Groundhogs live in just such clearings underground next to the waste. The effects of the radiation has caused genetic defects endowing offspring with mammoth growth of teeth and size. A farmer in Connecticut on July 8, 1978, found a groundhog who had devoured his German shepherd.

This picture was taken out of the farmer's back door after he had been chased inside. Notice the tusks. How would you like to see this 100 pound "cutie" chomping bean stalks in your backyard? Have any small children?

If you're a red-blooded American, you wanna nuke 'em, right? Wrong. Sorry, friend. Those lumbering killers love the stuff. Look at what the stuff's

done already!

What we need is an all-out land war with lots of flame throwers. Yeah! Flame throwers! They may be gnashing, abysmally hungry groundhogs, but they're still animals! They'd go up like a match with a spattering of hot napalm jelly!

But if you're a jelly-joweled liberal, you're still blubbering about these innocent victims of expanding human development. Well I can't wait 'til your kids get snatched from their see-saw by a ravenous and raging groundhog!



## Sign it next time

Dear Friend of Down Under:

Once again it is necessary to restate the policy of this paper with regards to letters. Unsigned letters or those using pseudonyms will not be published that way without prior consultation with the Editor concerning the motives of the writer.

The Editor

## Check it out

Dear Editor:

I was puzzled when I read the editorial column in the Feb. 19 *Guilfordian*, "Staying in Shape." I had read the piece in very similar, if not identical, form a week or two earlier in the *Greensboro Daily News*.

It appeared there, I think, under the by-line of one of the nationally syndicated columnists, probably Ellen Goodman. I am curious about its reappearance in our paper and thought you might want to check it out.

Sincerely,  
Carter Delafield

## Blatant copy

Dear Editor:

I write to call attention to the blatant plagiarism in last week's *Guilfordian*. The editorial "Staying in Shape" is copied, with only a few cosmetic changes, from Ellen Goodman's column in the *Greensboro Daily News*, February 13, 1980.

Considering that the column was published less than a week before this issue of the *Guilfordian* was printed, the *Guilfordian* editors must have realized that such obvious plagiarism would not escape notice. What could their motives be?

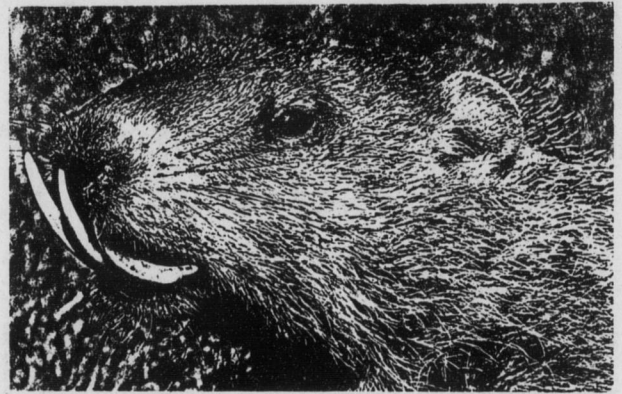
This reflects very poorly upon the newspaper staff and upon the school as a whole.

Sincerely,  
Kathy Neckeman

## An apology

Dear Editor:

In regards to my editorial "Staying in Shape," I would like to fully apologize for not



Groundhog mutants like these will be running rampant over the United States within a few years. This furry monster attacked and ate a German shepherd in 1978. It was tracked for 5 miles, but escaped after surviving two point-blank shotgun blasts.

## Letters to the Editor

Keep those letters coming; it's better to debate an issue without settling it than to settle an issue without debating it. All letters must be submitted by Friday, and should be no longer 200 words in length.

citing sources which were used in its conception. Ellen Goodman, a syndicated columnist, should have been credited in the editorial.

The *Guilfordian* should not be blamed for this unfortunate situation. I accept full responsibility and feel that more than an open letter of apology is in order. Therefore, I have also written Ms. Goodman explaining the predicament.

Granted that ignorance is no excuse, I was not aware of the consequences of such action. This has been a difficult lesson in journalistic ethics for me. For the *Guilfordian*, I insist that this incident not impede its commitment to its readers. I feel it should not mar integrity, rather I feel admonishingly informed and sincerely apologetic to Ms. Goodman.

Respectfully submitted,  
Beth Eakes

The *Guilfordian* apologizes to the community for not crediting Ellen Goodman's syndicated column in its editorial of last week's 2/19/80 issue. The matter has been dealt with internally, and Ms. Goodman has been notified. We hope to prevent a re-occurrence.

The Editor

## You're welcome

Dear Editor:

I would like to thank the *Guilfordian* -- and especially Beth Eakes -- for the helpful publicity given this coming year's Semester in England. It's very encouraging to receive such warm community support.

Sincerely,  
Richard M. Morton

## Administration drops a rock

Dear Editor:

It has long been evident that quality education and close community atmosphere have been sources of pride for Guilford College. These concepts are part of the fundamental motifs of Quakerism upon which this institution is based.

Recently, however, it appears

that the administration has undergone a major change in its interpretation of these concepts. It has taken a course in policy which severely limits the influence of the Guilford community on the decision-making procedures.

In particular, I am speaking of the recent decision to reshuffle the faculty positions in the geology department. This decision was made by certain administrators without the prompt notification of the head of the geology department. It was made with no publicity, no student input, and very little opportunity for rebuttal.

What has happened to the claims of open communication and community cooperation? At best, the decision represents a serious blunder on the part of the administration. At worst, it is evidence of a severe contradiction between claim and practice.

I would also like to question the prudence of the decision itself. In light of recent national and world-wide events, one can hardly doubt the demand of our society for people who understand the natural system. More and more, issues such as land use and depletion of natural resources exemplify many aspects of our lives.

It should be remembered that Guilford, as a liberal arts institution, has an obligation to prepare its students to handle the problems of the future. Cutting the faculty in the geology department is evidence of the administration's failure to recognize this obligation.

This decision represents a failure of the administration to acknowledge the important role of the geology department. In the past years, it has become a very important part of the college community. In a very short time, the number of geology majors has risen from none to forty-five.

Demand for education in earth sciences shows no signs of dwindling. Yet, in one swift, secretive decision, the administration has put severe limits on the ability of the geology department to meet these demands. I sincerely propose that this decision be reconsidered.

Yours truly,  
Kenneth Charles Tyson

## Guilfordian

Editor ..... Brian Carey  
Sports Editor ..... Leesa Shapiro  
News Editor ..... Paul Holcomb  
Features Editor ..... Gordon Palmer

Photography Editor ..... Steve Lowe  
Business Managers ..... Frank and Mary Merritt  
Columnists ..... Douglas Hasty, Bryan Smith

Campus Contact ..... Tamara Frank  
Circulation ..... Joost De Wit, Peter Kothe  
Layout ..... Russell Tucker, Sharon Ehly, Stephen Harvey

The *Guilfordian* reserves the right to edit all articles, letters, and artwork for taste, veracity, and length. The deadline for all copy is midnight on the Friday preceding the Tuesday of publication. Articles may be left on the office door in upstairs Founders, or mailed to Box 17717. The opinions expressed by the staff are their own and not those of the paper or of Guilford College.