

"Quest" Campaign Entering Final Phase

By Laura Peters

There has been a campaign taking place here at Guilford over the last three years, in quest of 7.85 million dollars. This fund-raising campaign will conclude this semester along with the Sesquicentennial celebration.

It has been given the title "Quest." It claims to be "... a significant step forward, conveying enthusiasm and hope for today's youth and tomorrow's leaders and a belief in their possibilities and opportunities to make a difference in the future (Quest, handbook)."

The investment funds will mean financial support of: 1) the students, 2) the faculty, 3) the library, 4) the physical environment, 5) the Friend's Center, and 6) overall endowment.

The monetary goal of the Quest campaign will soon be reached as the July deadline approaches. Guilford needs to raise \$550,000 towards the Library fund in the next five months to reach the \$4 1/2 million mark, as well as to attain a capstone grant of \$250,000 from the Kresge Foundation.

The Library fund has been the most publicized fund in the Quest campaign, for the Library is of immediate concern — building is to begin in April or May.

The other five areas

listed above have attained their monetary goals. In addition, excess funds have been raised, so appropriation of the money must be decided.

All money values discussed, however, are partially promised funds, meaning that donations have been made on paper but liquid funds will not be immediately available.

scholars, foreign students, minority students, Quaker students, students studying abroad, scholar athletes and students with demonstrated needs.

This fund will offer immediate rewards for Guilford students and will attract competitively ranked prospective students.

Second, the faculty sup-

draw on \$4,500,000 collected to pay for new construction and renovation of the present building.

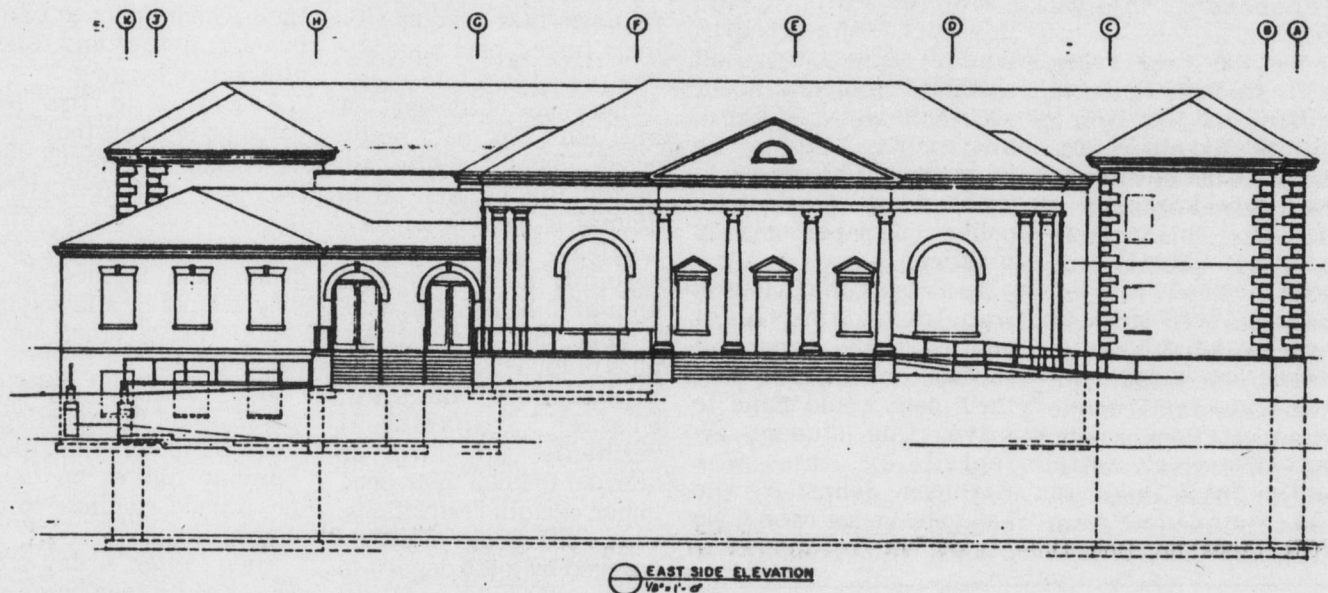
Expansion of the facilities will offer relief to an immediate problem. At present, there are 200,000 items stored in a library area designed originally for 125,000 items.

The new addition will offer room, as well, for more

plant. For instance, the residence halls require upgrading and improvement after 40 years of use.

\$400,000 will be used here, with another \$300,000 being put towards utility system modernization. An endowment will be established for this area of concern as well.

The Friends Center is a fifth area of concern. This



Architect Frank Asbury's rendering of the library.

They will be given to Guilford over the next two to three years.

The funds, immediately available, will begin to be applied to the needs of each of the five collection areas.

First, the student scholarship endowment of \$1,000,000 will be utilized in financially assisting academically gifted

port fund will offer a \$1,000,000 endowment collection for payment of salaries. Another \$250,000 has been allocated for research and teaching resources and equipment. With this \$250,000, a \$100,000 endowment is to be established, as well, for research and teaching development.

Third, the library will

study carrels, for an expansion of the Friends Historical Collection and for a permanent exhibition of two art collections in an open gallery. This gallery will constitute the center area of the new edition, around which the stacks will stand.

Fourth, money has been acquired to pay for areas of the college physical

Center deals with concerns of The Society of Friends as they are related to current issues. More importantly, the Center provides the Quaker values on which Guilford College is based.

Lastly, money has been raised to enhance the college endowment fund. Half of a million dollars was attained for this purpose which will strengthen the college's financial foundation.

Students can expect to directly benefit from an increased endowment. At present, Guilford looks to tuition to pay for 85% of its annual expenses. A larger endowment will therefore keep down tuition expenses.

These are all immediate and long-term rewards for the Guilford community — especially for the students. The quest is nearing its end.

**Best Wishes for
a Great Spring
Break from your
Bookstore staff!**

Bookstore Hours:
M-T-F 9 a.m. - 5 p.m.
W-Th 9 a.m. - 8 p.m.

**CRUISE SHIPS
NOW HIRING M/F**

Summer & Career Opportunities (Will Train). Excellent pay plus world travel. Hawaii, Bahamas, Caribbean, etc.
CALL NOW: 206-736-0775 Ext. 271F

**Guilfordian
Wishes You A
Safe Break!**