

## New art collection comes to library

By Laura Peters

Allen and Rachel Weller of Urbana, Illinois have donated their personal art collection to the future addition of Guilford's library.

The library's new wing will center around an open gallery in which glass cases will run the length of each wall.

In these cases, the Weller collection will be permanently displayed, acting as a teaching tool for the art department

while exposing all Guilford students to works of fine art.

Allen Weller has collected these works, in a number of different mediums, over the last 35 years. Most of the works are by contemporary American artists.

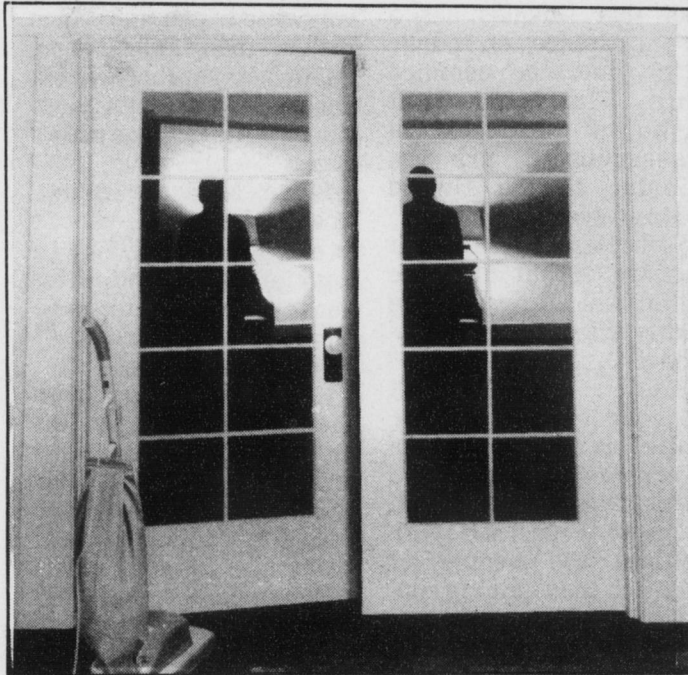
Dr. Weller attained resourceful connections to such artists through his position as Dean of the College of Fine and Applied Arts and as Director of the Krannert Art Museum at the University of Illinois.

moving to Greensboro to settle near their daughter, Judy Harvey and her hus-

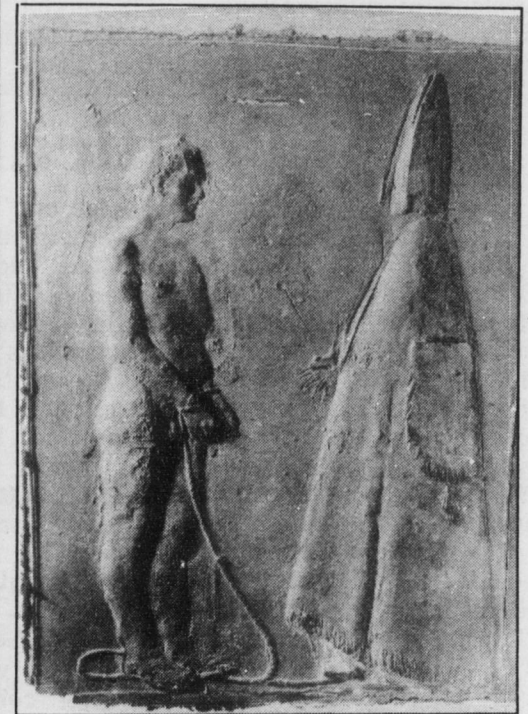
band Cyril, both faculty at Guilford.

Therefore, they will be able to enjoy their collec-

tion as well, while the Guilford community benefits from the art's aesthetic and pedagogical value.



Rajput, Early XIX Century Rana Bhim on horseback



Giacomo Manzù, Cardinal and Prisoner (1955).

Robert Bechtle, French Door (1965)

## College Bowl

By Eric Badertscher

Guilford once again had its annual College Bowl competition, this year held in the Gallery of Founders' Hall on Sat., Feb. 6.

Sponsored by the Strategic Games Society (SGA), the Bowl set six student teams against each other in a series of double-elimination matches which tested their knowledge of historical, literary, scientific, mathematical, and geographical trivia.

Organized by the SGA's Vice President Warden McLean and its Secretary William "Mookie" Moates, the competition took place from 1:00 PM to about 5:30 PM.

In that time nine matches were played, until the team of the six was the

final winner. Under the double-elimination system, a team was not disqualified until it had lost twice; also, each team played every other team.

Giving themselves distinctive names, the teams were the first-place "Guilco Guardians," captained by "Mookie" Moates and the second-place "Cream o' Wheat," captained by Scott "Toxic" Trent.

The others were: the "Bad Adders" under Ward McLean, "Evil Genius" under Jonathan Hatch, "Key West" under Tommy Gibson, and "The Spartans" under Grant Quinn.

Teachers volunteered their time to judge the Bowl and to ask the game questions. Thom Espinola

stayed to judge the whole time, while Tom Clark, Damon Hickey, Rex Adelberger, and Alex Stoesen stayed for shorter times.

The winning "Guilco Guardians," with members Vance Ricks, Shayne Weyker, Donna Crane, Eric Badertscher, alternate Warden McLean, and captain "Mookie" scrimmaged against Elon College's team on Wednesday evening, Feb. 24.

This series of matches, lasting from 6:30 to 8:40 PM, prepared the Guilford team for competition on Friday, Feb. 26, at the College Bowl Regionals in Knoxville, Tennessee.

Thom Espinola went with the team as a volunteer coach.



### Milner...

(Con't. from p. 7)

these things had come about.

The Council also set priorities for dealing with the above problems. Seth says that the main leak mentioned in the Nov., 1987, requests to the Student Affairs Committee is now being repaired. The lounge carpet will be installed over spring break, as will the microwave. Painting some halls (a request not in the petition) will also happen over spring break, and cable TV (another non-petition request) has already been installed. Comprehensive

remodeling is a long term plan, but depends on the school's finances.

Two groups have the responsibility in directing Milner renovations: the Senate Residential Life Committee, which controls short-term improvements, and the Quality of Resident Life Task Force under Nancy Cable-Wells, which directs long-term planning. Long-term schemes for Milner might include turning it into co-ed or all women's dorm, adding single-person rooms as well as lounges on each floor, or perhaps even building a new dorm to replace the present one.