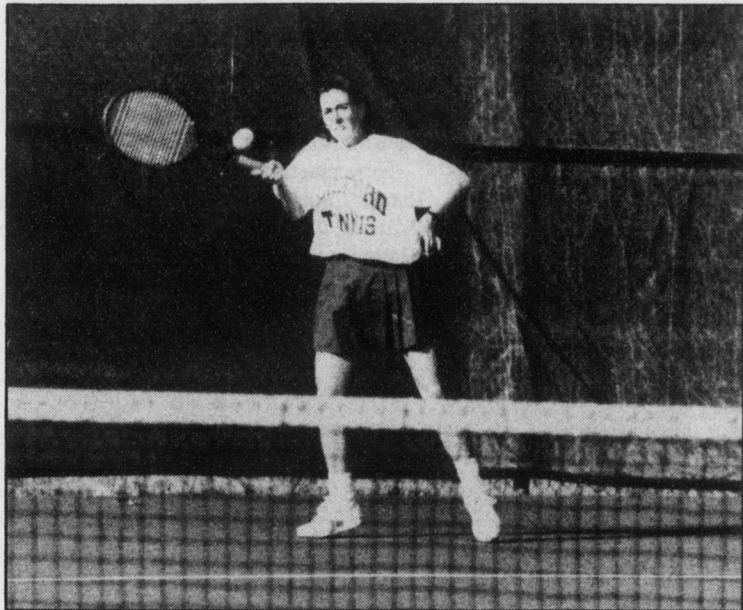
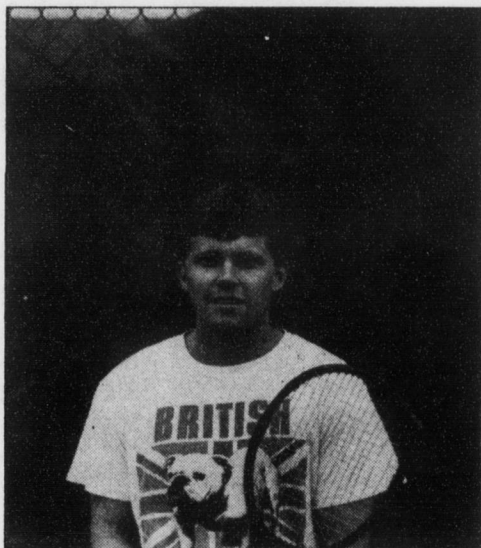


Excuse me, but why all the racket?



Both Quaker tennis teams are armed with three seniors this season, so 1992 figures to be a banner year at courtside. Enjoy the following preview of Guilford College tennis and find out who's making noise at the net.



Clockwise from top: Senior Emily King gauges a return in her court (courtesy SID); Coach Gayle Currie consults with Senior Cari Peterson through the fence (courtesy SID); Senior Terri Mancuso leans into a backhand (courtesy SID); Sophomore transfer Eddie Dangerfield follows through smoothly (Scott Shaffer); and Senior Pete Burroughs stands ready as top seed (Scott Shaffer).

