

# Coe resigns as interim chief financial officer

KARI ALBERTSON  
news editor

After twenty-two years of service to Guilford College, Dick Coe, the interim chief financial officer, resigns in order to accept a job as the chief operating officer and administrator of Friends Homes West.

"An opportunity came along that I just couldn't turn down. It keeps me in the Society of Friends. It's a promotion, a significant promotion," said Coe.

Provost Dan Poteet lamented Dick's departure as "a tremendous loss to the college. He's worn an amazing number of hats, each different. We hate to see him go."

Coe has worked with the business office, Budget Committee, the Board of Trustees, President Bill Rogers and Poteet. He created the Dean of Students office, helped organize and reorganize the Career Placement Center and Service Learning Department. He also set up the London abroad program and watched it expand.

Coe will remain at Guilford until February 16, 1996. During this

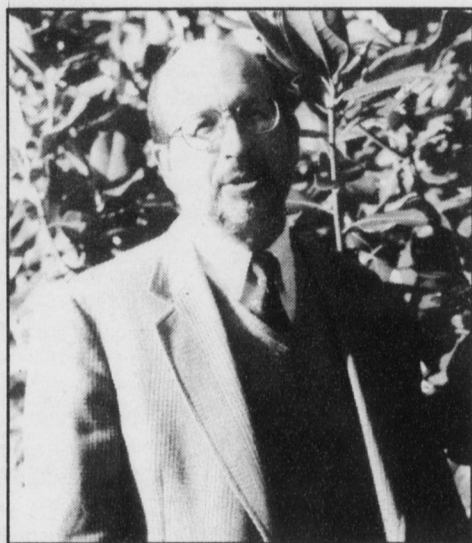
time, he plans to help put together the 1996-97 budget and develop "secure procedures for budget control and financial operations."

Work has already commenced on the hiring of a new chief financial officer. The incoming president, Don McNemar, has been contacted and is being included in the search. Rogers says that they hope to have one hired by June.

Rogers also asserted that Coe's resignation "does not reflect in any way on the immediate financial issues with which we are working this year."

"Indeed, we have already made great strides in developing the departmental adjustments necessary to reduce the expenditures this year in working toward a balanced budget," he continued.

Curt Bradbrook will take over



Mariah Sawyer

Dick Coe

the majority of Coe's responsibilities.

Coe commented, "I expect Dan Poteet will have a more direct role in the policy over the office. I expect they'll all go forward."

Poteet agreed, "They are all professionals: thorough and capable. They'll carry on just fine, even though we are losing a major pair of hands."

# Ingram chosen as trustee

staff report

Robert A. Ingram, president and chief executive officer of Glaxo Wellcome Inc. of Research Triangle Park, NC, has been appointed to the Guilford College Board of Trustees. Ingram will serve a six-year term.

"Guilford is fortunate to have bob Ingram on its board," said Guilford College President William R. Rogers. "He brings serious dedication to the purposes of Quaker independent higher education; organizational and financial expertise essential to the fiduciary responsibility of the trustees."

Rogers added that Ingram also has "vigorous energy and vision so important to building a strong future for Guilford College."

Currently, Ingram is a member of the PhRMA board and executive committee, the advisory board of the Chemical Heritage Foundation, the U.S. Committee for UNICEF, the Conference Board, the boards of trustees of the American Cancer Society and the North Carolina Museum of Art, and the board of directors for Project



Ingram

Hope.

In addition, he serves on the boards of visitors of the Fuqua School of Business at Duke University and the University of North Carolina at Chapel Hill.

The 32-member Guilford College Board of Trustees meets three times a year to oversee the business and affairs of the college. The board reviews and approves strategic and long-range plans and appoint the college president.

Ingram, although not a Quaker himself, will be joining a board, the majority of whom are members of the Religious Society of Friends.

# Days of CHAOS coming next summer

KARI ALBERTSON  
news editor

In order to make the first year of college a more coherent and appropriate developmental experience, Anne Lundquist is taking on the new position of coordinator of the first year program.

Already being discussed are many changes which will better connect, integrate and blend first-year orientation with FYS courses and will give the whole process, from the point of admission to a student's possible statement of major, a smoother and more effective approach, according to Dean of Students Mona Olds.

Lundquist states, "We're taking what already exists and intentionally connecting it. We want students to have a more seamless transition."

Orientation will now be called CHAOS (Community, Health, Advisement, Orientation and Ser-

vices) and will be a jumping-off point for first-year programming in classes such as chaos theory in physics, chaos management styles, etc.

The program will also be extended to four days devoted to acquainting students with resources, building community, and exploring diversity issues and college lifestyles.

Michael West asserts that "We have one goal in mind— helping freshmen make the transition. People are finally starting to recognize how vital the first semester is. It's the key to whether or not a student stays at Guilford."

Part of the new orientation program will include personal development issues which will continue throughout the first semester in FYS courses. Lundquist identifies sexual assault, time management, study skills, substance abuse, career and choice of majors as important issues.

Resembling both the old Venture program and this year's Avanti, the orientation staff plans to offer optional opportunities for students before the semester begins in order to "help students feel comfortable in a new environment."

Such activities will include rafting, mountain biking, backpacking, service projects (i.e. Habitat for Humanity), repelling, and ropes courses.

The new program will also stress a link between academic, social, and emotional life at college.

"Education doesn't necessarily end with the Persian War or algebraic equations. We have to teach new students how to live in a college setting. For them the biggest transition is independence," said West.

Lundquist agreed, "We're trying to make this a holistic experience and incorporate all the things students have to go through. Aspects of college and orientation were separated in the past. This will be our attempt to merge it."



## BACKPACK SALE

REG. 30. <sup>00</sup>	Now 18. <sup>00</sup>
REG. 32. <sup>00</sup>	Now 19. <sup>20</sup>
REG. 34. <sup>00</sup>	Now 20. <sup>40</sup>
REG. 36. <sup>00</sup>	Now 21. <sup>60</sup>
REG. 42. <sup>00</sup>	Now 25. <sup>20</sup>

## LEATHER BAGS

REG. 60.00 Now 36.<sup>00</sup>

## MINI BAGS

REG. 32.00 Now 16.<sup>00</sup>


America's best backpacks.

THE GUILFORD COLLEGE

# BOOKSTORE

Open: M, T, F 9-5 W, Th 9-8