

THE GUILFORDIAN

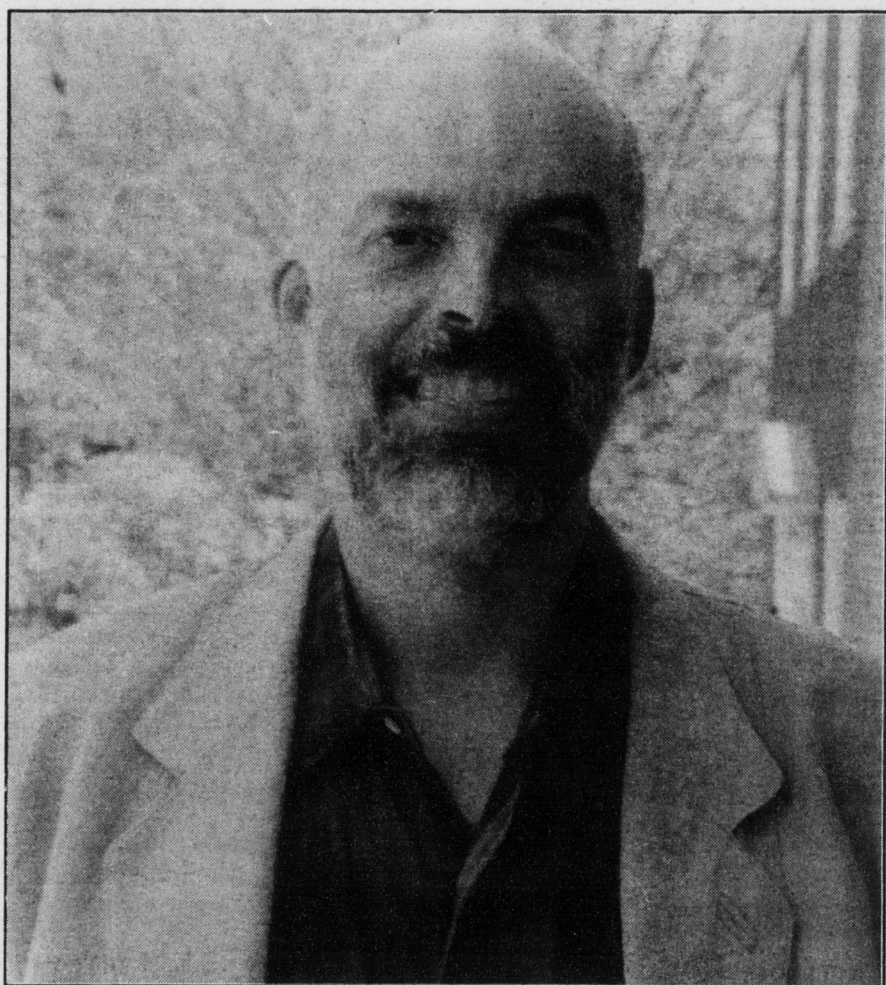
Greensboro, NC

Since 1914, but never quite like this

October 3, 1997

Restructuring causes conflict

♦Some faculty express their worries about the weaknesses of the decision-making process



Joe Groves is one of many professors who find fault with the current process.

BY MARJORIE HALL
News Editor

Barton Parks, JPS professor, feels like the restructuring at Guilford is moving too quickly.

Kathy Tritschler, head of the sport's studies department, is afraid that the people making curriculum decisions do not understand her program.

They are not alone. As the task forces publish the reports outlining what they plan to look at in their meetings, some faculty members at Guilford are voicing a variety of concerns about the recent turmoil on campus.

The concerns cover several issues. One major one involves all of the decisions having to be made in such a short time frame; President Don McNemar wants all plans to be finalized by the end of the semester. "My personal view is that the process could be slowed down. A lot of people want to see it slowed down," said Parks.

Some people are also unhappy about the nature of the decision-making process. The President put together the focus group that discussed this issue

all summer without input from the Clerk's Committee or the Nominating Committee. Some feel that the faculty handbook gives the responsibility of assembling such groups to these committees.

Some also feel that the task forces themselves bypass the structures the faculty and administration have set up as the school's governing bodies. "They undercut the consensus procedure that the school claims to follow," said Joe Groves, religion professor. "In a consensus procedure, you have to be open to a different outcome. And these task forces are not."

Some faculty are also upset that such a large percentage of the cuts are going to be in the faculty. They feel that cutting administrative positions, or reducing administrative salaries (which are much larger than professor's salaries) would be a better way to save.

In addition, the faculty was told a few months ago that the school had a balanced budget. Many want to understand why a large deficit exists now.

please see FACULTY on pg. 2

Board of Trustees chair resigns

♦Amid all the other changes on campus, Guilford must now replace its chairman of the board

BY ELLEN YUTZY
Staff Writer

After serving as chairman of the Board of Trustees for seven years, Charles F. "Monty" Milner has stepped down.

Milner's resignation following the September 19 and 20 meeting of the Board of Trustees ended his total of 15 years on the Board. "I look back with great satisfaction on the many accomplishments of Guilford College during the past 15 years," Milner said. "Now that Guilford is in the good hands of Don McNemar and our dedicated Board of Trustees, it is

time for me to step aside and let our new leaders meet the opportunities and challenges of this outstanding institution as it heads toward the new century."

Some have wondered how the resignation of the chairman of the Board of Trustees will affect the prospects of the sweeping changes proposed recently by Guilford President Don McNemar. Trustee David Edgerton said, "I don't see this as having any impact."

Edgerton believes that Milner has done an excellent job as chairman, and that interim chair Stanley Frank of Greensboro will also do a good job. Frank will

serve as chair until the board names a new chairman. Edgerton describes Frank as a "longtime supporter of Guilford College."

During his career as Board chair, Milner presided over the dedication of Hege Library, Bauman Telecommunications, and six student apartment buildings. He also chaired the process to find a replacement for retired President William Rogers. During his career on the Guilford Board, Guilford's endowment has risen from \$7.5 million in 1982 to more than \$57 million.

"Monty has given enormously of himself for the benefit of Guil-

ford College," McNemar said. "His understanding of higher education and his vision for Guilford have enhanced the Board and the college, making Guilford a leading liberal arts institution."

As the name of Milner hall suggests, Milner's family has strong ties to Guilford. Both his father and sister were graduates. His uncle, Clyde A. Milner, served as president of the college from 1934 to 1965. Several other family members have graduated or worked at Guilford College.

Serving as chairman was only the most recent position in which Monty Milner had been a part of *please see MILNER on pg. 2*

A committee is an animal with four back legs.—John Le Carre