

Union plans exciting year and Seredipity bash

News, pg. 2

Life after beer: a bleak existence?

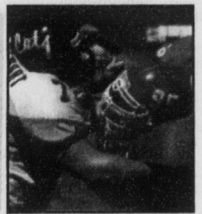
Features, p

King David meets with God's spokesperson

World, pg. 10

Humberto Padilla leads Quakers to opening win

Sports, pg. 11



THE GUILFORDIAN

GREENSBORO, NC

SEPTEMBER 18, 1998

Expansion of YMCA being considered

By David Jester
STAFF WRITER

Envision, if you will, the Guilford College YMCA. Imagine its beautiful swimming pool, the wonderful gymnasiums, well-outfitted weight room, functional offices, tennis courts, water fountains, and friendly smiling faces encountered upon every visit. Now double it to twice the size.

Guilford College and the YMCA are working out a proposal that could expand the existing YMCA facility. The plan, if carried out, would double the size of the existing YMCA by adding a new athletic center adjoining to the two existing buildings (Ragan Brown and Alumni Gymnasium).

According to Arthur Gillis, College Financial Officer and advocate of the YMCA proposal, the plan is attempting to "combine our (YMCA and Guilford College) needs, combine our resources, and create a very interesting facility that meets everyone's needs."

Exactly how interesting of a facility will this be?

The list of new athletic resources is large: a main gym area including an indoor track, basketball courts, volleyball courts, and enough room for concerts and large meetings. It would also include a fitness center complete with therapeutic pool, aerobics rooms, classrooms, kitchen space, soft space (a place to just chill), and computer facilities.

The project would also create a competition-worthy, cross-country track as well as an adjacent parking area for all of the cars belonging to the new YMCA members.

Now imagine the 4,500 new members, approximately

Please see **YMCA**, page 2

Students and faculty join together to protect the arts

By Devra Thomas
STAFF WRITER

"The arts are among a few things that can change a person's life in a matter of moments."

So wrote one student about why the arts are important at Guilford. The new Arts Coalition agrees and demands that Guilford take more notice and care of its art programs.

On Sept. 7th, a little over 30 students met with three faculty members (Jack Zerbe, Christa Wellhausen, and Kami Rowan) to discuss why the arts are important to them and to the Guilford community at large.

The students spread across disciplines, coming from art, theatre, music, and dance as well as other humanities divisions, with a few people from the sciences thrown in for good measure.

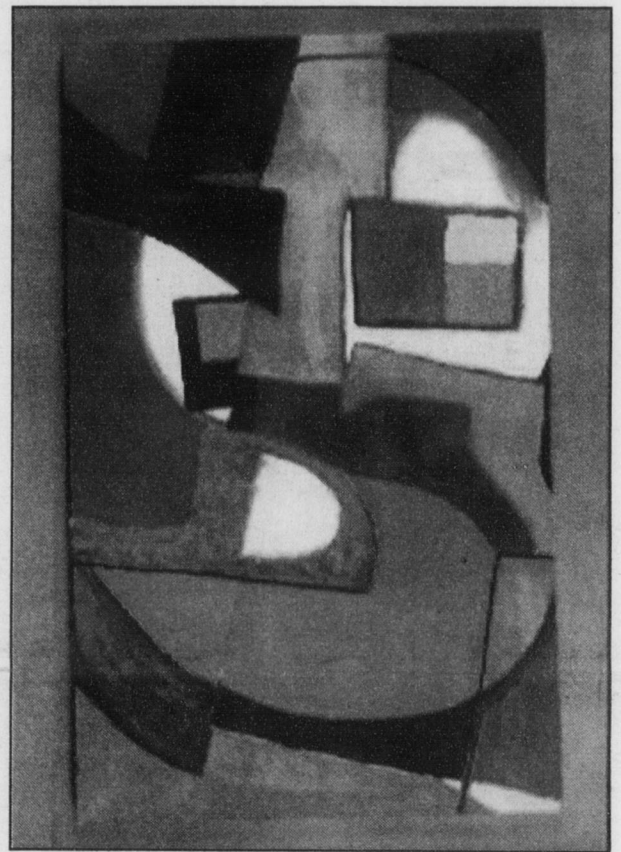
Everyone shared a similar interest: deciding what the arts mean to the community here and how to better promote them.

The Arts Coalition is the brainchild of this year's residents of the Pope House. Their theme is "Art Forms." Mollie Howey, Hans

Meyer, Sarah Bernhardt, and others have taken it upon themselves to make sure the arts stay alive on campus. The house and coalition started as a response to last year's sudden cutting of the dance program. As it was, the college had one dance instructor who could only teach about three classes at a time.

The dance students of last year, plus many others who were committed to the arts, banded together and deluged President McNemar with emails, letters, and walk-ins concerning the dance program. Nothing was done to restore the program and the final performance of last year was a bittersweet one.

Christa Wellhausen,



MARIAH SAWYER

"Untitled Composition," 1997, oil on canvas

Guilford's dance teacher, has been brought back this year through the good graces of the theatre department.

Please see **Arts**, page 3

Many campus offices move

◆ Shift an effort to make Founders more of a "student center"



AMY ROUSE

Santes Beatty's new office is upstairs in Founders.

By Ellen Yutzy
NEWS EDITOR

First-year students likely aren't the only people who got lost at the beginning of this year. Over the summer the offices of the academic dean, the First-year Center, and the Career Development Cen-

ter all moved. The college also added an office for African American affairs and a Multicultural Resource Center to better serve the student body.

Moving the First-year Center and the Career Development Center (CDC) to Founders serves similar goals for both. "There's a definite advantage to being here," said Irene Harrington, Director of the Career Development Center. Previously, the CDC was upstairs in New Garden hall, and, as Harrington puts it, "off the beaten path." The center now occupies the old recreation room in the basement of Founders. The move accom-

panies the center's merger with the internship office and puts the two in close proximity.

Please see **Offices**, page 3

New Offices

Academic Dean's Office:

Upstairs in library. x2181
Martha Cooley, Dean

African American Affairs:

Upstairs in Founders. x2166
Santes Beatty, Director

Career Development Center:

Founders basement. x2187
Irene Harrington, Director

First-year Center:

Upstairs in Founders. x2125
Anne Lundquist, Director

Multicultural Resource Center:

Upstairs in Founders. x2133
Daphne Strickland, Director