
SPECIAL EDITION

The Guilfordian Mission Statement

The Guilfordian seeks to provide fair and accurate coverage of newsworthy events in the Guilford community and beyond. We seek not only to inform, but to provide a forum for community dialogue. The Guilfordian also provides a vehicle for student writers, photographers, and designers to hone their talents and create a portfolio of their work.

To The Community:

Our staff strives to be fair and impartial, giving equal weight to all sides of each story. However, because the staff is comprised entirely of community volunteers who are solely responsible for the publication's content, we acknowledge our limitations in achieving these goals.

The demographic make-up and extracurricular activities of our editorial board members undoubtedly shape its perspective. For example, the board has a striking lack of people of color, athletes, and queer individuals and therefore does not reflect the general

A letter from the President

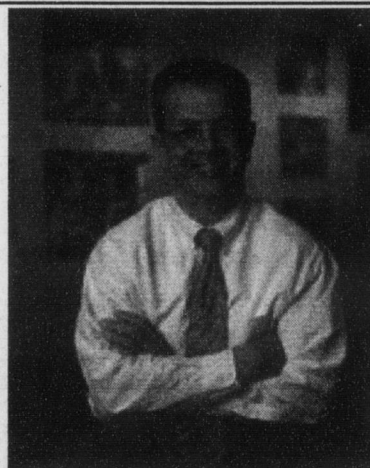
Dear Students:

Welcome to Guilford College for another academic year. Whether it's your first year or last year, it's an opportunity to expand not only your education but also your circles of experiences and friends. It's my sophomore year as college president. Rather than fear that I'll suffer a stereotypical sophomore slump, let's pray for a sophomore surge.

Much has happened over the summer. We've announced a series of improvements in dining

make-up of the main campus student body. We ask for the community's help in changing this.

Also, while it would be easiest for our editors and staff writers to remain completely impartial by resigning their membership to all other clubs and organizations, that would not be in keeping with the college's mission of community involvement. Thus, our writers and editors split their time between The Guilfordian and a host of



President Kent Chabotar

services that I hope you have already noticed, with more to come. Security was again made a college department after a year of outsourcing. Campus life has been reorganized with faces new and old in different positions to improve

other activities including Student Union, the Guilford College Choir, the rugby team, and resident advising. Though we encourage this degree of community involvement, we acknowledge that it can cause impartial decision-making to be a very difficult task.

For this reason The Guilfordian would like to ask that you, the community, take an active role in shaping the views and issues you see discussed in The Guilfordian. If you

services for students. After turbulent negotiations, Early College is back for a second year as a full-fledged school in the Guilford County public school system. We are still completing a daunting list of renovations that include new windows in Milner Hall, restoration of the columns on Hege Library, a parking lot near the Frank Family Science Center, roof work on King and New Garden and various landscaping, painting, and infrastructure projects. New faculty, coaches and other staff have been hired.

Continued on Page 10

feel that an important issue has not been raised or a critical viewpoint is not being heard, The Guilfordian encourages you to write a letter to the editor, submit an article as a guest writer, or better yet, join our staff and help decide what issues will be covered.

Only with support and input from all sections of the community can we equally and fairly cover all events.

See classifieds for Guilfordian job listings.