

THE GUILFORDIAN

Greensboro, N.C.

Volume 91, Issue 18

February 11, 2005

www.guilfordian.com

Guilford prepares for 10-year review

Taleisha Bowen

Staff Writer

"It's not going to interrupt students' lives," said Elwood Parker, a professor in the Mathematics Department who is also a Guilford alum.

"As a student - I was a senior - the only reason I even knew it was happening was that I happened to be among the leadership of some of the organizations. If I hadn't been there, I wouldn't have even known it was going on," Parker said.

Guilford administration and faculty members are already working in preparation for a reaffirmation of accreditation by the Southern Association of Colleges and Schools (SACS). Groups have been formed to determine places Guilford may need to focus on to ensure compliance with SACS standards.

Mary Ellen Chijioke, Director of Hege Library, will present initial findings later this month. These findings will serve as a preliminary estimate of what steps, if any, the college will need to take in order to be in compliance with SACS guidelines.

These initial results will form the structure of a compliance document, required by the SACS Commission on Colleges, consisting of the college's own estimate of how well it currently meets SACS standards. The compliance document must be submitted by March 2006.

"I don't think there are any places where we're not in compliance, or won't be by 2006," said Guilford president Kent Chabotar.

"The hard part isn't being in compliance," said Chabotar. "The hard part is having the documentation to back it up."

"Accreditation' is review of the quality of higher education institutions and programs," according to the website for the Council for Higher Education

Continued on Page 3

Smoking policy revamped

Lisa Meagher

Staff Writer

In an effort to have less smoking on campus, Guilford has again revised the new smoking policy for the 2004-2005 school year. Campus Life is now working

on changing the designated areas for the dorms, the last areas to have non-smoking entrances.

The policy, which was introduced in fall of 2001 and has changed since last fall, began with smoke-free dorms and has progressed each semester with more smoke-free areas.

Campus Life felt it was important to clear the air from the main entrances of buildings and most public areas on campus.

Administration has progressed slowly to eliminate smoking, so as to not rush the policy and let the student body know of the changes along the way.

"I think it's hard for people to get used to, but it's more of a public health danger" said Anne Lundquist, Dean of Campus Life.

Guilford has a higher population of smokers than non-smokers.

Guilford's goal is not to be smoke-free, but rather a more air-friendly and safer environment in which to live. For the most part the changes are

made, but there are still some questions and unfinished regulations regarding the policy.

"We did decide to allow Residence Life to work with students this spring to determine which entrances to Resident Hall Buildings would be smoking (or) smoke-free"

gazebos and place urns where they were needed for the smokers.

"Having a designated space is helpful, like the gazebos," Lundquist said.

Assistant Professor of Foreign Languages and Division Director Hiroko

Hirakawa said via e-mail, "As a smoker, I think it's good because I don't have to feel guilty about 'contaminating' the air for non-smokers as much as I used to."

And for those who are trying to quit, having less places to smoke could possibly decrease the amount in which they do.

"It forces me to go outside - smoking in the rain, snow, etc. - which helps me smoke less," said Hiroko.

Although the policy has taken four years to become publicly acknowledged, there are students who are still unsure as to where the smoking areas are on campus, besides the gazebos.

There are no-smoking signs where there are ashtrays and smoking urns, including the front entrances of some buildings on campus such as Duke hall and Hege library.

"I think it's conflicting that they have ashtrays where they have no smoking signs," said senior Josh West. "(Campus Life) is trying to be clear. I see where there are signs, but it's just a time of adjustment."

Continued on Page 3



TALEISHA BOWEN/GUILFORDIAN

New gazebos exist due to changes to the smoking policy

said Lundquist via-email. "That is happening now and will go into place once settled."

Concerned about the safety and health issues for all students living in the dorms, Lundquist said there could be problems if a cigarette is left unattended in a dorm room, or if non-smokers are breathing second-hand smoke.

The two past surveys about cigarette smoking on campus helped administration figure out how and where the designated and non-smoking areas were to be.

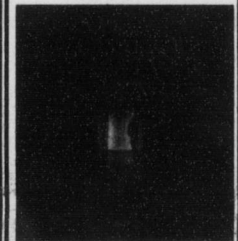
These surveys asked questions about smoking areas, issues, preferences, suggestions, etc., and spawned a few community forums that discussed the issue.

The forums helped Campus Life implement the smoking



On the record: The new director of Student Counseling

Page 4



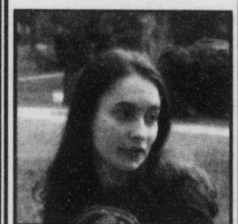
Hide and Seek review

Page 6



Students experience The Art of Kissing

Page 7



Kathy Oliver's Katharsis

Page 9