

Annual Greek Play Today In The Glen

Dramatic Club Presents Euripides' "Iphigenia"

This afternoon, Saturday, May 13, at three forty-five o'clock, the Pierrette Players, under the direction of Dr. Willoughby, will present *Iphigenia*, a Greek play by Euripides. As Dr. Rondthaler stated Wednesday morning in chapel, many colleges would not care to present a Greek play, and few would dare to do so. That the production of a Greek play every year at Salem has become a tradition is significant in the cultural life of the college. Without the careful organization and the faithful and skillful directing of Dr. Willoughby, and without the co-operation and the loyalty of the Pierrettes, and without the sacrifice of time of both, *Iphigenia* could not be presented. The play given at Salem this year is especially distinguished in that Mr. Vardell composed, somewhat in the manner of the ancients, the music for the chorus.

The cast of characters for *Iphigenia* is as follows:

Iphigenia, eldest daughter of Agamemnon, King of Argos; supposed to have been sacrificed by him to Artemis at Aulis—Mary Virginia Pendergraph.

Orestes, her brother; pursued by Furies for killing his mother, Clytemnestra, who had murdered Agamemnon—Edith Kirkland.

Pylades, Prince of Phokis, friend to Orestes—Beulah Zachary.

Thoas, King of Tauris, a savage country beyond the Symplegades—Adelaide Silverstein.

A Herdsman—Margaret McLean.
A messenger—Virginia Nall.
Priestesses—Phyllis Noe, Alois Padrick, Betty Boone.

Chorus of Captive Greek Women, handmaids to Iphigenia—Mary B. Williams, Frances Mendenhall, Wanda Mary Huggins, Frances Butler, Irene Clay, Tommy Frey, Rosalie Smith, Caro McNeill, Josephine Courtney, Margaret Bagby, Rebecca Hines, Virginia Bailey.

The Goddess Pallas Athena—Emily Moore.

Admission to *Iphigenia* is by Pierrette ticket or fifty cents.

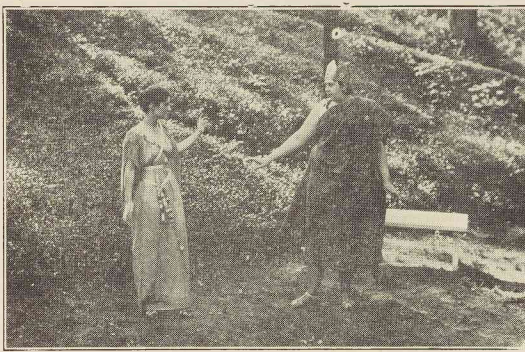
Salem Girls Speak At Alumnae Meeting

Miss Mary Audrey Stough Is Elected President of Char- lotte Association

Tuesday night at the home of Mrs. Charles Ross on Rosewell Avenue in Charlotte the Charlotte Salem Alumnae Association was hostess to the high school seniors who are interested in Salem and to several Salem girls, who gave short talks. Miss Frances Caldwell was in charge of the program and expressed an appreciation on the part of the college for the invitation to the meeting. Miss Mary Louise Mickey told of the changes made in the Music School. Miss Emily Mickey spoke on the extra-curricular activities, and Miss Susan Calder spoke on the Athletic Association. Both the alumnae and the high school seniors seemed very much interested.

At a short business meeting prior to the program Miss Mary Audrey Stough was elected president for 32-33. The Charlotte Association is four meetings every year.

Scene From Iphigenia



Dr. Pearl Willoughby Discusses Greek Drama

Background of "Iphigenia" Presented in Expanded Chapel

A discussion of the characters, setting, and historical background of the Greek drama, *Iphigenia in Tauris*, by Euripides was presented in expanded chapel period by Dr. Pearl Vivian Willoughby, who is directing its production at Salem on Saturday afternoon. Through this discussion all students and faculty, whether well acquainted with drama or not, were assured of a real insight into the spirit as well as the action of the play. This familiarity was enjoyed by the ancients who were well versed in mythology and knew all the circumstances leading up to the point of action with which the drama begins, and it is well that a modern audience should have at least some part of such fore-knowledge.

Dr. Willoughby first gave a brief account of the lives of Tantalus and his descendants. The former, who is addressed in the opening lines of the play as the "man of torment and of pride," was the son of Zeus and a man of evil deeds who often displeased the gods. His son, Pelops, fell in love with the beautiful Hippodamia whom he won in marriage by his victory in a chariot race. Pelops, however, inherited the evil nature of his father, Tantalus, and after his marriage he committed many crimes which aroused the particular anger of Hermes who wanted vengeance on his house. This Hermes achieved by giving to Atreus, one of Pelops' two sons, a golden lamb which promised power and wealth to its owner. Thyestes, the other son, immediately tried to gain possession of this lamb, and a terrible feud ensued, as a result of which Atreus killed his brother and was in turn slain by one of his own kinsmen.

Atreus' two sons were Agamemnon and Menelaus. The former was the

STUDENTS MUST REGISTER FOR 1932-'33 CLASSES

Registration for next year will take place from Monday, 16 until Friday, 20, when all students are expected to file with the registrar a registration card or a withdrawal blank. This, of course, does not apply to Seniors.

Summer school registration is necessary, and all courses expected to be taken during the summer months must be approved. For this purpose cards may be obtained from Miss Blair on Monday.

Misses Kimel And Pratt Give Brilliant Recital

Interpret Difficult Program With Musical Intelligence

The series of graduating recitals closed on Monday night when the Salem College School of Music presented to a large audience in Memorial Hall Miss Doris Kimel, coloratura soprano and Miss Evelyn Pratt, pianist both of Winston-Salem. Miss Kimel is a pupil of Ernest Lee Schofield, and Miss Pratt of Miss Viola Tucker. The soloists were assisted by Miss Ruth Marsden, who played Miss Kimel's accompaniments at the piano, and by Dean Vardell, who played the orchestral accompaniment to Miss Pratt's Concerto on the organ.

Miss Kimel opened the recital with "Pastoral," an Old English song (arranged by H. Lane Wilson). This was a rather light number with pretty melody and many cadenzas. "L'Amour de Moy" was a quiet French chanson of the fifteenth century, which Miss Kimel interpreted with feeling in her sweet tones. Mozart's "Alleluia" was a powerful number. She brought her first group to a climax with "Tarantella, Neapolitana" by Rossini, which was brilliant and dramatic.

Miss Pratt opened her part of the program with "Arioso" by Bach-Pisani, which she played with much depth of tone and in a decisive manner, both of which showed her understanding of its demands. "Consolation" by Liszt was made up largely of rolled chords and arpeggios, which brought contrasts between the brilliant and the quiet. She closed

COMMENCEMENT PROGRAM

- May 27—Transfer of caps and gowns.
- Academy graduation.
- May 28—Salem Alumnae Day.
- 4:30 Luncheon in costume.
- 3:00 George Washington Pageant.
- 4:30 Senior Masque.
- 8:15 Grand Concert.
- 10:00 President's Reception.
- May 29—11:00 Baccalaureate Sermon by Bishop Penick.
- 4:00 Washington Memorial Service.
- 7:30 Senior Vespers.
- May 30—Graduation Day.
- 10:35 Daisy Chain Procession.
- 11:00—Graduation address and presentation of diplomas.

Recital At Last Music Hour Of The Year

Advanced Students Show Marked Improvement

As the last music hour of the year there was a recital by rather advanced students in the music department. Though some of them appeared for the first time in music hour, most of the players had performed before, and it was interesting to note their improvement during the course of this year.

The following program of piano, harp, and vocal solos was given:

- Romance in E Minor Jensen
- Song of Brittany Chamindale
- Lois Moores
- Etude—"Ghosts" Schlytte
- Marjorie Mendenhall
- Petite Etude Schumann
- Prelude No. 3 Carlos Salzedo
- Ruth Miller
- Valse, Op. 64, No. 3 Chopin
- Lois Moores
- Hunting Song in A Flat Schumann
- Beulah Wall
- Rustle of Spring Sinding
- Rachel Bray
- Autumn Rogers
- Behold, the Master Passeth By Hammond
- Frances Peterson
- Rondo (from Sonata, Op. 26) Beethoven
- Nancy Thompson
- Nocturne, Op. 72, No. 1—Chopin
- Margaret L. Johnson
- Troika Tchaikowsky
- Martha Davis

Faculty Committee Conducts Vespers

Mr. McDonald Speaks on Ideals in Life

On Sunday evening, May 8, the Faculty Advisory Committee had charge of the Vesper program, with Miss Lawrence presiding. Miss Dorothy Thompson played the prelude. After an opening hymn Miss Lawrence led in prayer, and Mrs. Rondthaler read a part of the twelfth chapter of Luke. Miss Hazel Read played a selection on the violin. Mr. McDonald spoke to the group on ideals. He said that it seemed particularly appropriate on Mother's Day to talk on ideals, for, not only in Christian countries, but through

Student Federation Held At N. C. C. W.

Mary Catherine Siewers Elected State Treasurer

At the recent North Carolina Federation of Students, which was held at N. C. C. W. on May 6-7, Mary Catherine Siewers was elected treasurer. This honor came at the final session of a most interesting conference, where Miss Siewers, Mary Katherine Thorpe, and Florence Aitchison were representatives for Salem. They give a report of a good time and a worth-while week-end spent with representatives of schools from over the state.

They arrived Friday at five o'clock, and after registering and being taken to their rooms by their hostesses of N. C. C. W., the delegates were entertained at a buffet supper. At eight-thirty they assembled for an address by Mr. Taylor of the governor's council, who set forth the plan that is made to relieve economic strain in North Carolina. By developing natural resources by scientific means, and by making every spot in North Carolina so beautiful that tourists will be attracted, the state hopes to regain prosperity and to better her condition even in normal times.

After the lecture there was a dance in the gymnasium where the girls broke, because there were more of them than boys, and a good orchestra furnished music.

On Saturday morning delegates from girls' and boys' schools had separate discussion groups concerning their particular problems. A general session followed, and results of the discussions were compared. It appeared that the honor system exists only in schools as small as Salem, where it functions very well as compared with other schools. The so-called "honor system" of larger colleges is simply a "snapper system," with the student council acting as a court to try offenses.

The afternoon session was a discussion of extra-curricular activities—finding time and money for them. Though, it was shown, smaller schools are forced to exact a very high budget to cover the expenses of their activities, large colleges collect a small fee from each individual and still find money for salaries of the heads of their organizations. It is a loop-hole for graft and "some dirty politics." Albright of Carolina talked on public in school, state, and (continued on Page Four)

Clubs Elect Officers For Coming Year

Four Organizations Announce Election Results

Elections are still taking place on the campus among the organizations. The following club officers have been elected:

Mathematics Club
President—Dorothy Heidenreich.
Vice-President—Mary Stockton.
Secretary—Lena Petek.
Treasurer—Mary Louise Fuller.

French Club
President—Mary Lillian Colute.
Vice-President—Ruth Crouse.
Secretary-Treasurer—Jean Patterson.

Alpha Chi Alpha
President—Dorothy Heidenreich.
Vice-President—Susan Calder.
Secretary—Mary Absher.
Treasurer—Elinor Phillips.

Latin Club
President—Elinor Phillips.
Vice-President—Dorothy Sims.
Secretary—Virginia Allen.