

The Salemite

Published Weekly By The
Student Body of
Salem College



Member
Southern Inter-Collegiate
Press Association

SUBSCRIPTION PRICE : : \$2.00 a Year : : 10c a Copy

EDITORIAL STAFF

Editor-In-Chief Elouise Sample
Business Manager Helen Smith

EDITORIAL DEPARTMENT

Music Editor Laura Bland
General Editor Alice Horsfield
Sports Editor Cornelia Wolfe

Assistant Editors:—
Florence Joyner

Mary McColl

Staff Assistants:—

Anna Wray Fogle

Helen Totten

Peggy Brawley

Emma B. Grantham

Helen McArthur

Margaret Holbrook

Sara Harrison

Sara Burrell

Betty Sanford

Helen Savage

Katherine Snead

Betsy Perry

Elizabeth Hatt

Frank Campbell

FEATURE DEPARTMENT

Feature Editor Maud Battle

Staff Assistants:—

Mary Turner Willis

Josephine Gibson

Mary Thomas

Evelyn McCarty

Cramer Percival

Leila Williams

Mary W. Spence

Betty Bahnsen

Tillie Hines

Peggy Rogers

Mary L. Salley

Madeline Hayes

BUSINESS DEPARTMENT

Assistant Business Manager Edith McLean
Advertising Manager Prather Sisk

ADVERTISING STAFF

Peggy Bowen

Virginia Taylor

Rebecca Brame

Mildred Troxler

Virginia Cartor

Margaret Patterson

Grace Gillespie

Jane Kirk

Circulation Manager Pauline Daniel
Exchange Manager Bill Fulton
Associate Exchange Manager Frances Watlington
Associate Exchange Manager Sybil Wimmer
Assistant Circulation Manager Elizabeth Piper
Assistant Circulation Manager Millicent McKendrie
Assistant Circulation Manager Christine Dobbins

1937 14th Year 1938
Associated Collegiate Press
Distributor of
Collegiate Digest

REPRESENTED FOR NATIONAL ADVERTISING BY
National Advertising Service, Inc.
College Publishers Representative
420 MADISON AVE. NEW YORK, N. Y.
CHICAGO - BOSTON - LOS ANGELES - SAN FRANCISCO

ON ENTERING CHAPEL

Will you consider yourselves reprimanded?

—Z.

FROM OLD TO NEW

"The old order changes giving place to the new." We, the back numbers with our stale ideas and dry pens are going on the shelf to give you new editions, full of pep, fresh thoughts, and original schemes its day.

To the new Editor: May you be a crack article getter upper and upside down backwards reader.

To the Business Manager and Staff: We hope the merchants will ask you, phone you, and beg you for ads.

To the Feature Staff: May your brain storms come weekly and before assignments are due.

To all other reporters: Use your wit; learn to ask questions tactfully; don't meddle. We hope you don't get kicked out on your ear.

Good luck!

—F. J.

AN UNEXPLORED COUNTRY

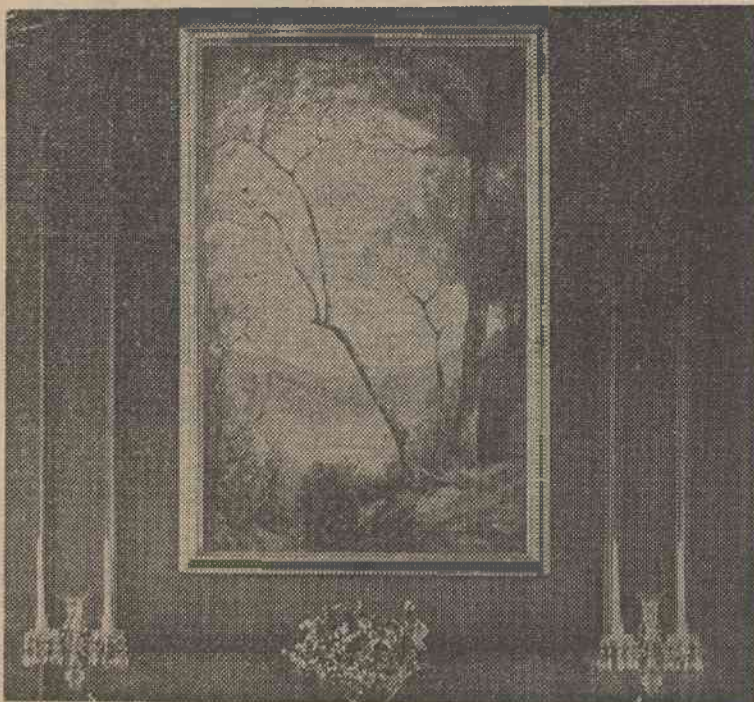
Here are directions for finding an unexplored country. Go into the library and take fifteen steps forward; turn to the right and pass through an open doorway into the Reading Room. Take ten more steps forward and stop. At your left you will find a mysterious door. Open it quietly and step forward. There below you is an undiscovered country. When it was first created it was called the Terrace and that name still serves. As yet few know of its existence, and still fewer have discovered the richness of its natural resources. But it is a free country, and open to any who will take possession of it. You can make it your own, or you can leave it a No-Man's-Land.

This country, strangely enough is accessible only when the sun is shining and skies are clear. In rainy weather it is formidable and uninviting. The ground itself is smooth and flat and well settled with green shelters for weary voyagers.

It is a land of sunshine and spring. It is a refuge for dreamers, poets, weary scholars, idle travelers. And it is yours for the taking.

—H. M.

PICTURE OF SMOKIES HUNG IN LIBRARY



This beautiful painting of a range of the Great Smoky Mountains, done by Frederick Ballard Williams, has been hung in the Salem College library. The artist made the sketch while on a tour, then did the picture to be hung over the fireplace in the Bahnsen reading room. The painting is a gift of Agnew H. Bahnsen, who recently presented the north wing of the library in honor of his wife. Works of Williams are shown in many of the art galleries of the country.

—JOURNAL-SENTINEL STAFF PHOTO.

LANDSCAPE PAINTING HUNG IN THE LIBRARY

Further charm has been added to the Reading Room by the landscape painting of the Smoky Mountains, the work of Frederick Ballard Williams.

Mr. Williams is one of the best and most famous landscape painters in the United States. His pictures have been exhibited not only in the galleries of this country but also those of London, Paris, Venice, and Rome. He has received many awards and medals for his work.

Mr. Williams painted the picture from sketches he made of North Carolina Mountains when he was visiting here last summer. This makes it very fitting for Salem's Reading Room.

Hung in the panel over the fireplace the picture tends to focus attention to that point bringing out the beautiful, harmonious colors, surrounding it, the graceful lines of the fireplace, and the spaciousness of the room. It completes the beauty of the Reading Room.

It is also wonderful in itself, portraying gorgeous, zestful life with a background of the peace and serenity of the age-old mountains.

Mr. Bahnsen's thought and care in choosing the equipment and decorations of the Reading room are appreciated by the students. They agree with Dr. Rondthaler that it is the most beautiful they have seen.

Ditty of the Week

Whatever trouble Adam had,
No man, in days of yore
Could say when Adam joked,
"I've heard that one before."
—The 'Scope.

Half-Timers

The University of Colorado will offer next fall a two-year course for the 53 per cent who spend only that amount of time in college.

A "THANK YOU" NOTE

It has long been the custom of those in authority at Salem to listen to any suggestions for changes which the students might like to make. As a result of the expression of the desires on the part of a large group of students for several changes to be made in the Green Room, when we returned from Easter holidays we saw new evidence of this thoughtful consideration —Mrs. Rondthaler has busied herself during the holidays in planning and having the Greenroom redecorated. She chose the color scheme of red and black which adds a bright gaity and cheerfulness to the room. The new attractiveness of the room was joyfully commented upon by all the returning students and is appreciated anew every day.

We are truly glad to belong to an institution which considers the suggestions of the student body vitally important and which follows these suggestions whenever possible.

—H. A.

MY FRIEND

Strange, isn't it, how God makes so many men?
Building them mostly all the same.
Each with little feeble intellect and brain —
Going on in the way some other has been,
Coming not to raise aloft his own as Maker's name;
Existing only, on his lowly plane.

But once in a while he suddenly seems
To smile more benignly on us below,
And he puts a great heart and a wonderful soul
Into a man, and fills him with dreams;
Showing him things other mortals may never know,
And he carries his name from pole to pole.

Then sometimes instead of a Caesar, a Lincoln, or a Milton —
Rather than a Wagner, or da Vinci or a gifted Shakespeare —
He sees the need of a man to be a real friend,
And not with pen so noble, nor roaring gun —
But with an eye for a tear and a heart without fear,
He makes a friend to share our hopes to the journey's end —
And this was His thought when He first made you,
And gave you to me to be my friend."

—Jay Anderson.

EDWARD HOLDER DISCUSSES PACT FOR A. A. U. W.

Edward Holder of the history department of Salem College led a round-table discussion on world events at the meeting of the American Association of University Women Tuesday evening. The meeting was held at the home of Mrs. W. L. Wharton.

The recent pact between Italy and England was analyzed. Mr. Holder took each section of the pact and gave his interpretation. He then discussed the effect each would have on world problems.

Mr. Holder discussed the effect the pact would have on Germany's invasion of Austria and its effect on Russia.

"Who is that fellow with the long hair?"
"Just a fellow from Yale."
"I've often heard of those Yale locks."

A typical American is one who will fire you for incompetency and then give you a letter of recommendation.

Thrifty

"My Scotch boyfriend sent me his picture."
"How does it look?"
"I don't know. I haven't had it developed yet."—Collegio.

Publicity

Katherine King, Chairman
Eunice Patten
Lucile Stubbs

Vespers

Mary Thomas, Chairman
Clara Pou
Emma B. Grantham
Nancy O'Neal

Financial

Margaret Patterson, Chairman
Sue Forrest
Marian Sosnick
Mary Jo Pearson

World Fellowship

Mary V. Rogers, Chairman
Jane Nash
Mildred Minter

"Y." Store

Esther Alexander, Chairman
Alice Kinlaw
Ada Lee Utley

Freshmen

Frances Klutz, Chairman
Geraldine Baynes
Margaret Betty Gillespie
Josephine Hutchison

"Y" Notes

Everyone is invited to Vespers Sunday evening, May 1, at 6:30 in the campus living room. We are very glad to have as our speaker Mrs. Gordon Spaugh, better known to most of the girls on the campus as Miss Riggan. Special music for the occasion will be furnished by a well-known musician of the city — Mr. Brooks Bynum.

Y. W. C. A. COMMITTEES APPOINTED

Industrial

Betty Sanford, Chairman
Marion Johnson
Millicent McHenry
Patty McNeely
Helen Totten

Evening Watch

Peggy Rogers, Chairman
Nell Kerns
Margaret Wilson

Social

Virginia Bruce Davis, Chairman
Grace Gillespie
Frances Turnage
Jessie Skinner
Ruth Schnell

Community Service

Eleanor Kerr, Chairman
Anne Mewborn
Jane Alice Dilling
Mary Davenport

"Y." Room

Emily McCoy, Chairman
Josephine Carmichael
Katherine Cole

Music

Frances Watlington, Chairman
Sarah Lynn
Helen Savage
Katharine Snead.