

The Salemite

PUBLISHED WEEKLY BY THE STUDENT BODY OF SALEM COLLEGE



Member Southern Inter-Collegiate Press Association

SUBSCRIPTION PRICE : : \$2.00 a Year : : 10c a Copy

Member Associated Collegiate Press Distributor of Collegiate Digest

REPRESENTED FOR NATIONAL ADVERTISING BY National Advertising Service, Inc. College Publishers Representative 420 MADISON AVE. NEW YORK, N. Y. CHICAGO • BOSTON • LOS ANGELES • SAN FRANCISCO

EDITORIAL DEPARTMENT

Editor-In-Chief KATHARINE KING Associate Editor CARRIE DONNEL

EDITORIAL STAFF

News Editor Nancy O'Neal Sports Editor Sue Forrest Music Editor Alice Purcell Faculty Adviser Miss Jess Byrd

Staff Assistants— Betty Vanderbilt Marie Van Hoy Elizabeth Dobbins Mary Worth Walker Elizabeth Johnston Barbara Whittier Johnnie Moore Nancy Rogers Mary Lib Rand Veda Baverstock Marian Norris Frances Neal Sara Henry Elizabeth Weldon Henrie Harris Sebia Midgett

FEATURE STAFF

Feature Editor Madeleine Hayes E. Sue Cox Cecelia Nuchols Margaret Ray Betsy Spach Jane Harris Jill Nurenberg Reece Thomas Sara Goodman Eleanor Barnwell Esther Alexander

BUSINESS DEPARTMENT

Business Manager Marvel Campbell Assistant Business Manager Lillian Lanning Advertising Manager Betty Barbour Exchange and Circulation Manager Barbara Norman

ADVERTISING STAFF

Flora Avera Lucille Springer Nancy McClung Becky Candler Betty Anne White Bonnie Angelo Doris Nebel Mary Lou Brown Avis Lehey Nancy Chesson Martha Louise Merritt Aliene Seville Polyanna Evans Ruth O'Neal Rosemary Halstead Dorothy Sisk Lyell Glynn Sarah Lindley Betty Moore Martha Hine Betty Brietz

IN ANTICIPATION OF CHRISTMAS . . .

" . . . and she wrapped him in swaddling clothes, and laid him in a manger, because there was no room for them in the inn." And so the Child was born, and here He was worshipped by those first worshippers, bearing gifts, those princely gifts from the far off lands. Today, as on that first Christmas, and as those first worshippers, we are preparing to pay our homage to Him, the Child in the manger; yet how different will be our gifts, and yet, one can't help thinking of how much more worth, spiritually, if not materially. True, there will be many who will "have no room for them" in their hearts; those who will not pay homage to Him this year, for the Star of Bethlehem, pointing the way to the manger, will not be visible to many parts of the world, where it is blotted out by the clouds of war, but how much brighter it will shine for us, we, who are still at peace with our fellowmen.

—M. R.

... THEN WE ARE IGNORANT"

The most apparent characteristic of students today is their mental and emotional confusion. This bewilderment is behind much of the bravado which might convince our indignant elders that they were justified in calling us to task for our indifference, ignorance and apathy. We are not apathetic. Neither are we indifferent. If having learned our lesson well is ignorance, then we are ignorant.

All our lives we have been indoctrinated with absolute pacifism. Our parents, filled with horror at the last war and its outcome (imbued us with a real aversion to war. Later in school and in college we were told that no cause, however great, was worth the sacrifice of so many lives, and for this we were given historical proofs. The effect of twenty years of indoctrination cannot be wiped away in two months. We had been taught to beware of speeches and beating drums. Is it surprising that now we do not know what to believe?

Instead of censuring us or playing with our emotions, should not those responsible for our education try to give us understanding of the dilemma in which we have been placed? We do not expect sure and quick solutions of age-long problems. We would ask our teachers to speak judiciously, with tolerance, and with emphasis on the long view.

—Smith Weekly.

LE COIN FRANCAIS

Les vacances de Noël approchent, et tout le monde a l'air d'attente. Peut-être pense-t-on à l'arbre de Noël-cette grosse branche de sapin qu'on s'amuse à orner, ou peut-être pense-t-on à la gaieté et à l'esprit de la saison. Cet esprit se montre partout.

En ville on voit de brillantes couleurs — rouge, vert, jaune, et beaucoup d'autres. Il y a beaucoup de houx suspendu au-dessus des rues, et il y a des lumières qui éclatent gaiement la nuit. Dans les vitrines des boutiques on voit beaucoup de cadeaux, et souvent il y a un St. Nicolas. Quelque fois on y voit des poupées, habillées joliment et délicatement, pour donner à quelque petite fille. Il y a aussi des choses pour les garçons en effet, il y a quelque chose pour tout le monde à qui on voudrait donner un cadeau. Toutes les vitrines sont décorées gaiement des couleurs de la saison.

En somme, ces choses donnent à la ville l'air de fête, et on peut s'amuser à aller en ville, et à regarder les vitrines, même si on ne peut rien acheter.

MIKE COLLEGE PICKS -

Friday, December 6:

9:30 P. M. — Herbert Marshall and Grace George in "Kind Lady" —CBS.

12:30 A. M. —Sammy Kaye—CBS.

Saturday, December 7:

6:00 P. M.—Report to the nation —Summary of week's activities in Washington by Albert L. Warner and John C. Daly—CBS.

9:00 P. M.—Your Hit Parade—With Barry Wood, Bea Wain, Hit Parade. Chorus, Mark Warnow's orchestra—CBS.

11:15 P. M.—Everett Hoagland —CBS.

Sunday, December 8:

2:00 P. M.—Ignace Jan Paderewski —Speaks on Alien Registration—CBS.

3:00 P. M.—New York Philharmonic-Symphony Orchestra — John Barbirolli, conductor; Gitta Gradowa, pianist—CBS.

4:30 P. M.—Andre Kostelanetz and Albert Spalding in "Music That Refreshes" with Lily Pons as guest soloist—CBS.

8:00 P. M.—Helen Hayes Theater —Starring Helen Hayes—CBS.

12:30 A. M.—Tony Patsor—NBC Blue.

Monday, December 9:

9:00 P. M.—Lux Radio Theater —With guest stars—CBS.

10:15 P. M.—Ina Ray Hutton—NBC Blue.

Tuesday, December 10:

9:00 P. M.—We, The People —With Gabriel Heatter and guests—CBS.

10:00 P. M.—Glenn Miller—CBS.

Wednesday, December 11:

9:00 P. M.—Fred Allen—With Kenny Baker and Portland Hoffa —CBS.

2:00 A. M.—Raymond Scott —MBS.

Who always borrows, never lends? Your roommate.

Who brings around her low-brow friends? Your roommate.

Who hogs the only study lamp? Who uses your last postage stamp? Who wears your necklace out to vamp? Your roommate.

But who's a constant pal to you? Who overlooks the things you do? Who knows and loves you through and through? Your mother.

MORAL FOR THE WEEK: No matter how grouchy you're feeling, You'll find the smile more or less healing.

All around the front teeth, It grows in a wreath Thus preserving the face from congealing.

BARD'S BOX

When I consider every thing that grows Holds in perfection but a little moment, That this huge stage presenteth naught but shows Whereon the stars in secret influence comment; When I perceive that men as plants increase, Cheered and checked even by the self-same sky, Vaunt in their youthful sap, at height decrease, And wear their brave state out of memory: Then the conceit of this inconstant stay Sets you most rich in youth before my sight, Where wasteful Time debateth with Decay, To change your day of youth to sullied night;

That time of year thou may'st in me behold When yellow leaves, or none, or few, do hang Upon those boughs which shake against the cold, Bare ruined choirs, where late the sweet birds sang. In me thou see'st the twilight of such day As after sunset fadeth in the west; Which by and by black night doth take away, Death's second self, that seals up all the rest. In me thou see'st the glowing of such fire, That on the ashes of his youth doth lie, As the death-bed whereon it must expire, —(Shakespeare Sonnets).

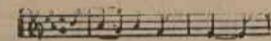
THE "Y's" WORK



DOUBT

When I see a delicate flower Opening its face to the light, When I glimpse the golden sunshine Pushing away the night, When I hear the beautiful music Which radio swiftly sends, When I grasp with calm assurance The hands of loyal friends, Can I doubt that there is a God? —Martha M. Boutwell Wellesley '42.

MUSIC NOTES



MUSIC HOUR

The first children's recital of the year was presented Thursday afternoon at the regular Music Hour. Many of the children who performed are pupils of the normal training students of the School of Music.

RADIO PROGRAMS

Saturday, December 7, 1940.

1:55—WJZ: Metropolitan Opera Company presents Mozart's "Marriage of Figaro," with Elizabeth Rethberg, Ezio Pinza, and others. 9:35—WJZ:

NBC Symphony Orchestra, Arturo Toscanini, conductor—all Sibelius program: Second Symphony in D. Ponjola's Daughter Swan of Tuonela Finlandia

Sunday, December 8, 1940.

3:00—WABC: New York Philharmonic Symphony; John Barbirolli, conductor. program: The return of Lemminkainen; Symphony No. 1 in e minor Sibelius

Rhapsody on a Theme of Paganini Rachmaninoff Finlandia Sibelius 5:00—WEAF: Metropolitan Opera Auditions. 9:00—WABC: Symphony Orchestra; Eugene Ormandy, conductor; Jussi B. Joerling, tenor.

'Twas just a kiss I asked you for, And you gave your consent. Then I asked if e'er before, Your kisses you had lent. When you said no, in tones so meek, My heart swelled up with pride. But when you showed me your technique, I knew darn well you lied.

THEATRE CALENDAR

CAROLINA

Mon., Tues., Wed. — "Tin Pan Alley" Thurs., Fri., Sat. — "Escape"

STATE

Mon., Tues., Wed., Thurs. — "City for Conquest" Fri., Sat. — "Rivers End"

FOERSYTH

Mon., Tues. — "Maryland" Wed., Thurs. — "Earthbound" Fri., Sat. — "I'm Nobody's Sweetheart"

COLONIAL

Mon., Tues. — "Typhoon" Wednesday — "The Man Who Talked Too Much" Thursday — "Chan at the Wax Museum" Fri., Sat. — "Range Buster"

IT'S IN THE STARS



You should look at the world with the eyes of a Pollyanna, for it is truly a "glad" world for you. You will probably have material wealth; so dismiss worries about your financial future. You are born with a cheerful disposition and meet people easily. You are so frank and honest yourself that you don't suspect deceit in others (but you seldom get taken in). You are alert, observing, and quick at making decisions.

Nov. 29 - Dec. 12 Dec. 8 — Adelaide Reid Dec. 8 — Katherine Schwalbe Dec. 12 — Nancy Stone Dec. 9 — Jeanne Cowper Dec. 6 — Becky Howell Dec. 6 — Phyllis Pinkston

Heard said from a Hockey Test Paper: Duties of the Captain: To argue with the officials.