

Ramsey Plays Uke And Acts See Review For Other Facts

By Lee Rosenbloom

Nancy Ramsey was stenciling programs for "Goodbye My Fancy", but she very kindly took time out to smoke a cigarette and to dictate a few pertinent facts about her "life history".

Since Nancy is best-known at Salem for her ukelele and for those peculiar positions (standing on head, cart-wheels, back-bends etc.) that she assumes in moments of deep thought, perhaps some explanation is needed. Nancy claims, "I was so puny and skinny when I was three years old, and we lived out from town and I didn't have any playmates, and all I did was sit on the floor and play with my paper dolls. So Mother thought I ought to go to dancing school and get some exercise and make some friends,—and I did until I was thirteen. And I still like dancing—anything from the conga to the shag, and that's why I'm so limber and everything—".

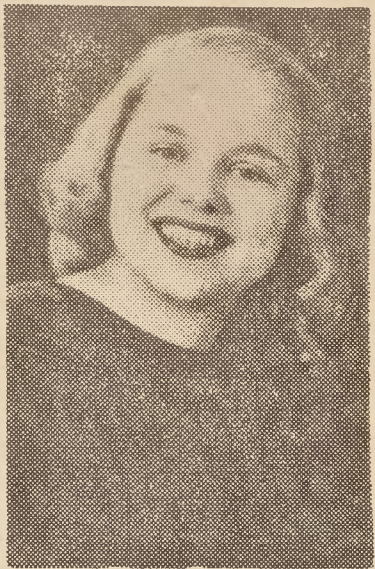
Nancy is a day student, and a sophomore transfer from W. C. She moved to Winston-Salem on September 23, the same day school started. English is her major, and she plans to write after she gets out of college, preferably short-stories and novels. Last year Nancy had a poem published in "The Yearling", the W. C. freshman publication.

Dramatics is another of Nancy's interests. She played "Woody", the amused and amusing secretary, in the recent Pierrette production. Nancy has also acted in plays at Fassifern where she attended high school for four years. Her favorite role was that of Kathleen in "Riders to the Sea".

Collecting shoes, jewelry and records are Nancy's three hobbies. She has some thirty pairs of shoes

Visit our store and see the
Moravian Christmas Star
and Cookies.

ARDEN SALEM STORE
614 S. Main St.



Nancy Ramsey

"Yes, dear, the kind you wear". Red is her favorite color, but her room is done in yellow—yellow sheets, spread, curtains and rugs.

All these "pertinent facts" make it evident that Nancy Ramsey is a colorful and talented addition to Salem College.

Carry Borges

(Continued from page one)

of Trustees; Mr. Gorsuch and Ralph Lawrence as janitors; and R. L. Sprinkle as the telephone man.

The technical staff of the play was headed by Miss Catherine Nicholson. She was in charge of the lighting and costumes. Chairman of the technical staff committees were: stage manager, Juliana Wright; scenery, Polly Hartle, with special painting effects by Bryan Balfour; properties, Ann Simpson; costumes, Patsy Crawford; make-up, Florence Spaug and Stanley Johnson; house management, Delores McCarter; and publicity, Fae Deaton.

Eleven Artists

(Continued from page five)

edged in wide black lines. The main colors are red and gold. He has used matallic gold in such a way that the surface varies when viewed from different directions.

"Mending Nets" by Claude Howell shows three fisherman sitting on a pier mending their nets. The bodies of the men have a greenish cast.

"Mill End" by Earl Mueller is a painting of two cottages surrounded by windblown trees.

"Head" by Edwin Shewmake, instructor in the art department at Salem, was on display. This painting has a movement that shows either the profile or the entire head of the man. Mr. Shewmake employed the elements Picasso developed without using distortion.

"Personals"

One day this week we happened to be passing through closets, hat boxes and shoe boxes in Biting and Strong. Casually glancing from side to side, we happened to notice that . . .

Betty Parks will be spectacularly attired in nine cords of flaming firewood. Around her neck she will wear a grey and white striped cat—an inhabitant of Strong basement.

Marion Watson will be gowned in an unusual self-creation. The complete works of William Shakespeare (X in manuscript

will form the full, ruffled skirt. The top will be black velvet, with Dr. Todd's autograph embroidered in white.

Sybel Haskins has bought a new pair of sun glasses and two cases of suntan oil for her trip south this weekend.

"Sugar Ray" Wilkerson will wear a beefsteak over her right eye and purple trunks for her Madison Square Garden ring debut this weekend.

Martha Fitchett will stun Newton this weekend in a smart Washington and Lee pennant with the new side drape. Argyle hunting socks will complete her ensemble.

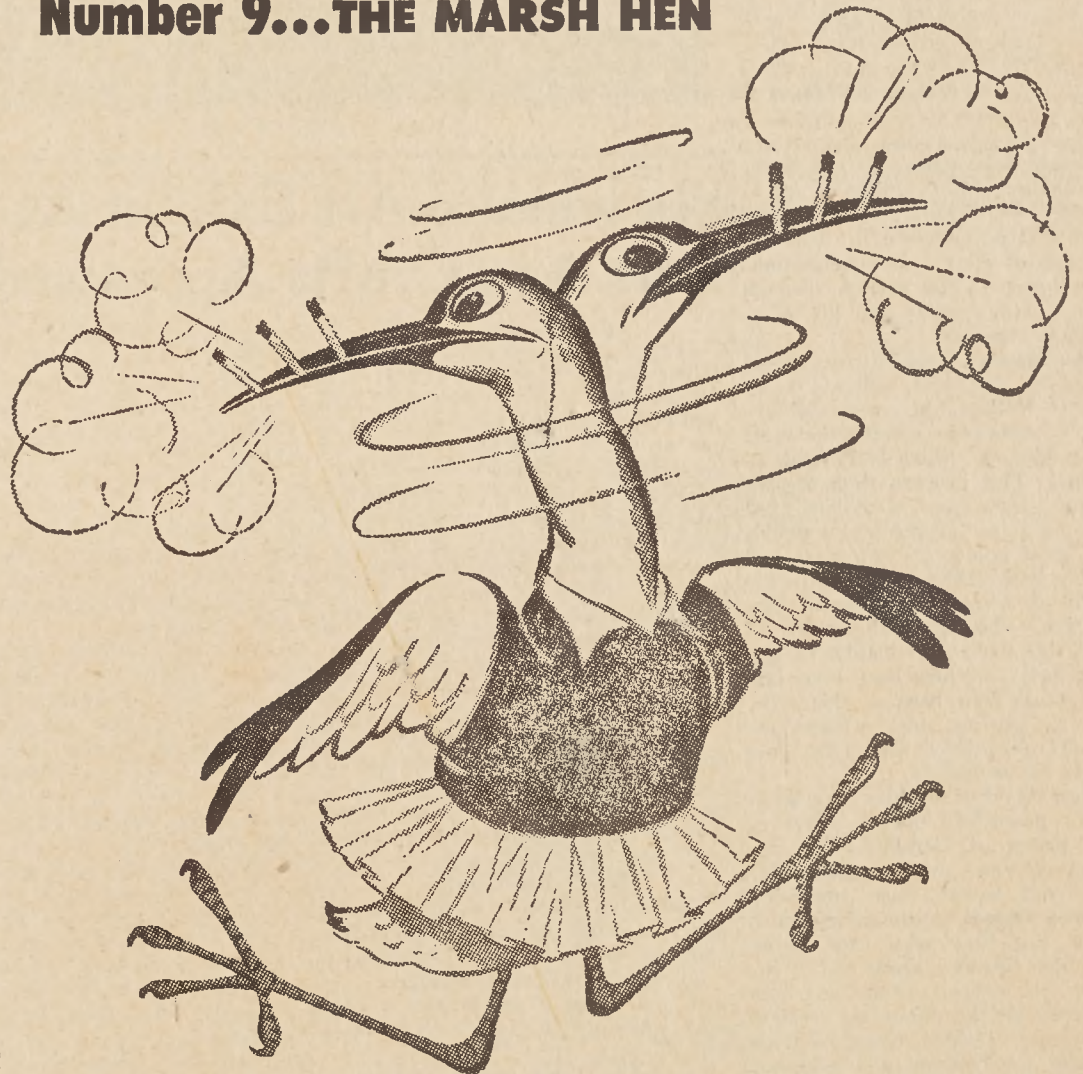
Victor, Columbia and Decca Records

Bocock-Stroud Co

Fourth at Spruce St.

Campus Interviews on Cigarette Tests

Number 9...THE MARSH HEN



"For a while they had me swamped!"

Seems like this confused fowl got mixed in a metaphor and was almost turned into a guinea pig. The story goes she got caught in a welter of quick-trick cigarette tests . . . one puff of this brand, then a puff of that . . . a sniff, a whiff — a fast inhale and exhale. And then she was supposed to know all about cigarette mildness! Is that the way to treat a lady?

And is that the way to judge a cigarette?
We think not. That's why we suggest:

The sensible test — The 30-Day Camel Mildness Test, which simply asks you to try Camels as your steady smoke — on a pack after pack, day after day basis. No snap judgments needed. After you've enjoyed Camels — and only Camels — for 30 days in your "T-Zone" (T for Throat, T for Taste) we believe you'll know why . . .

**More People Smoke Camels
than any other cigarette!**



Hasty Tasty
University of Wisconsin
Madison, Wisconsin

The Daily Cardinal

Elect Naale P.

Meeting the gang to discuss a quiz—a date with the campus queen—or just killing time between classes—the Hasty Tasty is one of the favorite places for a rendezvous for students at the University of Wisconsin. At the Hasty Tasty, as in university campus haunts everywhere, a frosty bottle of Coca-Cola is always on hand for the pause that refreshes—Coke belongs.



5¢

Ask for it either way . . . both trade-marks mean the same thing.

BOTTLED UNDER AUTHORITY OF THE COCA-COLA COMPANY BY
WINSTON COCA-COLA BOTTLING CO.

© 1950, The Coca-Cola Company