

# Unique History Of Salem College Seal Since Its Origin In 1907 Is Revealed

By Kitty Burrus

The Salem College seal which is now found stamped on the annual, handbook and bulletin has not always been there. Forty-six years ago the covers of these publications were quite bare. It was not until 1907 that a seal was designed to represent Salem College.

Like no lights out and 12 o'clock permission, the college seal was first an idea in the minds of the students. Then Bishop Rondthaler, president of the college, was petitioned and Salem College was on its way toward having a seal! It is still unknown who designed the seal, but it is known the design came from a member of the student body.

### Scroll Appears on Seal

On the face of the seal, which is about the size of a silver dollar, is a shield divided into three parts. On the right side of the shield is a scroll resembling an open page. This shield suggests that each student has a story to write by her life, and that part of that story will be written while she is a college student.

On the left side of the shield is a crown of laurel leaves. Just as the Greek was awarded a laurel wreath at the end of a race well run, so the college student will be awarded when she has com-

pleted four years of good academic work. The Latin and math which confronts the student is quite different from the long road ahead of the runner, but the sense of achievement at the end is the same.

### Books Replace Mountain

At the top of the seal there was originally drawn a profile of Pilot Mountain, signifying that in any achievement there is an upward climb. Pilot Mountain was used on the seal because of its proximity to Winston-Salem and also because of a unique pinnacle which rises 164 feet above the rest of the mountain. However, the profile of the mountain is now replaced by a row of books of uneven heights.

This change was made quite accidentally about 20 years ago when an engraver who had never seen Pilot Mountain thought the various pinnacles of the mountain were books of different heights. Thus when the seal next appeared, a shelf of books replaced the mountain. However, knowing that books are the path to learning, this is perhaps more appropriate for a college seal than the mountain.

Also appearing on the seal are these Greek letters: kappa, gamma and delta. It is presumed that these letters stand for some Greek motto, but to this day the real

meaning remains a mystery. Nowhere in Salem records can there be found any clue to the significance of these letters.

The border of the seal contains the words Salem College—Founded 1772. The border with these words enclosing the shield signifies that Salem College embodies the paths to learning by books, a story to be written by the life of each student and a laurel crown of achievement.

## Dr. Patterson

(Continued from page one)

Pat". As religious emphasis speaker, Dr. Patterson will begin his talks on Monday night, and will continue each night through Thursday. These talks will be held at 6:30 p.m. in the day students center. He will speak to the student body in chapel on Tuesday and Thursday. His topics will include "Must I make a decision?", "Is life more than clay?", "Who comes first with me?" and "The Christian home".

Dr. Patterson will also be available for special appointments with students who desire counseling or other information.

# L. Roberts

WINSTON-SALEM N. C.

## Superior Self-Service Laundry

Complete Washing & Drying Service

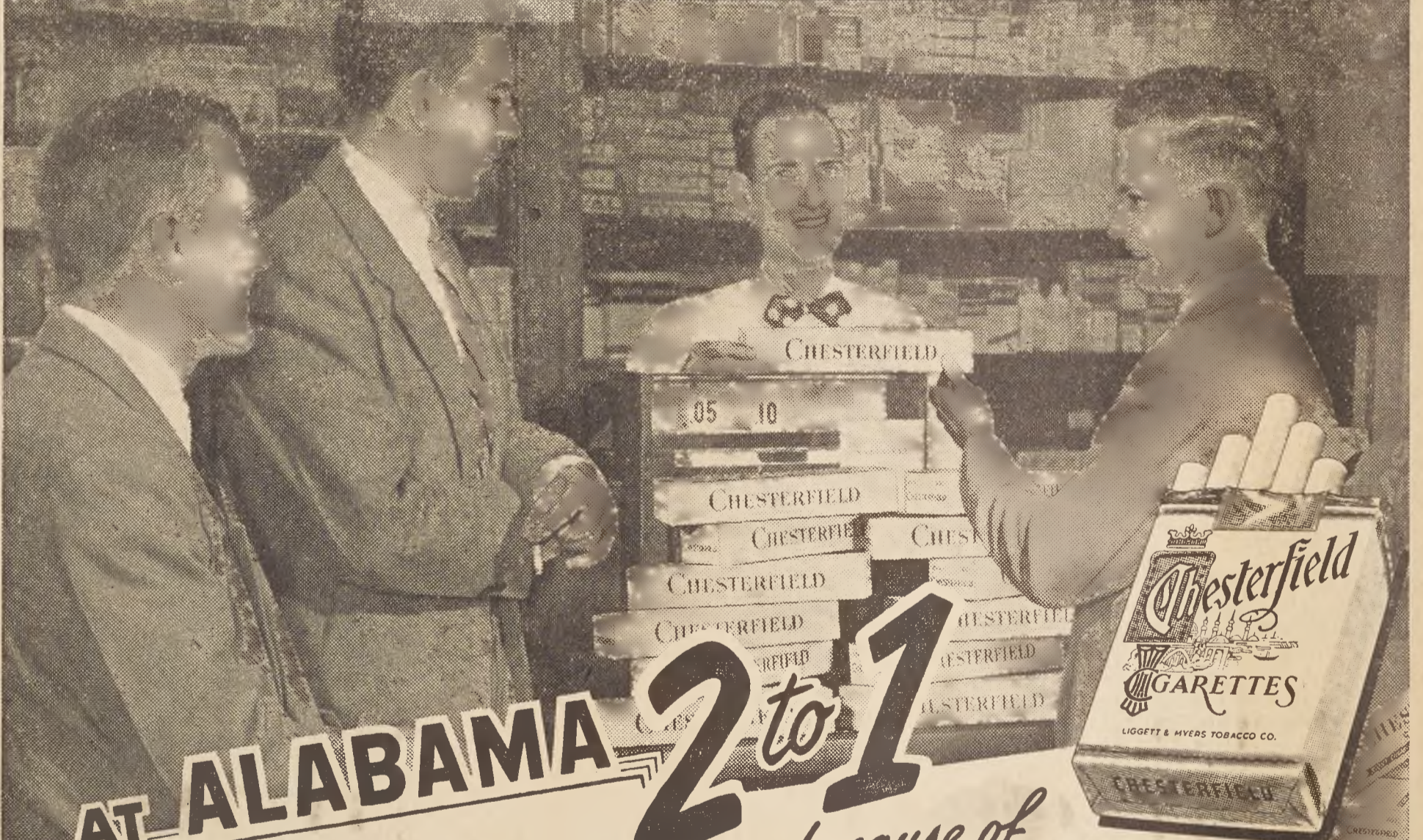
NO WAITING

### WASHERETTE, Inc.

1122 S. Main at Waughtown

Phone 3-3303

## CHESTERFIELD—LARGEST SELLING CIGARETTE IN AMERICA'S COLLEGES



# AT ALABAMA

# 2 to 1

Bama Drug Co.

*We certify that Chesterfield is our largest selling cigarette by 2 to 1*  
SIGNED *H. J. Myer* PROPRIETOR

because of **MILDNESS**

Plus **NO UNPLEASANT AFTER-TASTE\***

\* FROM THE REPORT OF A WELL-KNOWN RESEARCH ORGANIZATION

.. and only Chesterfield has it!