



Freshmen, Eleanor Lauck, Mary Vincent, Tripp Tate, Ann Schouler, and Jeannie Yager practice for their next hockey game.

# College Team Trounces Academy; Hockey Match Ends In 3-0 Score

Thursday, October 31, the Salem College hockey team scored a 3-0 victory over the Academy. The three points were scored in the first half. By the second half, the

Academy tightened its loopholes, and although no points were made by them, the college team was kept from further scoring. In the starting lineup were Julia

Whaley, Mary Vincent, Ann Schouler, Georgenne Reid, Tonya Freshour, Betsy Smith, Wendy McGlenn, Elsen Rutgers, Bebe Anderson, Eleanor Lauck, and Dabney Kelly—with Elsen Rutgers officiating as the newly-elected captain.

The next games for Salem are with Wake Forest and Catawba College.

# Representative Poll Shows 90 Per Cent Of Students Satisfied With Regulations

By Allison Pollard

A poll was taken this week among a representative group of students in order to determine the degree in which the student was or was not satisfied with the social and academic regulations of Salem.

The results indicated that 90% of the student body were, in general, satisfied with the social regulations and thought that the restrictions placed upon them were reasonable. One hundred per cent thought that the academic regulations were reasonable.

However, when asked if there was one particular rule which they would like to have changed, 50% answered in the affirmative. The majority of these were dissatisfied with the regulation forbidding

underclassmen to drive in Winston-Salem and the regulation regarding apartments in Winston-Salem.

Other students indicated dissatisfaction with the regulations denying students the privilege of smoking in their rooms, rent cars, and traveling alone in a car at night. Still other girls thought that underclassmen should have more overnights and that the curfew should be 1 a.m. on Saturday night.

The general satisfaction with social and academic regulations is an excellent example of the way in which the administration and the student body work together and cooperate for the best interests of both.



Mr. Donald C. McLeod, Salem's new biology teacher, takes time out from classes to study a microscope slide.

# Donald C. McLeod Comes To Salem From Michigan

By Sarah Rupprecht

Donald C. McLeod, Salem's new biology professor, is a native North Carolinian from Brevard. He came to Salem from the University of Michigan where he completed his M. S. degree in biology last year.

Mr. McLeod's interest in biology began with an enjoyment of the out-of-doors. He graduated from Guilford College in 1953, with an A. B. in physical education and a minor in biology.

During the summer of 1960, Mr. McLeod studied at the biological station of the University of Wisconsin. For the following two summers, he studied at the University

of the South (Sewanee). During these summers and last year at the University of Michigan, he held National Science Foundation Grants. He is planning to complete his Ph.D. in botany at the University of Michigan.

Mr. McLeod says he enjoys teaching here this year, and feels that there are students who are interested in learning at Salem.

# Sociology Class Name Qualities Of Ideal Spouse

What qualifications are Salem girls looking for in future husbands? This question was answered last week by 33 seniors in Robert L. Wendt's Marriage and the Family class.

Students were asked to pick the six most important characteristics they would like to have in a mate. They were given 11 qualifications and were asked to select their top five.

A high moral standard is the first characteristic this class is looking for in a future spouse. Other qualities are pleasing personality, high native intelligence, emotional stability, and same religious beliefs. The sixth qualification is economic security.

## Printing Plates



FOR SCHOOL NEWSPAPERS YEARBOOKS PROGRAMS

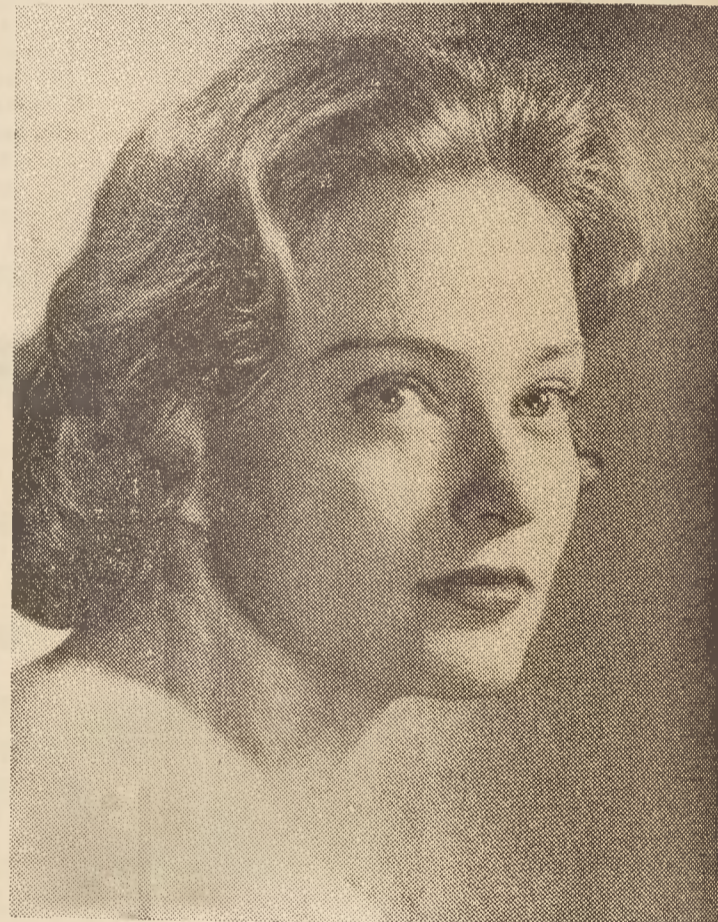
COLOR-PROCESS PLATES

Let our experience solve your problems.

PIEDMONT ENGRAVING CO. PA 2-9722 WINSTON-SALEM, N. C.

# Grigg features...

Pam Truette



A senior . . . lives in Biting . . . French major . . . pinned . . . May Court personality . . . from Albemarle, N. C.

and featured by Grigg

# K & W CAFETERIAS

3 Locations

- Downtown 422 Cherry St.
- Parkway Plaza Shopping Center

Soon also at

- Thruway Shopping Center

Open for your convenience

7 days a week

# Girls!

## Mr. Snavely Says:

If you are in a mid-semester slump we have just the things to cheer you up.

by Bitsie Richheimer

### MORRIS SERVICE

Next To Carolina Theater

Sandwiches — Salads

Sodas

"The Place Where Salemites Meet"