

Hockey Team travels
for two games.
See page 4.

The Salemite

Don't miss
the "Dynamic Duo."
See page 3.

Volume XLX

Salem College, Winston-Salem, N. C., Friday, November 1, 1968

Number 14

Troupe Performs Play "Cyrano" Cleverly, Simply

By Libby Cain

Quiet understatement marked the Inspirational Players' presentation of "Cyrano de Bergerac" Friday, October 26.

The troupe, under the direction of Charles J. Golden, who also played Cyrano, presented their adaptation of Rostand's tragi-comedy without sets, in simple costumes and with five other actors playing a total of eleven roles.

This mode of presentation required more effort from the audience and also provided opportunities for including the audience very effectively in the action. For instance, in the first act, which is set in a theatre, Cyrano spoke his first lines from a seat in the house and then addressed the audience in Hanes Auditorium as the theatre audience of the play. The actors entered, exited and spoke from the house at various points throughout the play.

Charles J. Golden as Cyrano played down the Gascon verve of Rostand's character and emphasized his philosophical aspect, particularly the bitterly ironic humor he finds in every situation up to his very death. This philosophic Cyrano was well conceived and well played.

Keith Ericson as Montfleury, Le Bret and the Duc de Guiche illuminated Cyrano from several angles. As the incompetent actor Montfleury whom Cyrano orders off the stage, he provided an opportunity

for Cyrano to make a grand gesture and to state his philosophy. As the captain Le Bret, Cyrano's close friend and confidant, he helped reveal the depths of Cyrano's character, and as De Guiche, Cyrano's enemy, he gave Cyrano a chance to display his brilliant inventiveness.

All three roles were well played: Montfleury with an inflated but

(Continued on page 3)

IRC Sponsors Student Ballot

By Cyndee Grant

A straw vote of presidential candidates sponsored by the International Relations Club was made Wednesday during assembly. The ballots issued contained the names of the three leading candidates for President, Richard Nixon, Hubert Humphrey and George Wallace, and their vice-presidential running mates, and a space for write-in votes.

The results are as follows:

Nixon	277
Humphrey	90
Wallace	10
Write-in	3

Interesting to note is the fact that previously in all the straw votes taken of Salem students before the presidential election, "As Salem went, so went the Nation."

Pierrette Players Make Fall Debut With "Of Thee I Sing" Production

By Jane Orcutt

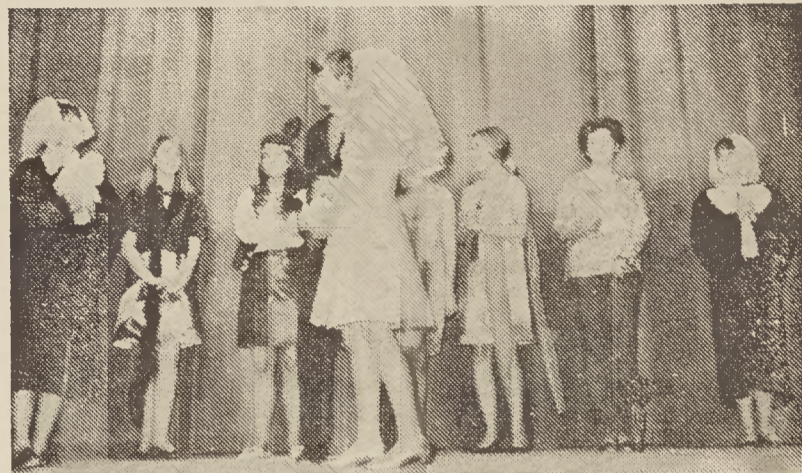
The Pierrette Players' production of George and Ira Gershwin's *Of Thee I Sing* opened Wednesday night with an entertaining performance. Despite a few opening night 'bugs,' the musical comedy was well received by the audience.

Of Thee I Sing is centered around the presidential career of John P. Wintergreen, played with zest by Flip Froelich. His platform is love, and Mary Turner, portrayed by Beverly Lancaster, is the object of that love.

Celia Watson and George Lee, as Diana Devereaux and Alexander Throttlebottom, provided hilarious complements to the president and his spouse. Also excellent were the performances of Carolyn Hughes, Dee Dee Geraty, Carolyn Garrett, Sally Rhodes, and Mary Davis as "The Committee."

Miss Nan Rufty's choreography added an interesting note to the production. Several dance numbers were included with the songs, with credit due Miss Rufty, Jane Cross and Lynn Messick as the principal dancers. Joy Miles cannot be overlooked for her excellent work with costuming. The various outfits added a great deal to the light-heartedness of the entire play.

The Pierrettes inserted several interesting effects into this production in addition to the song and



Flip "Winterbottom" Froelich marches Mary Turner, alias Bev Lancaster, down the aisle to matrimonial bliss to the dismay of onlookers. Last performances tonight and Saturday at 8 p.m.

dance routines. Projected slides are used in one scene quite effectively, and children of the faculty members provided a special attraction as Salemites attempted to match names with faces.

Peggy Hart and Hans Heidemann provided piano accompaniment for the play, and the North Carolina School of Self-Defense added "black belts" as an unexpected surprise.

Dr. Mary Homrighous, director of the production, is especially deserving of recognition. The coordination of a play such as *Of Thee I Sing* requires much effort, and her help and guidance paid off. *Of Thee I Sing* was extremely well received on its opening night and promises to be a hit during its four night run ending with Saturday night's performance.

Beverly Lancaster is also to be commended for her excellent staging of the musical numbers.

The Gershwin's *Of Thee I Sing* was written and produced in 1931.

Trustees Report New Bequests

Dr. Dale H. Gramley reported to the Board of Trustees yesterday at the annual meeting two bequests to the college. Each bequest is for \$20,000.

One bequest memorializes the former head of the Romance Languages Department at Salem, Dr. Lucy Leinbach Wenhold, and establishes a scholarship in her name. The bequest was made in the will of her brother, Dr. Robert Frederick Leinbach of Charlotte, who died early this year.

The recipient of the scholarship is to be a female student and a member of a Protestant Christian church. She must possess creditable scholarly abilities and have no other available financial means to obtain a college education.

A second bequest comes from the will of Mrs. Robert D. Shore and establishes a fund to be known as the "Mr. and Mrs. Robert D. Shore Fund." The income from this fund will provide for the maintenance of the Inspector's House, which houses the college administrative offices.

Mr. and Mrs. Shore financed the restoration of the building in 1936, which Mrs. Shore and her children further improved in 1967. Any amount in excess of that required by the Inspector's House each year will be used in support of faculty salaries.

Both Dr. Leinbach and Mrs. Shore were former trustees of Salem College and Academy.

(Continued on page 4)

Hendrick, Arrendell, Collins, Cocke Head Frosh Slate Of Offices

By Sterling Winstead

The Freshman Class assembled in Hanes Tuesday evening, October 22, to elect their class officers. Although this event always turns out to be a long, drawn-out affair, the Freshmen have chosen a fine slate.

Susan Hendrick, from Rutherfordton, was elected Freshman Class President. Susan was Treasurer of the Student Government her junior year and President of the Student Government her senior year in high school.

In her spare time, Susan loves to listen to music. She and her sister share a tape recorder on which they record all of their favorite songs. Susan also loves to play volleyball and to swim.

Right now Susan hopes to major in psychology. She says that Salem is academically as hard as she expected but "I know I'm getting a good education." Susan says one reason why she loves Salem is because "I'm getting to know everybody—that's what I like."

Susan has much confidence in the Freshman Class. She feels the class has "a lot of spirit and enthusiasm" and she was amazed at how well and willingly everyone worked together on Founder's Day.

Amy Arrendell, from Charlotte, is this year's Vice President of the Freshman Class. Amy was on her high school Student Council for three years and was secretary one year.

In her spare time Amy enjoys swimming and horseback riding.

With a possible major in English, Amy admits that Salem is hard. When asked how she feels about Salem, Amy replied, "Just great! Everything couldn't be better."

Being from Charlotte, Amy knows many girls who have come to Salem



New Freshman Class officers are Carol Collins, Secretary; Susan Hendrick, President; Amy Arrendell, Vice President; and Mary Cocke, Treasurer.

but she says Susan Kneec, Cam Voss, and Celia Chapman were her main advocates of Salem.

Referring to the office of Vice President, Amy says, "It's the biggest honor I've ever had—I can't believe it."

Secretary of the Freshman Class is Carolyn Collins, who hails from Tuscaloosa, Alabama. In high school Carolyn was President of the Latin Club, and a representative to Student Government.

Carolyn likes gymnastics and has taught other people "just for fun." She hopes to major in chemistry and eventually to extend her studies into pharmacy.

When asked how she felt about Salem, she smiled and said, "I love Salem. It's the most wonderful place in the whole world. All the

people are great, and friendly. I couldn't have made a better choice."

Treasurer of the Freshman Class is Mary Cocke from Wilmington. Mary went to high school at St. Anne's School in Charlottesville, Virginia, where she was President of the Athletic Association.

A true sports enthusiast, Mary enjoys all sports, especially tennis, basketball, riding, water and snow skiing.

Mary is interested in languages and hopes to major in Spanish. She admits that Salem is harder than what she expected but she feels that it is "quite challenging."

Happy that she came to Salem, Mary stated "It's one of the best decisions I've made in a long time." She also feels that "Salem has a lot to offer that I didn't realize it had."