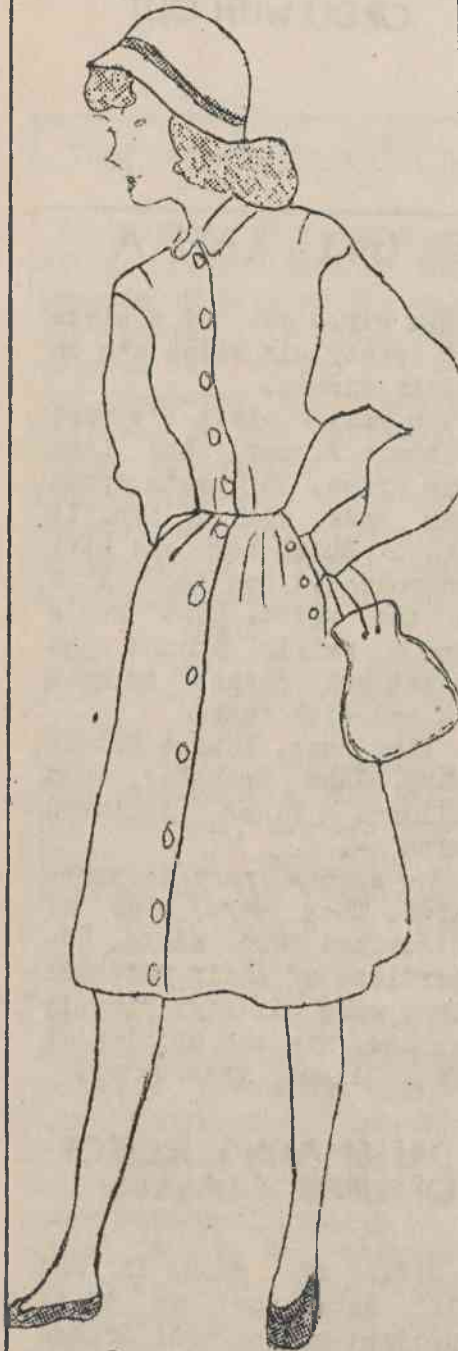


Quality,
Comfort,

Fashions, Fancies, and Frills



Style

I apologize to you, girls, for mentioning only boys in the plaid shirt parade. Mary June Brantley was first seen in a bright red and black plaid shirt reaching to the bottom of her dress. Discovering that its length was in the way, she appeared the next day with it cut off approximately eight inches and hemmed. Pansy Rae Bissette seems to have had the same trouble with her black and white plaid.

Tucked in bright plaid shirts have swept the school like an epidemic. The number of girls wearing bright plaids is about to exceed that of the boys.

Wearers of sweat shirts covered with names, jive talk, slang expressions, and figures of teens or animals clutter the halls between classes, before and after school.

Jean F. Glover leads the parade in wide belts. Her black belt is accented with jive expressions, music notes, and dancing boys and girls in white.

Patsy Lamm blossoms out with a silver bracelet with a rope effect given her on her birthday by her mother.

Just as I predicted, June Brantley has adopted the idea of wearing bells on her tennis shoes.

Why doesn't Mrs. Howard Farmer hang a mirror in her home room????

It would save her ninth boys a trip downstairs to the window panes of the doors at the ends of the hall. For everytime you see Leo Horner, Scott Lewis, Bobby Dew, Dayle Johnson, or Derl Pace they are blocking a door, combing their hair. The school really should raise money to hire a beautician to help them set curls and waves in their "goldy locks".

Just The Coat-dress

That You Need

For

Your Winter

Outfit

Obtainable

AT

Oettinger's

WILSON, N. C.

For a change, Mrs. Howard Farmer suggests wearing your lapel pin on the pocket of your suit rather than the shoulder.

Since the week of State Fair there has been a boom of gold basketballs. I fell for the same thing except that I was a late purchaser and had to settle with a football.

Styles repeat themselves every seven years. Proof--all the silver spoons being displayed.

Barbara Farmer