

*Tourney Efforts Fall Short*

# Cougars Smother Gryphs Hopes

The 1970-71 basketball season has come to an end for the mighty Gryphon cagers. However, the Gryphs refused to give up until the last buzzard had sounded.

The Gryphons captured undespited third place in the final regular season standings, with an impressive victory over Wilson. This is a distinct improvement over last year.

In the game against Wilson, the lead changed hands several

times before the Gryphs could pull it out. The Gryphs put on a display of sharp shooting as Mike Long and Lewis Hardy each poured in 20 points. Pete Thompson produced his best offensive show of the season as he rocketed five field goals from down-town. Roscoe Batts put on a show of good ball handling.

In the first round of the tournament, the Gryphons had the home court advantage against Greenville Rose. Greenville, with a 1-9 record in the conference was the conference's last place team, however, they had forced Rocky Mount into overtime during the regular season. The Gryphs came through the first tournament game with a 72-59 romping over Greenville. Long, with 21 points, and Hardy, with 19 points led the attack.

The real test was to come against the Goldsboro Cougars who were defending their division title from last year. Great suspense filled the Cougars gym as the Gryphons controlled the first tap. It looked as though the Gryphs were on their way as they jumped to an eleven point lead at 12-1. From that point on Goldsboro was on an upward surge. High scor-

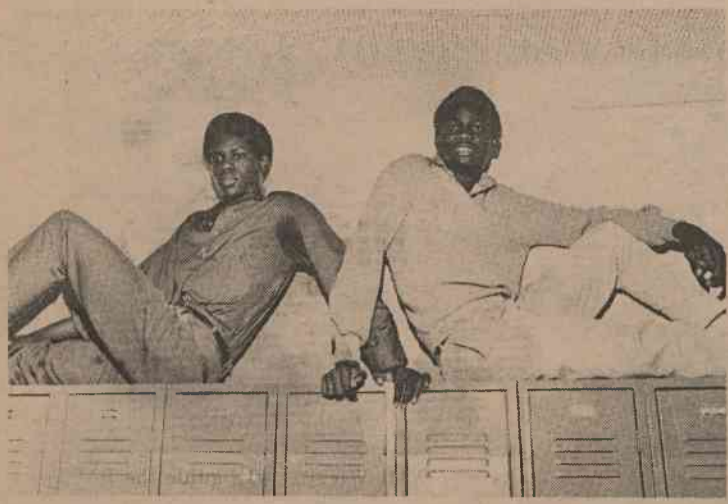
ing Ricky Holmes and Horace Thompson started holding the Gryphs to but one shot. The Cougars fought back to tie the game at 13-13. The Gryphons led at the half by a score of 35-31.

Coach Hicks' five, who led throughout most of the game, opened the second half with a similar spurt that opened the game. However, Thompson with 27 points and Holmes with 21 points, gave brilliant all-around performances.

With a loss by only two points to Goldsboro, the Gryphs can only look forward to next year, which with the fine returning talent, should be a truly great one.

## Gryphs' Stats

Player	G	Avg	Rb
Hardy	20	17.2	231
Speight	19	14.3	149
Howard	19	12.5	128
Bynum	20	8.1	91
Batts	20	8.0	68
Long	18	7.4	85
Thompson	19	4.5	23
Raynor	17	2.5	71
Bulluck	17	1.8	12
Marshall	14	1.4	16
Sparrow	10	1.2	9
Dozier	6	0.5	4



Dan Speight (1) and Cleveland Howard are the two "Super Sophs", who have given the Gryphon cagers a great boost.

## Supersophs--Speight And Howard

At the beginning of this basketball season, Coach Hicks was concerned about his lost of last year's stars in George Hamm and Mitchell Wiggins. With this thought in mind, he was forced to look with great expectations to whom was returning from last year and who would be coming new. The optimistic coach knew that he had some good offensive threats coming back, but he also knew that he needed more offense. There was much room for improvement in rebounding and defense if the mighty Gryphons were to compete in the Eastern 4A conference.

at 6'3" was the teams top percentage shooter from the floor and produced the teams highest single game output with 31 points against rival Goldsboro. He also boosted the team's rebounding and was deadly from the charity mark. Howard, at 6'4" was the teams best leaper. He was magnificent on the boards and was a terrorizing menace to whomever

tried to shoot over him. Both of these "Super Sophs" averaged in double figures, which was a carryover from last year's junior high school average of over 18 pts. each.

Many say that experience is the best teacher. If this statement is really true, I can only say that next year will be the "Year of the 24" for the Gryphon cagers.

## Coach Ramey's Hopes Up As Tennis Season Starts

RMSH's tennis team is looking forward to having a good season this year with veterans Woody Riddick, Reid Rhodes, and Frank Avent --to name a few--and newcoming netters Stephen Bennet and John Worsley. They are hoping to top last year's record of 3-7.

"I plan to work them hard," said tennis coach George Ramey.

Scrimmages have been arranged against Wesleyan, Atlantic Christian, and Lousburg colleges. In conference play, Raleigh Broughton, Wilmington, and Goldsboro high schools are expected to be the toughest contenders. However, Coach Ramey feels that we will be able to contend with the best of them. He realizes, too, that there is a lot of room for improvement.

"Tradition is the one thing that is hurting tennis," he said. By this, he is implying that there is a lack of interest in the community and in the system of the game is diminishing. He also explained that "lessons and clinics for young kids, and a junior high program are just a couple of things that would greatly improve the high school tennis program."

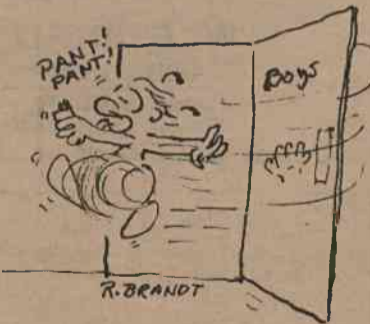
Also, in the past, attendance at tennis matches has usually been low. Coach Ramey pointed out that having an audience

always gives good moral support for a team.

Another problem plaguing tennis has been a lack of finances. The coach indicated that since the Atheletic Department only provides money for tennis balls for our home games, we have had to seek help from the individual players and others.

Coach Ramey has a good background of experience in both playing and coaching tennis. He has played with many different teams and, before returning to Rocky Mount, coached in Asheboro, N. C.

Tennis is a sport which needs your support and interest as spectators. As the spring sports begin, we are asking you to go out and back your tennis team. The GRYPHON Staff would like to express a preliminary Good Luck to the different teams participating in spring sports.



Pete Thompson (no. 14) attempts to block shot against Greenville in first game of tournament.

## \$ Inflation \$

Greenbacks stacked high  
Inflation flares  
Up, up, up in our nation.  
A Lincoln values now at 48c.  
Mountains of silver  
Seas of green . . .  
Gimmee more, more, more . . .  
Will the U. S. Spend Itself poor?

## ENGLEWOOD BRAND MEATS

MANUFACTURED BY Z. B. BULLUCK, INC.  
M.C.A.A. - P. 28 ROCKY MOUNT, N. C.

Estab. 1904

## Simmons Cabinet Shop

CUSTOM MADE KITCHEN CABINETS  
ROCKY MOUNT, N. C. PHONE 442-2803

## THE REMNANT SHOP

"Sew & Save"  
Hiway No. 64 West at Englewood  
Rocky Mount, N. C.

## JOYNERS Athletic House

Sporting Goods

124 Tarboro St.  
446-6159



## Knox Porter Nursery

ROCKY MOUNT, N. C.

ORNAMENTAL SHRUBS • WHOLESALE & RETAIL

Highest Rate On Savings At

## FIRST FEDERAL

Savings & Loan Association

116 S. FRANKLIN STREET

COMPLIMENTS OF

## Public Office Service

109 S. MAIN ST.



TRY REFRESHING

## SUN DROP

Raleigh Rd.

GI 2-1422

