

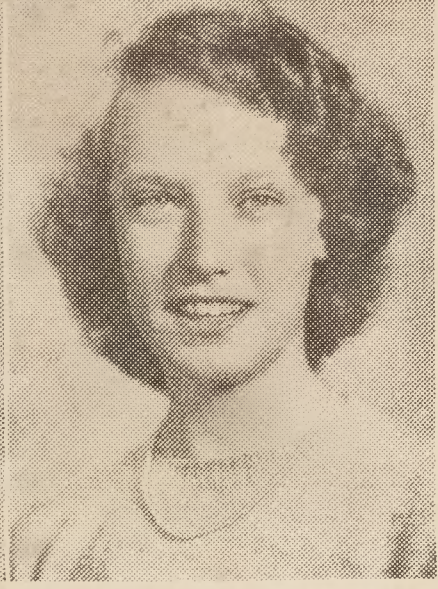
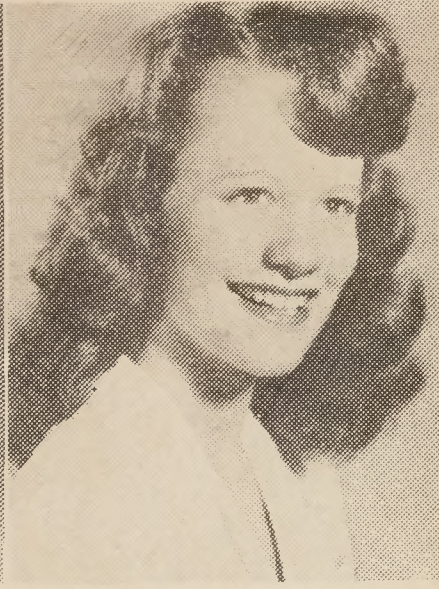
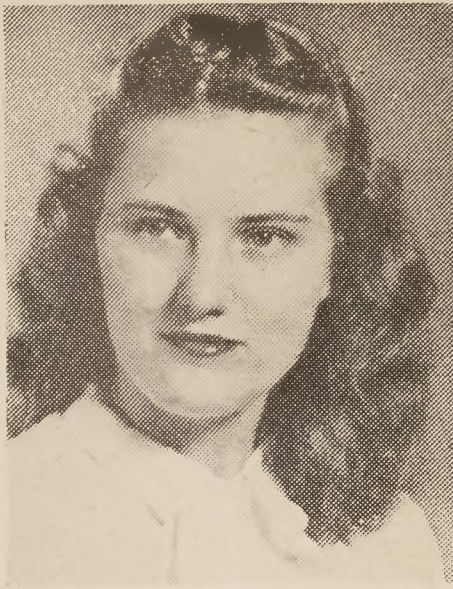
### SOCIETIES PLAN ANNUAL PLAYS

Each year the societies compete with each other in a short one-act play presented in the college auditorium, and this year these plays, together with the freshman play, will be presented on the night of March 15. In the past, this cup has been passed from one society to the other, but the tradition is that three straight wins entitles complete possession of the cup. Nancy Gates, president of the Phi society, has selected a Samuel French production of a tragedy entitled "Riders to the Sea." The setting is in the Aran Islands in Ireland, and the story is of a woman's inward conflict between mental happiness and loneliness. Virginia Holcomb, Astro president, has chosen another tragedy entitled "Ax-teca." The setting of the play is in Mexico. The story presents a struggle between a girl and her sister over the love of a man.

#### ELECTIONS

(Continued from page one) in the capacity of social vice president of B.S.U.

Margaret has done work on various publications and served on various class committees, been an Astro marshal, taken part in various musical activities, and has worked on the S. G.



Recently elected to fill the presidency of the three major campus organizations are Gloria Mayer, president of the Baptist Student Union, Frances Thompson, president of the Student Government Association, and Harriet Neese, president of the Athletic Association.

### Club News

#### SOCIOLOGY CLUB

The Sociology Club held its regular meeting in the Hut at 6:45 p.m. on February 18. Mrs. Elizabeth Vaughan, graduate student of sociology at Carolina and former professor in several Far Eastern universities, spoke on the development of culture patterns in a Japanese concentration camp in the Philippines.

#### COLTON ENGLISH CLUB

The Colton English Club met Wednesday night, February 12, in the Browsing Room. The meeting was called to order by Jean Branch. The program consisted of a talk on "Dress in the Elizabethan Era" by Miss Jennie Hanyen.

### EFIRD'S DEPARTMENT STORE

RALEIGH, N. C.



"A good place to shop for those who like to save money"

*Jean's of Raleigh*

### WELCOME STUDENTS

Shop at Raleigh Gift Shop

507 Hillsboro Street  
Phone 5402

### Survey

Recently a reporter began a survey of girls who like the monotony of "going steady." In a later issue, tabulations will be made and conclusions will be drawn. Those printed in bold have even gone so far as to get engaged.

- |                    |         |
|--------------------|---------|
| Lorene Adams       | Henry   |
| Frances Alexander  | Bob     |
| Doris Allen        | Charlie |
| Martha Allen       | John    |
| Unice Andrews      | Connell |
| Jean Arthur        | Charlie |
| Kitten Ashcraft    | Ted     |
| Sunshine Bellamy   | Bobby   |
| Christine Bordeaux | Bill    |
| Jerry Bostic       | Paul    |
| Geraldine Burgess  | Bill    |
| Aileen Cain        | Leonard |
| Sallye Carraway    | Chris   |
| Doris Carroll      | Buster  |
| Tula Cavaleris     | Steve   |
| Dot Clarke         | Francis |
| Madelyn Clinard    | Jack    |
| Dot Childress      | Frank   |
| Edith Cooper       | Charlie |
| Meg Creech         | Ralph   |
| Evelyn Crumpler    | Ben     |
| Joan Drake         | Gene    |
| Jeanne Dickens     | Joe     |
| Ruth Eller         | Bill    |

- |                   |           |
|-------------------|-----------|
| Addie Elliot      | Byrd      |
| Betty Fox         | Bill      |
| Jean Fleming      | Harry     |
| Sara Fleming      | Bill      |
| Jetta Funderburk  | Graham    |
| Madge Futch       | "Weenie"  |
| Jean Gaddy        | Don       |
| Nancy Gates       | Donald    |
| Stenette Graham   | Troy      |
| Katherine Griffin | Worth     |
| Jean Griffith     | Percy     |
| Arlene Hall       | Bill      |
| Lib Hardison      | "Blackie" |
| Trudie Harris     | Wendell   |
| Miriam Hill       | Charlie   |
| Emily Hines       | O. G.     |
| Virginia Holcomb  | Everette  |
| Frances Hollis    | Paul      |
| Esther Hollowell  | Bob       |
| Betty Horton      | Bill      |
| Mildred Hoyle     | Cohen     |

(Continued next issue)

#### FRESHMAN FROLICS

(Continued from page three)

applause, here's some for Alice Tuttle, who has, for the past six months, been doing a swell job as captain of the freshman basketball team. Why she managed to polish up a 'nuff Six to have weathered the senior's swim in the four

#### Shirley Says . . .

### "TURN IT OFF"

Maybe it's not your favorite radio program—but just now, don't yell "Turn it off!" On an ordinary day you get up at 7:15, switch on your radio, and crawl back under the covers to the tune of "Give Me Five Minutes More." Finally just before "Tempus Fugit" leaves the air, you open both eyes to receive that mild dose of corn in the form of a joke(?) like "Have you heard about the little hole? Well - well - well!" Read it aloud—it's even more senseless that way.)

Then you have a free period before lunch. You like to relax? Good! do it to one of the best musical programs on radio—the Fred Waring Show. You hear classical, semi-classical, and the latest ("Open the Door, Richard") songs all in one well planned and beautifully performed program. Anybody who doesn't listen to Fred's program is really missing a treat.

Afternoon comes—"soap operas!" Now which comes first "Young Widder Brown" or "Just Plain Bill?" Oh, I forgot—"Take a tip from Tom, and go and tell your Mom" that "Superman" and "Buck Rogers" are fleeing from "The Shadow"—and guess where they found refuge? In "The Hermit's Cave," and "Believe it or Not" they lived "The Life of Riley" until the "Man on the Street" gave a lecture on "Your Health and You!"

Jack Benny and the "Sports Parade" soothe your wounded vanities and we begin to think that all programs might not be bad—then the bottom drops out! Immediately following that, to be commended for her conduct in this type of progressive thought into it) be a program radiating a glow as mellow as the moon under the direction of a character (man or mouse?) called Beard? With this thought, life seems too, too dreadful. The solution? Oh! Turn it off!!!

worried during their recent skirmish with the freshmen!

When the Chamber of Commerce dinner came off last week, four class members were taking part in entertaining the business folks of the capital city. Joyce Bandy, "Cindy" Renner and Dot Childress did some snappy vocalizin' on "Chattanooga Choo Choo" and "Choo Choo Ch' Boogie." Pianist Juanita Wall accompanied the act.

### CANTON CAFE

Air Conditioned



408 Hillsboro Street  
RALEIGH, N. C.

PHONE 9224

### AMBASSADOR THEATRE

Now Playing  
"CALIFORNIA"  
In Technicolor  
with RAY MILLAND

Sunday-Monday-Tuesday  
"SISTER KENNY"  
with ROSALIND RUSSELL  
ALEXANDER KNOX

Starts Wednesday, March 5  
Walt Disney's  
"SONG OF THE SOUTH"  
In Technicolor

Friday-Saturday  
"BELOW THE DEADLINE"  
with  
WARREN DOUGLAS

Starts Late Show Saturday Nite  
and Sunday-Monday-Tuesday  
"WICKED LADY"  
with  
JAMES MASON  
MARGARET LOCKWOOD

Wednesday-Thursday  
"BETTY CO-ED"  
with  
JEAN PORTER

### STATE

### GREEN GRILL

INC.

324 South Salisbury Street

EXCELLENT

FOOD

"Always a Good Steak"

For Drugs and  
Prompt Delivery

DIAL  
7741

The Dependable  
Drug Store

STATIONERY : COSMETICS

### STATE DRUG STORE

2416 Hillsboro Street



### Have a Coke

Serve  
**Coca-Cola**  
at home

BOTTLED UNDER AUTHORITY OF THE COCA-COLA COMPANY BY  
THE CAPITAL COCA-COLA BOTTLING CO., INC.