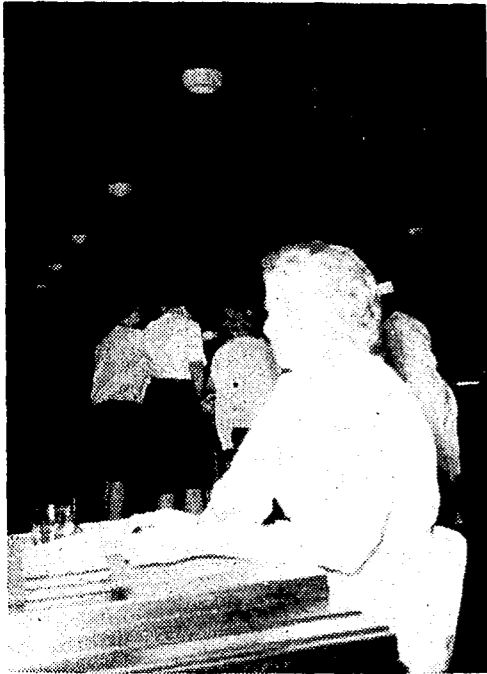


Social Events Center in Cafeteria; Meal Planning Takes Large Staff

By JANE WORRELL

An integral part in the daily lives of Meredith Students is centered in the college dining room. Not only is it the place where the girls regularly gather as a student body, but it is the social center for many functions and traditional activities. The dining room personnel are asked to contribute in helping with such events as the society suppers and joint breakfast, the Corn Huskin' Bee, Play Day, and the annual Christmas dinner. In order to carry out the themes of the suppers for various organizations, the cafeteria staff by planning menus with the girls is cooperative in meeting the requests of the students.



Counting heads at lunchtime is Mrs. Harriet Holler.

The effects of the dining room personnel are evident particularly in the elaborate and elegant Christmas dinner which has become an annual event. Because the staff feels that this function contributes to the social life of the college, they endeavor to offer a different and interesting cuisine. Preparation for the banquet begins several weeks in advance. During the period preceding the event, the dietitian and her staff are responsible for planning the decorations, obtaining the Christmas trees, covering trays with aluminum foil, and working out all details of service. One week be-

Downs Attends Meet For Art Educators

By CLARENE ROBERSON

Dr. Arthur Downs of the Meredith art department has recently returned from the biannual convention of the National Committee of Art Educators. The convention was held at the Museum of Modern Art in New York City and was attended by art educators from primary schools through college level, who came from as far away as Hawaii.

Lasting one week, the meeting featured speakers and seminars for introducing new art ideas and methods to be used in art education. One day of the week was devoted to museum employees; the remaining four days consisted of programs designed for art educators. An interesting topic relayed by one of the speakers was a comment on the American influence on post-war Japanese art. The emphasis placed by Americans on education has forced Japanese children to attend school until twelve years of age, thus eliminating a former practice of entering children into an apprenticeship at ten. Such a delay in beginning apprenticeship finds the children interested in other things and not as willing to absorb the teaching of their masters. The speaker expressed the opinion that the quality of Japanese art has been diminished through this practice.

fore the dinner the food is prepared and refrigerated. With the aid of diagrams of each serving table, Mrs. Bobbye Hunter, the dietitian of the college, meets with the staff and gives them directions pertaining to the serving and timing of the banquet. Having been a past dancing school owner and teacher, Mrs. Hunter compares the production and organization of such an event as the Christmas banquet to choreography. Drawing an analogy between the two, she says, "The night arrives — each person knows where his place is and what he is to do — the stage is set — the curtain is raised, and the show is on." Concerning the Christmas dinner, she explains that the dining room staff probably "gets more pleasure out of presenting it than the girls do by coming to it." Mrs. Hunter adds that she enjoys training the staff for the annual event, and they, in turn, enjoy trying something new.

Recent Improvement

In recent years, the dining room has undergone much improvement which has facilitated convenience for students as well as for the cafeteria employees. Having two lines instead of one, bus boys, new cooking ranges and equipment, and offering faster service, have helped to remedy many problems. Today, because Meredith has grown in the number of students but has not been able to expand all facilities to cope with the added enrollment, there are still certain areas which need improvement. In the realm of unforeseen events, the cafeteria faces other problems. Whenever person-

Robinson To Study At UT with Pay

By KAREN RAINES

Amy Robinson of Clyde, North Carolina is among the Meredith students planning a summer of study and work at universities and colleges throughout the country. Amy will spend six weeks during June and July at the National Defense Foreign Language Institute held at the University of Tennessee.

Amy, a senior, became interested in this project through her high school French teacher, applied at the National Defense Education Department, and was selected as a participant.

At the university, she will have no tuition fees and will pay only \$45 for housing. In addition, the grant provides a weekly salary of \$75. During the six weeks of training, Amy will live in a "French world." She will see foreign movies and French drama, celebrate French holidays, and speak French at all her meals.

Under the leadership of visiting foreign professors, she hopes to gain a better understanding of French culture while achieving a greater fluency in speaking the French language.



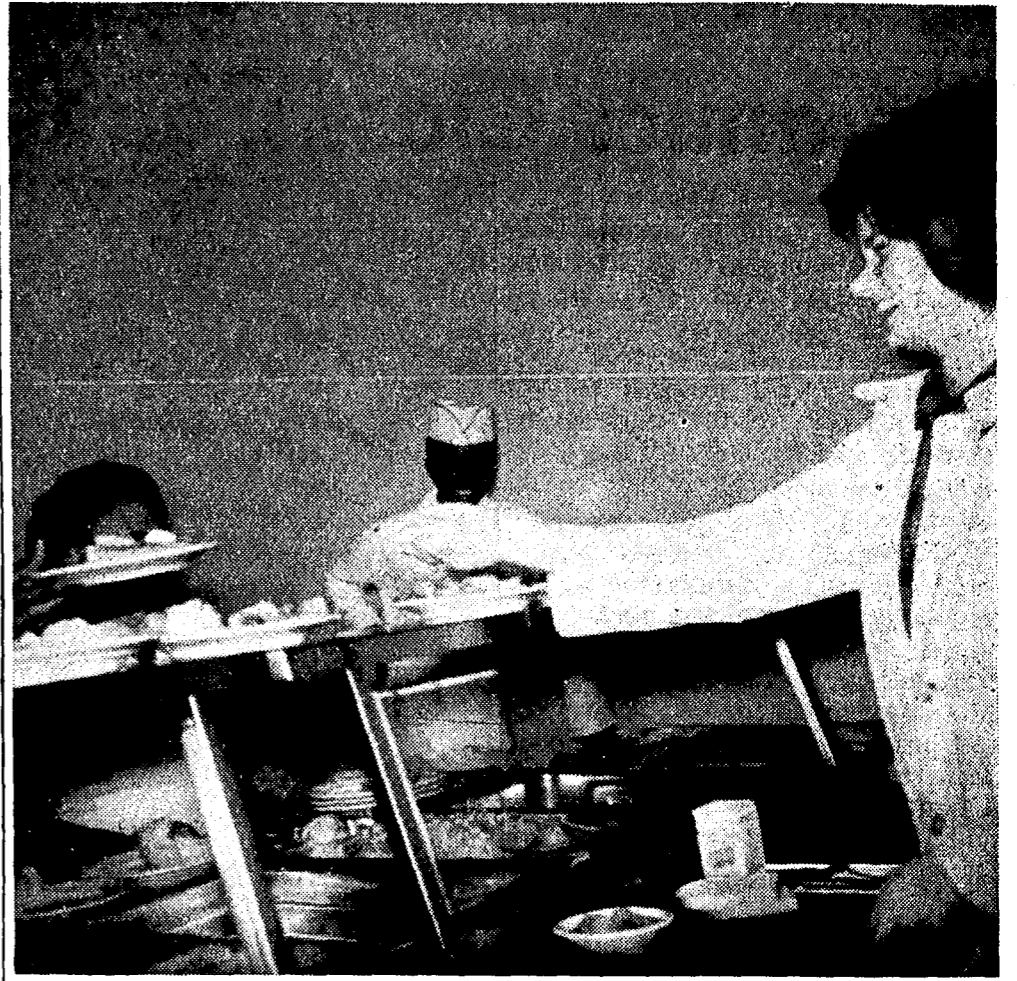
Amy Robinson listens to a French record as practice for her summer studies.

nel are absent, the help is, as a result, below the minimum; therefore, the people present must work twice as hard to prepare the meal. With a reduced staff, it is often necessary to make substitutions on the menus, for some dishes require more time and labor than is available. Often, a food shortage occurs when one choice of meat is more popular than the other.

Although the Meredith College dining room has, in relation to other colleges, a relatively large food allowance, it must operate under a tight budget. According to Mrs. Hunter, there is "more expense in the operation of the dining room than in food cost alone." From the money which she is appropriated by the school, she must make allowance for, in addition to food, the costs of labor, equipment, replacement of dishes and silver (which students take to their rooms), linen service, paper goods, maintenance, and cleaning supplies.

A Varied Staff

The cafeteria staff is headed by Mrs. Hunter who is in charge of the "entire operation," including supervision, hiring and dismissal of personnel, food planning and purchasing, sanitation, and maintenance of equipment. Since an early age, she has maintained a keen interest in foods. Mrs. Hunter is assisted by Mrs. Harriet Holler, the assistant dietitian, who is her food's expert. Serving as dining hall hostess is Mrs.



Betty Ipock gets a plate with "lots of apples," while Georgia waits for the next order.

Frances Thorne who supervises the student waitresses and has complete authority over the dining hall. A fourth member of the cafeteria managerial staff is Mr. A. B. Hilley who is in charge of the storeroom. It is Mr. Hilley who must receive merchandise and refrigerate it. Of the numerous dining room helpers, Mrs. Hunter comments that they are one of the "most loyal staffs and one of the most interested groups of people with whom she has ever worked." She feels that the student relationship with the personnel is good and that the staff ap-

preciates the attention and concern of the students. The main concern of the entire dining room staff is to please the students and to serve nutritious as well as attractive and appetizing foods. Mrs. Hunter states that the staff welcomes suggestions from the students. Since the meals are planned to please the girls, the personnel wish to be told what dishes are popular. Mrs. Hunter states, "the students help to keep us on our toes, and as long as they do it in a ladylike way, we are glad to hear anything concerning food service."

Summer Plans Reveal Many Trips

By FRANCES GARRETT

Soon suitcases will be crammed to the "nth" degree as Meredith professors and students welcome the summer to realize exciting plans for traveling and working. These brief itineraries will serve as examples of a few of the plans made by professors and students.

Leaving in June, Miss Lucy Ann Neblett will travel by bus with a group of students to Saltillo, Coahuila, Mexico. The students, among whom will be Ann Baggett, an incoming freshman, will live in private homes and attend classes conducted in Spanish at the Inter-American University in Saltillo. Every Saturday during the five weeks in Saltillo there will be excursions sponsored by the university to nearby places of interest. The group will spend one weekend in Mexico City seeing the Palace of Fine Arts, the Aztec pyramids, the floating gardens, the National Cathedral, and the Shrine of Guadalupe. Miss Neblett will return to Raleigh in August.

Leah Rose Williams will also spend six or eight weeks this summer in Mexico. She will be visiting relatives, studying Spanish, and sight-seeing.

See the USA

Traveling in the United States will be Dr. Susanne Freund and Mrs. Harry Cooper. Dr. Freund will visit her son in Texas. She will travel through New England after she bids farewell to her daughter: who will sail with her husband to India this summer. Mrs. Cooper will visit relatives in Kansas City Missouri, and plans to take her grandchildren through the mountains nearby.

Ann Waters will leave in the middle of June for a month of traveling to the West Coast. Ann's bus tour includes Salt Lake City, Las Vegas, Pike's Peak, Hollywood, and San Francisco. Ann will return in mid-July.

Summers in Europe

The eleventh of June will see

Nancy Williams, Martha Spence, and Clabron Barbee off to Europe. These girls will be on a tour sponsored by the National Student Association for Educational Travel. Sailing with twenty-two other American students, Nancy, Martha, and Clabron will reach Southampton, England, on June 19. The group will tour England, France, Switzerland, Italy, Germany, Holland, and Austria. Guides for the group will be professors and graduate students from the countries in which the group will travel.

Throughout the tour there will be supper-parties where the American students will meet foreign students. The tour will end on August 12, when the group returns to the United States by plane.

Also going abroad are Carol Andrews and LaRue Pearce. They will fly on June 19 to Montreal, Canada. From Montreal they will sail on a commercial tour to Scotland. The itinerary for the nine-weeks tour includes traveling in Scotland, England, Holland, Belgium, Germany, Switzerland, Italy, Austria, France, Monaco, Spain, and Portugal. Carol and LaRue will return on the "Queen Mary."

Plans for Summer Work

Quite a few Meredith girls will spend the summer working at resorts and camps. Betsy Rose Long will work at Glacier National Park in Montana as a kitchen girl. Work-

ing as waitresses at Nags Head will be Jenny Winfield, Adalia Wiggs, and Sandy Harrill. Ruth Ellen Johnson will be a waitress at Myrtle Beach. Working as a waitress for her second summer, Jane Eaton will go to Ogunquit, Maine, for the months of July and August.

Camp counseling will consume the summer for several Meredith girls. Margaret Houghton will be the assistant director of a Y.W.C.A. camp near Danville, Virginia. Jane Hendricks will be riding instructor at Camp Ridgecrest for boys near Asheville, North Carolina. Working at a Moravian church camp near North Wilkesboro, Donna Dull will counsel junior-high aged children. Also working at a coeducational camp will be Bucky Williams. In a family camp-resort on the Connecticut River near Fairlee, Vermont, she will be a counselor for children seven to twelve years old.

LISTEN Fund Drive Concerns Key Deposit

The BSU has suggested that each student contribute the dollar she will receive from her room key deposit to the LISTEN program since the goal of \$700 for the year has not been reached. The quota can be met if four hundred students donate their dollars.

The \$700 will be used as follows:

\$500.00	71%	State Budget
70.00	10%	Ed Reynolds
105.00	15%	World University Service
28.00	4%	Expenditures & Publicity

The money given to Ed Reynolds, an African student, is to help pay for his expenses while attending Wake Forest College. The contribution to the World University Service is used in rebuilding and improving colleges and universities in underprivileged countries of the world.

Exam Schedule

MWF	3:00	Sat.	9:00
MWF	8:25	Sat.	2:00
MWF	9:25	Mon.	9:00
MWF	11:05	Mon.	2:00
MWF	12:05	Tues.	9:00
MWF	2:00	Tues.	2:00
TTS	11:05	Wed.	9:00
TTS	12:05	Wed.	2:00
TTS	2:00	Thurs.	9:00
TTS	8:25	Thurs.	2:00
TTS	9:25	Fri.	9:00