

May Day Weekend Highlighted by Fun, Festivities and Guests

Queen of May Julia Butler reigned over a whirl of activity during the week-end of May 1-2. High school students who will be attending Meredith College next fall were special guests of the college for the week-end. Joyce Canady, chief counselor for 1965-66, was in charge of plans. Betty Webb di-

rected placement of guests and Janie Hocutt served as chief hostess. Freshman counselors for next year assisted with the hospitality program.

The annual May Day horse show began at one o'clock p.m. It featured beginner, intermediate, and advanced divisions, with trophies in

the saddle-seat and hunt-seat classes.

May Day Ceremony

The Queen and her court marched into McIver Amphitheater at four o'clock p.m. Queen Julia Butler reigned over May Day festivities. Maid of Honor for the occasion was Crystal Hartness.

Two representatives were chosen to represent each class in the May Court. Senior attendants were Carolyn Howell and Lucinda Swayne. Junior attendants were Betsy Carlson and Candace Welstead.

Martha Henderson and Toni McKinney were Sophomore representatives. Members of the Freshman class in the May Court were Carole Burris and Becky Dilling.

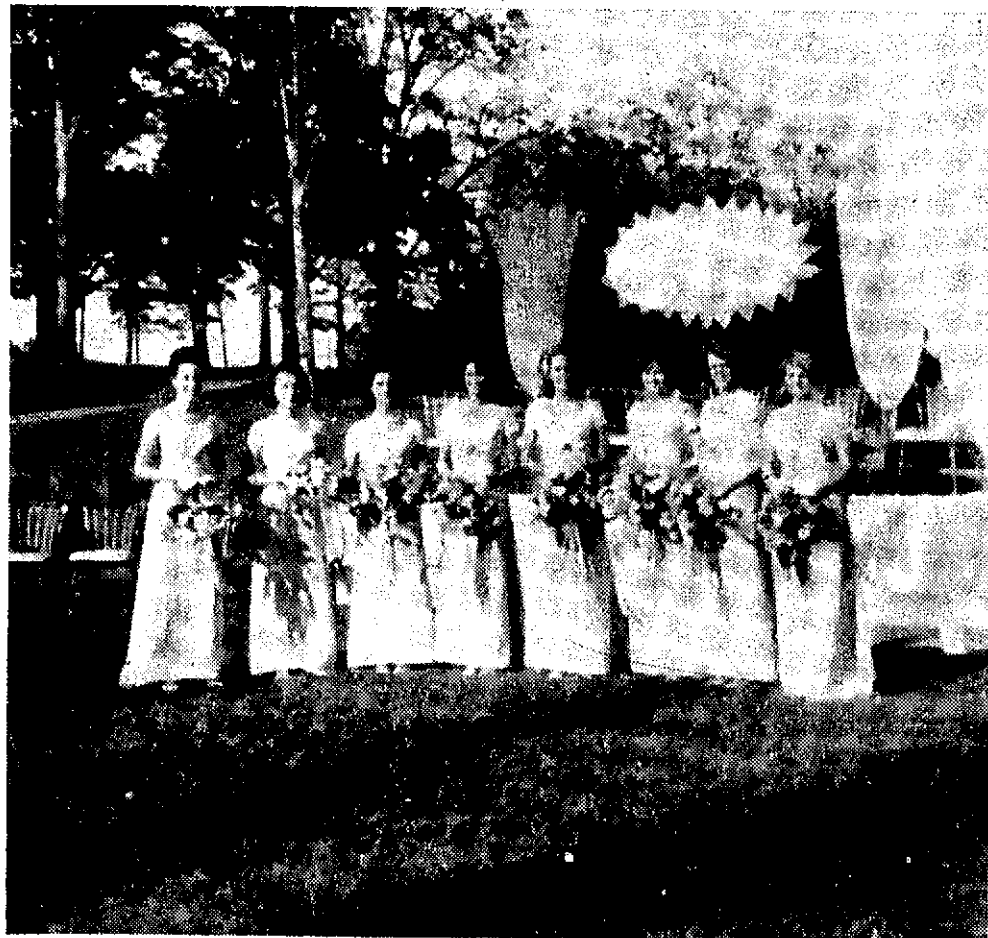
Marshalls for the occasion were provided by the Astro and Phi societies, serving Harriet McLoud Dixon, as College Marshall. Marcia Sned was chief of the Astro marshalls. She was assisted by Sarah Anne Poole, Benton Walter, and Molly White. Laray Williams, Jane Coleman, and Marilyn Carter served as Phi marshalls, with Lee Smith acting as chief.

Entertainment for the May Queen and her court was presented by modern dance classes and other Meredith College students under the direction of Mrs. Frances Stevens. The theme of the program was "Once Upon a Time." It depicted characters and stories from books with Granny Judy Hamrick relating favorite stories to faculty children. The finale was a May Pole presentation in which sixteen seniors participated.

Chorus Concert

On Saturday evening at eight o'clock p.m. Miss Beatrice Donley directed the Meredith College Chorus in a program of music of many varieties — including songs in French and German, some light songs, and *Porgy and Bess*.

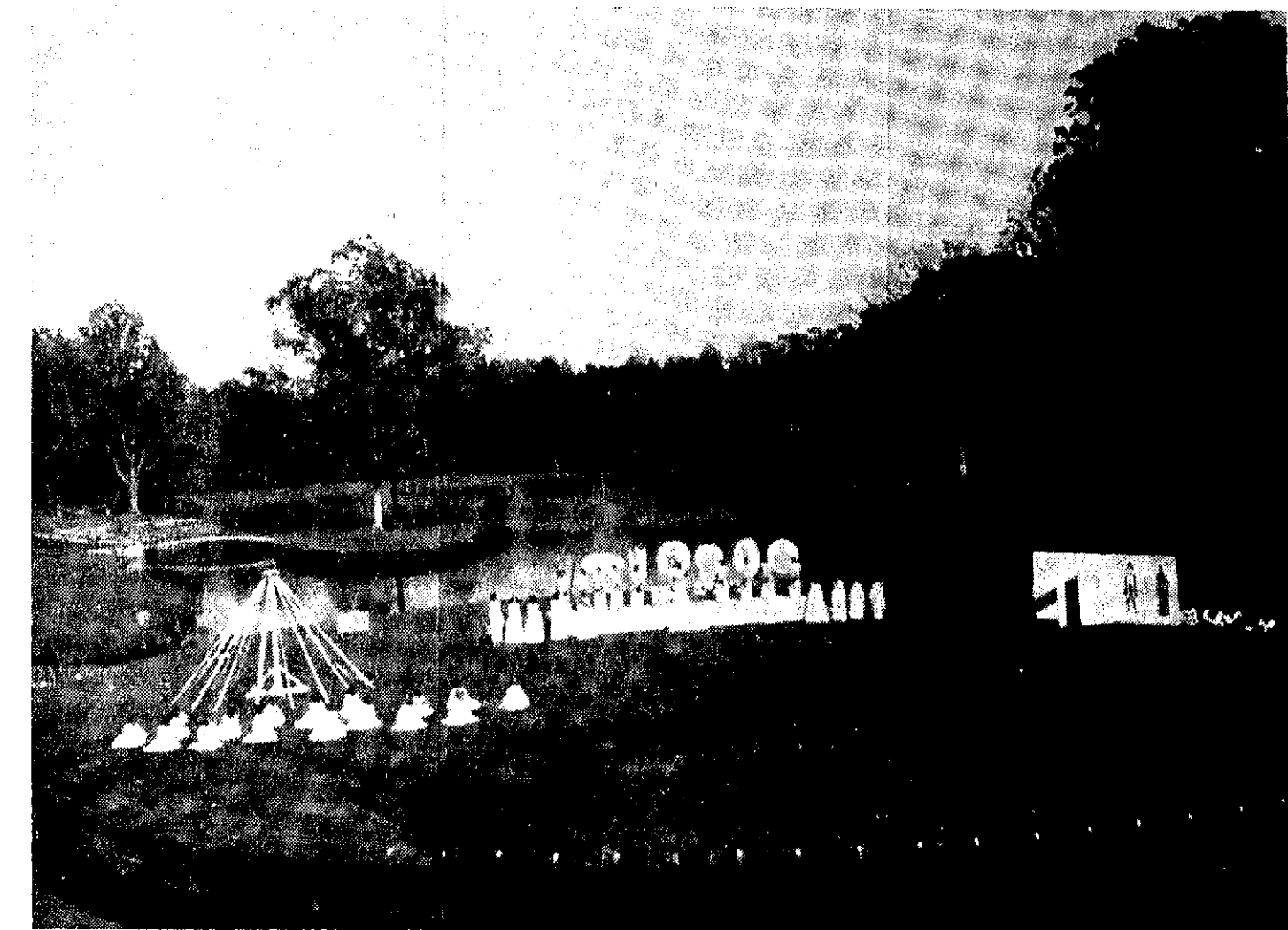
A reception for the guests of the college, their hostesses, and the College Chorus followed the concert. Anne Sparger was in charge of the May Day Reception.



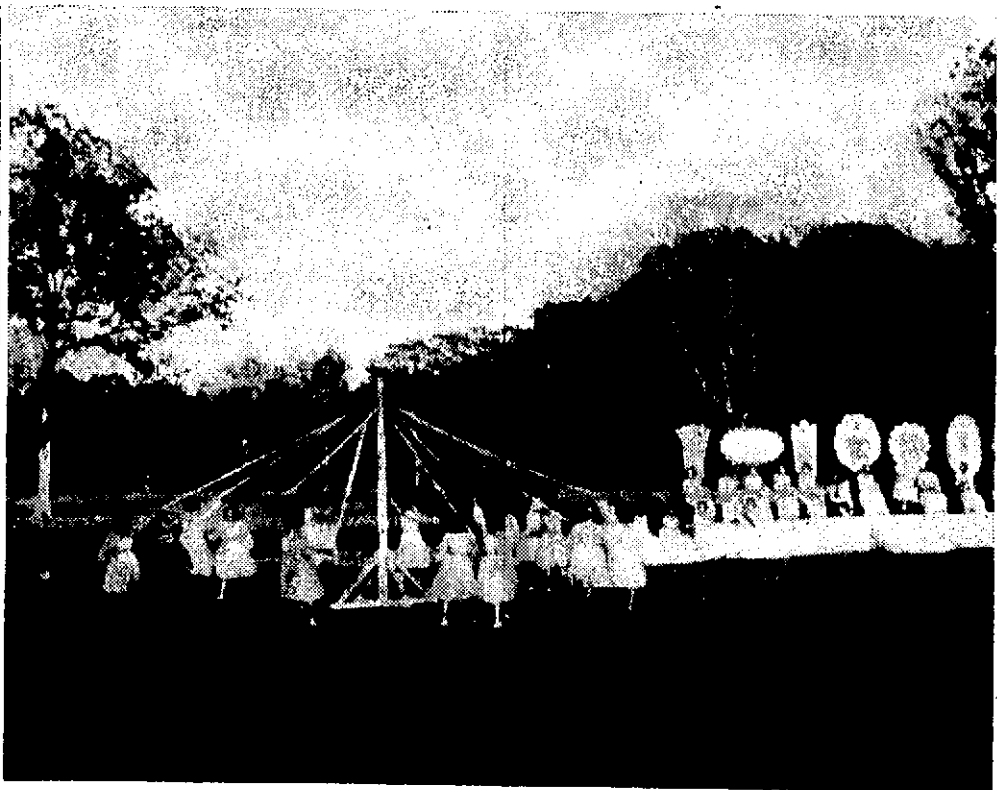
Class May Court attendants prepare for May Day activities.



The finale features the entire cast in a May Day dance.



The natural beauty of the amphitheatre provides a setting for May Day, 1965.



Co-ordinated seniors deftly decorate the traditional May Pole.



Mary Poppins comes to life from the pages of Granny's storybook.

Watch TWIG for
Feature on Retiring
Faculty Members

75 Student Teachers Placed In Raleigh and Wake County

Spring of '65 finds seventy-five Meredith Seniors presently student teaching in the local city-county school systems. Each of these girls completed a series of advanced education courses during the first nine weeks of the semester, and since that time they have been actively engaged in directing class activities.

Elementary Teachers

Thirty-five of the total are student teaching in elementary schools. These girls include: Mary Ann Ainsley at Murphy; Gloria Allen at Garner; Linda Arledge at Boylan Heights; Mrs. Loretta Banner at A. B. Combs; Patricia Berry at Boylan Heights; Mary Ann Britt at Barbee; Kay Buffalo at Garner; Anne Carraway at J. Y. Joyner; Sarah Carver at Frances Lacy; Janet Collins at Frances Lacy; Nancy Craig at E. C. Brooks; Diane Drake at Vena Wilburn; Jane Eaton at Barbee; Martha Franklin at Vena Wilburn; Susan Hagwood at Frances Lacy; Crystal Hartness at Longview Gardens; Phoebe Lassiter at Clarence Poe; Brenda Long at Fred Olds; Sandra Mayhew at Lewis Powell; Kay McCorkle at Frances Lacy; Martha McArthur at Eliza Pool; Harriette McLoud Dixon at Barbee; Sally Moore at Lacy and Barbee; Ellen Y. Morrison at Frances Lacy; Becky Parker at Frances Lacy; Pen Lile Pittard at J. Y. Joyner; Elizabeth Reavis at Frances Lacy; Corinne Savage at Wiley;

Nell Shelton at J. Y. Joyner; Gail Sheppard at Emma Conn; Betty Spence at J. Y. Joyner; Brenda Strickland at Clarence Poe; Jane Tudor at Aldert Root; and Mary Woodard at Longview Gardens.

Similarly the remaining forty have been placed in local high schools. These girls include: Barbara Koch at Daniels teaching art; Pauline Finan at Enloe, Nancy Buffalo at Apex, Sue Teachey at Garner, Lynn Myers at Wake Forest, and Lura Penney at Rolesville all teaching biology; Linda Simmons and Margaret Beard at Broughton, Jan Miller at Enloe, Cathy Ussery at Apex, Zona Carewan at Cary, Judy Cook at Garner, Shirley Rhyne at Millbrook and Josephine Tankard at Wendell all in Business; Maynette Regan at Knightdale and Martha Siston at Rolesville in French; Betty Ippock at Enloe, Cindy Swayne at Cary, Glenda Brown at Knightdale, Nancy Whitley at Millbrook and Brenda Petty at Wakelon in History; Carolyn Holliday at Enloe, Peggy Highsmith at Martin, Helen Smith at Morson, Pamela McCall at Apex, Carolyn Howell at Cary, and Ann Jones at Wake Forest in Home Economics; and finally Elizabeth Currin, Jane Dilday and Nileen Hunt at Broughton, Donna Dull at Enloe, Judy Strickland and Jane Guion at Daniels, Betty Jo Steele at Martin, Carol May and Pat Womble at Cary, Faye Jackson and Jessica Adams at Garner, Martha House at Knightdale, and Louise Barrow at Wake Forest all in Math.