

THE TWIG

Newspaper of the Students of Meredith College

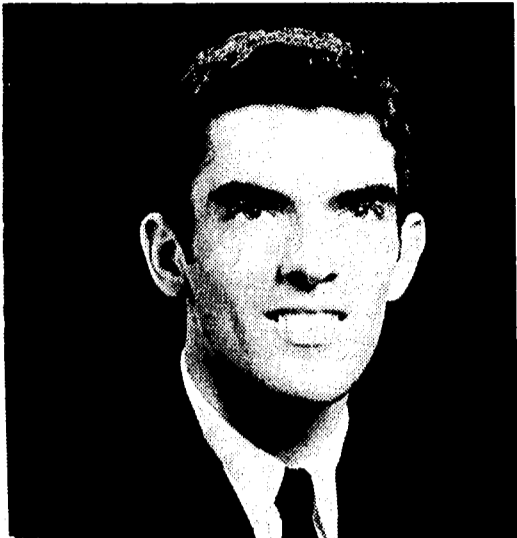
**What Do
Meredith
Graduates Do?
See page three**

**How Does
the TWIG
Rate?
See page six**

Vol. XLIII

MEREDITH COLLEGE, RALEIGH, N. C., NOVEMBER 21, 1968

No. 5



Lou Pearce, top row at left, will star in "The World of Carl Sandburg" with John Becton, top right, Bobby Bohannon, bottom left and Alice Smith. The Hut will become a playhouse at 8:00 Nov. 22 and 23.

Poet's Works to Be Performed

Group Sings Sandburg

Norman Corwin's play, "The World of Carl Sandburg," a singing trip from the cradle to the grave will be performed Nov. 22 and 23 at 8 p.m. in the Hut. The play, composed of poems by Sandburg strung together by narrative material, is a collection of folk songs Sandburg made in his hoboing jaunts about the country.

The play, directed by Mrs. Ruth Ann Phillips, will be performed by

two girls from Meredith, Alice Smith, a senior, and Lou Pearce, a junior. Two boys, John Becton of UNC-CH and Bobby Bohannon of Wilmington College, complete the cast.

These students are part of a group sponsored this summer by the student department of the Baptist State Convention. They were trained for a short period at Meredith and then worked at various churches in the state.



Dr. Kreps

Lecturer Speaks On Work Concept

Dr. Juanita Kreps, professor of economics and director of undergraduate studies at Duke University, spoke here Wednesday night, Nov. 20, through the Concerts and Lectures Series.

Dr. Kreps spoke in 103 Joyner on "The Changing Concept of Work." An informal reception was held after the discussion. She also addressed the student body earlier in the day at chapel.

Among her other activities on the campus was a visit to an Economics 221 class and supper at Villa Capri with students.

Dr. Kreps, a native of Lynch, Ky., has received degrees from Berea College and Duke University and prior to her present position at Duke has taught at Denison University, Queens College and Hofstra College. She has also been honored as a Bryan Lecturer in Economics at the University of North Carolina at Greensboro, 1961-62 and 1962-63.

Her professional memberships include the American Economics Association, American Association of University Professors, American Association of University Women and Phi Kappa Phi. She is also secretary and member of the Executive Committee, Board of Directors of the National Council of the Aging.

Dr. Kreps is married to Clifton H. Kreps Jr., Wachovia professor of Banking at UNC-Chapel Hill. They have three children, Clifton, Laura and Sarah, who is a freshman day student at Meredith.

Radio Broadcasts Commence On Shaw University Campus

Editors Note: In an effort to further interinstitutional cooperation with other Raleigh colleges, the TWIG will periodically print information of interest to Meredith Students from news releases from these other campuses.

WSHA-FM, a new non-commercial education radio station, began broadcasting from the campus of Shaw University the week of November 11. WSHA-FM, a ten watt station, is expected to produce a signal that should cover most of the city of Raleigh at 88.9 on the FM dial.

WSHA has been established to serve the entire Raleigh community educationally and culturally as well as to train Shaw students to become professional broadcasters as part of the new Communications curriculum being established at Shaw. Thirty-one programs will originate locally. Others will be via special tapes from the National Educational Radio Network and from Broadcasting Foundation of America. WSHA's broadcast day will initially operate five days a week, Mondays through Fridays, from four o'clock in the afternoon until ten o'clock in the evening. As the staff expands, the hours will

increase, and the station plans to eventually broadcast seven days a week throughout the year.

The programming is arranged in three general blocks. From four to six p.m., WSHA will emphasize news, educational programs, instructional series for school children plus international coverage of significant events. The international news, to be aired daily at five p.m., will be via the National Educational Radio network and Broadcasting Foundation of America and will include reports from England, France, Canada, Europe and other nations which provide news through this service. Following the newscasts will be music or interviews, via tape, from many nations.

From six to eight p.m., WSHA will emphasize live interviews and discussions featuring people from the Raleigh community, guests from other colleges as well as outstanding faculty and student personalities from the Shaw campus. Nightly at 6:30 there will be a special series on many aspects of the history and the present of the black man in his various environments.

Live talent programs will be broadcast regularly at 7:15 each (Continued on page 5)

Progress for Dialogue '69

REW Wants New Approach

By LOU PEARCE

There is not going to be a special religious emphasis week this year. At first glance when a person sees Religious Emphasis Week, she immediately thinks, "Umph — a week of emphasizing religion." This year will not be a week of emphasizing religion; instead, we hope that this week will be one of dialogue and communication between room and suite-mates, you and people on your hall, under- and upper-classmen, faculty and students, etc. We hope that the things that you experience will cause you to want to talk with other persons.

If you are interested in helping plan Dialogue '69, please contact the following people: Book Display-Ryllis Miller; Supper Club-Cindy Griffith, Serendipity-Betty Bryant; Worship-Pat Armstrong; Publicity-Deborah Ingram or Roma Bowen; Program Editor-Mary Stuart Parker, Hospitality-Linda Avery; Pre-Dialogue-Pat Osbourne; Film making-Sue Hubbard; Film selection-Jennie Lancaster; Artist-Pennye Flynt; Faculty Seminars-Nancy Stroud or Dr. Crook; Seminars-Patsy Johnson; Freshmen Representatives - Betty Anne Haskins or Claire Sullivan.

Remember we can not read your

mind and see if you are interested; you have to take the first step to get involved. We need all of your help and support in order for February 10-14, Dialogue '69, to mean something on this campus. It's your week and it's up to you to make it a success.

What ... No Bells !!

By BROOKS MCGIRT

I remember my Freshman year—how those bells rang all the time.

There were bells all day long: there was a bell to get up by, a bell to go to class by, a bell cheerfully reminding you all day what time it was, a bell announcing the arrival of the supper hour, and at last, a bell to tell you it was almost time for bed. They were a nuisance at first, all that ringing; but gradually they came to be old friends—something we could always rely on to wake us up or to end a boring class.

I remember those bells, all right; and boy, do I miss them this year.

Dinner, Movie Date Prize

Dating Game Creates Sensation

Jones Auditorium was the scene Sunday afternoon, Nov. 17 of the Dating Game, sponsored by the Meredith Student Activities Board and the N. C. State Inter-Fraternity Council and other organizations. Gerald Truelove and Bet Garrett co-emceed the event which featured six Meredith girls and 10 state guys.

Freshman Dale Cunningham won a date to Amedeo's and the Cardinal Theatre with a State freshman, Dave Sumner. Sophomore Jane Holt chose Roy Props, the president of the Sophomore Class, to accompany her to the Open Hearth Restaurant and the Cardinal Theatre. Loureen Slaughter and her junior date will be going to Charlie Brown's Lakeside Steak House and later to the Cardinal. State Senior Dick Patton picked Meredith's Annelise Ware for a steak dinner at the Angus Barn and the movie afterwards at the Cardinal. Altogether it was an entertaining and successful event.

Dale Cunningham said, "I was so terrified that I couldn't even hear the boys' answers and I just took pot luck on selecting one. He seems like a great guy, and I'm really looking forward to our date."



Dating game couples are from left to right: Roy Props and Jane Holt, sophomores, Dale Cunningham and Dave Sumner, freshmen, Annelise Ware and Dick Patton, seniors. Not pictured are Loureen Slaughter and her junior dating game date.

Jane Holt shared Dale's feelings, and commented, "I liked the whole idea of the dating game from the beginning. I especially thought the

idea of a mixer after the program which was suggested by one of the boys was a good idea for future dating games."

