

THE
MEREDITH



TWIG
COLLEGE

Input needed for policy revision

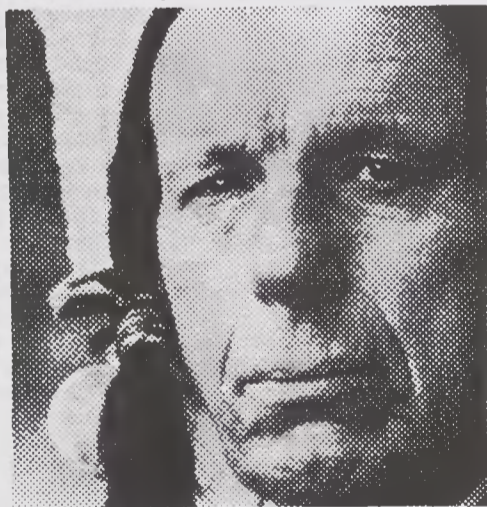
After last weekend's meeting of the Board of Trustees, it has become evident that there are efforts being made to re-evaluate and possibly re-work the existing drug policy here at Meredith. The Student Affairs Committee of the Board of Trustees heard discussion last Friday concerning student opinion on the policy and also heard suggestions for changes, notably dealing with the deletion of the mandatory expulsion clause. The committee listened to a reading of the drug policy in effect at Wake Forest University, which consists of a statement of the North Carolina State laws governing possession of drugs, a statement supporting medical and professional help for the individual if needed, and a clause calling for notification of parents or guardians. The Wake Forest policy does not contain a mandatory expulsion clause.

Last year, the Student Life Committee prepared a re-worked policy which included a clause about probation for the individual, as well as the possibilities of suspension and expulsion. This year's Student Life Committee has decided to recall that piece of action and explore more fully the problem before submitting a recommendation. Two ideas seem to be prominent in the Committee's decision. First, some feel that there should be some other alternatives to the policy of expulsion and suspension. These two "answers" do not leave much room for helping a student who genuinely needs attention because of her particular problem. If the Committee and other interested students and faculty can offer alternatives to these, then the Committee's recommendation will be a major improvement over the existing policy. Second, some feel that the existing policy simply does not work because of its inhibiting nature. Too many students are reluctant to enforce the policy because of the mandatory suspension and expulsion rule. A better policy would be one in which students felt easier about helping a fellow student with her problem, rather than multiplying her woes with swift punitive action.

The initiative seems to have fallen to the concerned students and faculty who are willing to meet this challenge. It seems to me that this topic deserves much open discussion among student and faculty alike. If enough thought and effort is put into solving this problem, then the action taken by the Student Life Committee will be a representative and, hopefully, endorsable recommendation.

EEH

Pollution: it's a crying shame



But does it have to be? Not if you do something about it. So the next time you see pollution point it out to someone who can do something about it.

**People start pollution.
People can stop it.**

Keep America Beautiful

99 Park Avenue, New York, N.Y. 10016



A Public Service of This Newspaper &
The Advertising Council

Junior Ann Wall reports on her life in Germany

From Ann Wall to Cathy Rodenberg

Ann Wall, a junior history major here at Meredith, is participating in the J.Y.M. program (Junior Year in Munich) for the 1973-74 school year. The program sponsored by Wayne State University in Detroit, has 75 students in Munich this year, 13 of whom are from Duke. Describing the program a bit more, Ann

reports in a recent letter that, "Our schedule is a bit wackier than that I'm accustomed to at Meredith. Right now we're in the Orientation Period which is strictly a J.Y.M. thing for us kiddies - what that really means is that we have from now until November 5th to learn German. So while we have classes, (they're not too terribly hard) about three hours a day are spent on grammar, which also includes customs - you know, those important things like how to select the right wine and reading the newspaper. We also have a quickeer course in German History and a seminar in which we're supposed to become acquainted with the vocabulary of our major area. In the meantime, we're supposed to be continuously practicing our German on the poor, unsuspecting citizens of Munich."

Ann continues by describing her living conditions. "I'm living in a very nice place - the Olympic Village. I have a small, single efficiency apartment with a balcony, on the tenth floor of

the Student Quarters. During the Olympic Games, the women athletes lived here. It's rather hard to get to know anyone here since the only thing we share is the elevators, and some how in the wee hours of the morning when all the gorgeous "bods" come walking into the elevator with me, I'm too far gone to "sprechen Deutsch" with them.

To get to my classes I walk about a hundred yards and get on the subway - which is really fun - they're cleaner than ours, fast, a great place to watch people, efficient and inexpensive - and you can use the same ticket on the bus, streetcar or train."

"The famous Munich townhall with the musical moving figurines is great fun to watch. Also, the Bavarians speak their own rather different dialect and have definite styles of doing things, for example, instead of saying "good day", they say literally "greet God." By the way - there are six McDonald's in Munich! This city definitely has a character all its own - I

know of no other city in which I could be riding down the street in a bus and see an elephant drinking from a fountain".

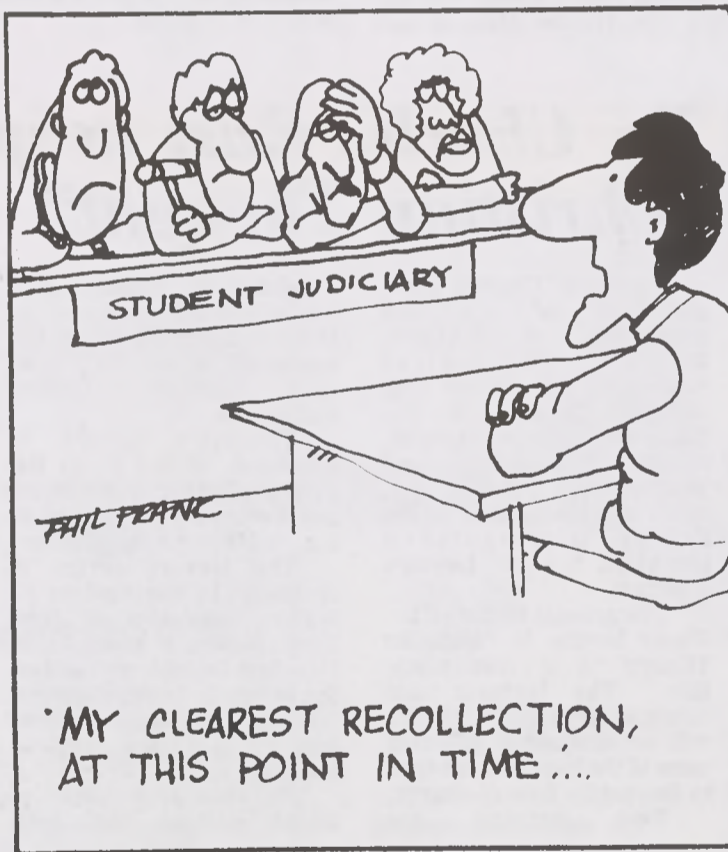
Ann went to Salzburg her first week with a friend and reports that "the Salzburger were trying to explain why and how they identify Americans so easily and made an interesting comment which bears further thought. They said that the facial features of Americans are different and are mixtures of different types, while most Europeans have similar facial features within a nationality because they marry within that nationality."

Another observation that she made was that, "the Germans as a whole seem to be very belligerent toward the Italians and to some extent the Yugoslavs. This is ironic because most of the menial work is done by "Gastarbeiter" (literally guest workers; who are Italian. In Austria these workers are Yugoslav. There is a strong discrimination against these two groups of people and it raises big questions about our own situation in America. They talk so much about our discrimination against the blacks and ignore their own similar behavioral patterns - rather like the English and the Indians. Admittedly, the Italians and Yugoslavs do seem to be rather rude and ill-mannered, but perhaps they're only conforming to the expectations of the society around them much as men of the stature of Booker T. Washington once shuffled and said "yessuh" on occasion. It's a rather circular pattern of thought - a "which comes first?" sort of thing - the discrimination or the grounds for discrimination?"

Blanton picked

President Weems has appointed Dr. Gloria H. Blanton, Associate Professor of Psychology, the Corporate Representative of Meredith to the American Association of University Women. In June she was Meredith's appointed Corporate Delegate to the biennial convention in Washington. Meredith is one of about 200 institutions which are corporate members of AAUW.

One of the major concerns of the AAUW is to raise standards of education for women.



Lemmon appointed

Dr. Sarah Lemmon, chairman of the history department has been appointed to serve a two year term on the Raleigh Historic Properties Commission. The meetings are held downtown at the Mordecai House for the purpose of choosing and naming the historic sites throughout Raleigh.

Presently they are concerned with two projects, one of which is an effort to save the old city market. Also, the 100th anniversary of the Briggs Building on Fayetteville St. downtown is approaching and the Commission will be planning festivities for this occasion.

Dr. Lemmon is quite pleased with her new position and holds a great deal of

interest in the Commission's projects.

EDITORIAL STAFF

Editor
Managing Editor
Reporting Staff

Columnist
Typist
Faculty Advisors
Business Editor
Advertising Manager
Advertising Staff
Circulation Manager
Circulation Staff

Faculty Advisor
Photographers
Layout

Member Associated Collegiate Press. Entered as second-class matter at post office at Raleigh, N.C. 27611. Published weekly...except during holidays and exams. THE TWIG is served by National Educational Advertising Service, 18 East 50th Street, New York. Subscription rates: \$3.70 per year.

Eleanor Hill
Rebecca Askew
Norma Heath, Chrystal Riviere,
Cathy Rodenberg, Catherine Stover, Allyn Vogel
Chris Cornwell
Joyce Martin
Alison Maready
Dr. Norma Rose, Dr. Tom Parramore
Deborah Phillips
Candy Purvis
Cathy Murph, Mildred Long
Rebecca Askew
Cookie Guthrie, Marlene Ezell,
Rebecca Childs
Dr. Lois Frazier
Ami Pierce, Marlene Hart
Lynn Jones, Chris Cornwell