

THE TWIG

Newspaper of the Students of Meredith College

VOL. XLVIII

MEREDITH COLLEGE, RALEIGH, N. C.

APRIL 23, 1974

NO. 23



Portia (Carletta Jamison) and Juliet (Donna Thomas) confer in "When Shakespeare's Ladies Meet."

Weekly convocation may be abolished

by Genie Rogers

At its meeting on April 20, the Meredith College faculty approved two measures of major consideration. Of primary interest to students, a resolution from the ad hoc Convocation Committee was passed which, subject to the president's approval, should become effective for the next fall semester.

The resolution offered several variations from the present convocation policy, chiefly the abolition of weekly required meetings and their replacement with voluntary attendance at monthly meetings. The 10:00 a.m. hour on Wednesdays and Fridays will be used as in the past, with the exception of S.G.A. meetings being moved to

Mondays. The remaining Mondays will be used for class meetings and similar activities as needed.

If implemented as policy, the resolution would also establish a Convocation Committee to plan the Monday programs. The Committee will be a separate committee with its own budget; its chairman will serve on the Cultural Affairs Committee to help maintain continuity of planning.

In other action, the faculty approved a recommendation concerning tenure which set up a tenure committee giving a new voice to faculty members in the granting of tenure to one of

(continued on page 2)

Performances slated for student-directed one acts

by Rebecca Askew

When Shakespeare's Ladies Meet, Flounder Complex, and Spoon River Anthology will be presented this week, climaxing several weeks of effort by three student directors. All performances begin at 8:00 p.m. in the Hut, admission is free.

When Shakespeare's Ladies Meet, directed by Pam Faison and Spoon River Anthology, directed by Eleanor Hill are slated for Tuesday, April 23. Flounder Complex, directed by Marlene Hart, and Spoon River Anthology will be presented Wednesday, April 24. Thursday night's program includes Flounder Complex and When Shakespeare's Ladies Meet.

Drama Instructor Linda Bamford, who has supervised the productions, was enthusiastic about the openings this week. "This was to be both an experiment and a learning experience for the students," she commented. "It is a first for Meredith but, as an added bonus, we will have some very good theatre for the whole community to enjoy: good plays that will be very well done indeed."

The student-directors are producing these plays as a portion of a special studies course in advanced directing which they are taking for credit under Mrs. Bamford. All three student directors have considerable experience in the field of drama. Pam

Faison has played a lead in Glass Menagerie and Miracle Worker and also appeared in Carousel. She has directed summer productions in her hometown. Eleanor Hill was assistant director for Meredith's production of The Glass Menagerie and also served on the set and technical crews of various productions here.

Marlene Hart has been set designer for The Effects of Gamma Rays on Man-in-the-Moon Marigolds and Miracle Worker. She was assistant director for Carousel and was technical director of Marigolds. She has also taken several courses in drama and theatre arts at other schools and in conjunction with these courses has directed and acted in several productions.

The student directors were well-received by the eleven Meredith actresses in the plays. They seemed to enjoy the unique experience of working under other students. Susan Tew Wilkins, who is in Spoon River Anthology, said, "It was refreshing to work under a student; I felt freer to voice my opinions about some of the technical aspects simply because the director was my age." Susan also added that "rehearsals were fun, like a party, because we students think alike."

Pam Faison spoke for all three directors when she said that it was scary to be responsible for putting an entire play together. She also noted that "Even though it is much more difficult to be on the director's side of the fence, the experience has been rewarding."

Pam's assistant director is Jeanne Dare. Cast members of When Shakespeare's Ladies Meet are Debbie Liner Dobb as Desdemona, Wyn Turlington as Portia, Carletta

Jamison as Kate, Kathy Harrison as Cleopatra, Pam Allen as Ophelia, and Donna Thomas as Juliet.

Allyn Vogel is assistant director of Spoon River Anthology. The cast includes Susan Tew Wilkins, Donna Hopewell, Mary Warren Ayers, Harry Dorsett, Ron Jones and Marty Burke. Greg Jurley and Sue Stenbuck provide music during the production.

Assistant directing Flounder Complex is Martha Claybrook. Members of the cast are Cathy Bland and Jeni Jenkins.

Marlene Ezell is technical director for the three plays.

Health clinic offered

A health clinic will be held at Meredith on the evening of May 1st in which pap smears and classes of instruction in self-examination for breast cancer will be available. Two nurse family practitioners will be in charge of the clinic, which will cost \$2.50 per pap smear with the self-help classes taught free of charge. Students will be assigned to the clinic in small groups and examined individually, at times to be announced later according to the number wishing to participate. If interested sign up with your hall proctor or Genie Bailey.

Spring's Court this week-end

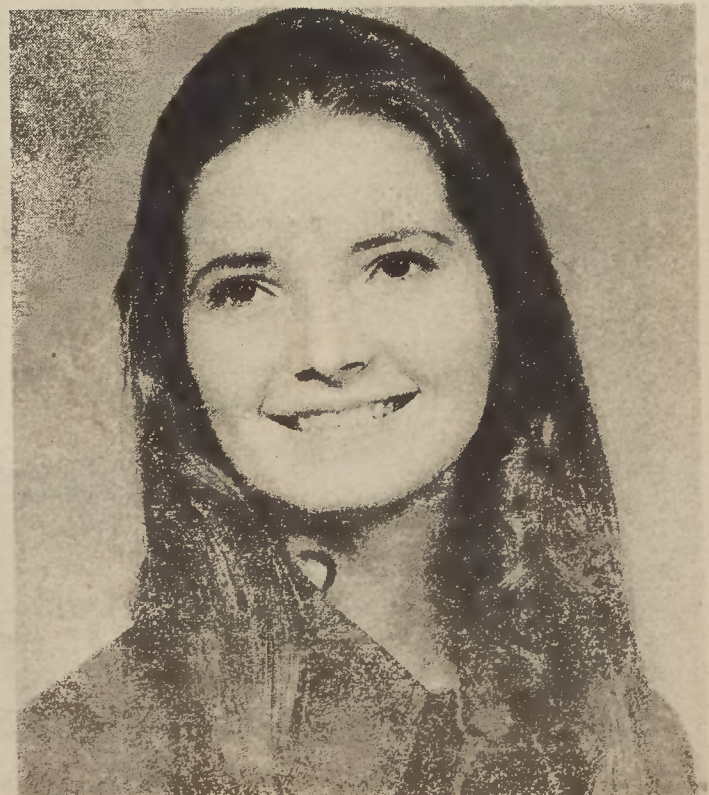
The 1974 Spring's Queen and her court will be presented this week-end on Saturday, April 27. The presentation will take place at 3:00 p.m. in McIver Amphitheater as part of the Parents' Weekend festivities.

Alice Winecoff, a senior from Durham, will reign as Spring's Queen. Senior Vivian Craig of Stanley will serve as Maid of Honor. Senior attendants are Cindy Godwin of Bayboro and Cindy Rosser from Hampton, Va. Sheryl Harrell from Woolwine, Va. and Jane Taylor from Gastonia will represent the Junior Class. Sophomore attendants are Lou Mickey from Winston-Salem and Dianne Creech from Zebulon. Debbie Talbert of Charlotte and Grace Cawley of North Palm Beach, Fla. will serve as the freshman attendants.

Modern dancers will provide entertainment under the direction of Mrs. Frances Stevens. The theme, "Man's Treasures," will be expressed through dances depicting "The Sea," "The Earth," and "The Sky". The finale symbolizes the splendor of "The Rainbow."



VIVIAN CRAIG



ALICE WINECOFF