

## Tennis team begins fall season

by Deanna R. Harris

The Meredith tennis team, coached by Jay D. Massey, will face its first opponent, Methodist College, on Tuesday, September 16 at 2:30 at Meredith.

The team consists of five returnees, four of whom were seeded in the top six last year. Returning are Barbara Bulla (senior), Elizabeth Hornthal (junior), Emily Houser, Amy Messick and Kim Brittsan (sophomores). The new member rounding out the top six is freshman Anne Whitesides. Other team members include Elizabeth

Wilson, Jean Nichols, Michele Lenhart, Beth Bryant and Angela Tilly.

Meredith starts its fall season with the loss of Teresa Duffy, last year's number one seed. Coach Massey feels that "Barbara Bulla will have big shoes to fill as she will probably move into the number one spot vacated by Duffy."

Scoring for the intercollegiate matches will be two out of three sets—no add.

### TENNIS SCHEDULE 1986-87

Fall				
Tues.	Sept. 16	Methodist	Home	2:30
Thurs.	Sept. 18	Campbell	Away	2:30
Tues.	Sept. 23	Wingate	Home	2:30
Fri.-Sat.	Sept. 26-27	Tournament	Home	Begin @ 9:00
Wed.	Oct. 1	Queen's	Home	3:00
Thurs.	Oct. 2	ECU	Away	3:00
Mon.	Oct. 6	Greensboro College	Home	2:30
Tues.	Oct. 7	A.C.	Away	2:30
Thurs.	Oct. 16	Methodist	Away	2:30

### MEREDITH COLLEGE VOLLEYBALL 1986

	Chowan vs Mary Washington	(6:30)	
Tues. Sept. 16	Meredith vs Mary Washington	7:30	A Chowan C
	Meredith vs Chowan	8:30	Musfreesboro
Fri. Sept. 19	Meredith vs Lynchburg C	6:30	H
	Lynchburg vs Greensboro C	7:30	
	Meredith vs Greensboro C	ASAP	
Mon. Sept. 22	Meredith vs Averett	6:30	A Averett C
			Danville, Va.
Fri. Sept. 26	Meredith vs NCA&T	7:00	
	Meredith vs Methodist	8:00	A Methodist C
			Fayetteville
Thurs. Oct. 2	Hollins vs RMWC	(6:00)	A RMWC
	Meredith vs Hollins	7:00	Lynchburg, Va.
	Meredith vs RMWC	8:00	
Fri. Oct. 3	Meredith vs Lynchburg C	5:00	A Lynchburg C
	Meredith vs Sweet Briar	6:00	Lynchburg, Va.
	Lynchburg vs Sweet Briar	7:00	
Mon. Oct. 6	Meredith vs Averett	6:30 p.m.	H
Fri. Oct. 10	UNC-G Tournament begins	3:00 p.m.	Greensboro, N.C.
Sat. Oct. 11	Greensboro C		
Mon. Oct. 20	Meredith vs Chowan	6:30	H
	Meredith vs Chowan	7:30	
	Meredith vs Methodist	ASAP	
Thurs. Oct. 23	Meredith vs NC Wesleyan	6:30	A NC Wesleyan
			Rocky Mt.
Mon. Oct. 27	Meredith vs Roanoke	7:30	A Roanoke C.
			Salem, Va.
Tues. Oct. 28	Meredith vs Hollins C	5:00	A Hollins C.
	Meredith vs Emory & Henry	6:00	Hollins College, Va.
	Hollins vs Emory & Henry	(ASAP)	

## Golf Team Searches for Members

by Melanie Eisele

Though rarely heard about, Meredith College does have a golf team. Junior Shelly Paul, sophomore Jennifer Guyer, and freshman Tracy Sternberg make up this dedicated team.

Requirements for team play in golf include a membership of at least five players. Meredith's team only has three members, so they must play as individuals. Even so, the ladies have not been without rewards for their play. Last spring, Shelly Paul and Kim McMurray who has graduated made Divisions II and III All-American. Golf trips are not bad either. The team has gone to Florida for the past two years for tournaments and they went to Yale two years ago. If anyone can play golf and would be interested in playing for Meredith's team, please contact Miss Massey in the P.E. department. Golf is played in the fall and spring semesters and the current team would like to participate in future tournaments as a team. This year's schedule is:

September 12-14	Longwood, VA
26-28	East Coast Atlantic Conference at James Madison
October 3-5	Yale University
10-12	Duke University

First Presbyterian Church  
(Downtown)

INVITES YOU TO  
AN INTRODUCTORY

COLLEGE LUNCHEON

Sunday 12:15-1:30  
September 14, 1986

FREE FOOD AND  
TRANSPORTATION

For more information  
Call Allan or Carol  
Barwick 876-5156  
or  
Check Dorm Boards

## Potential for volleyball team good

by Deanna R. Harris

The Meredith College volleyball team begins its season with, as Coach Chamblee feels, the "potential to have a really strong team."

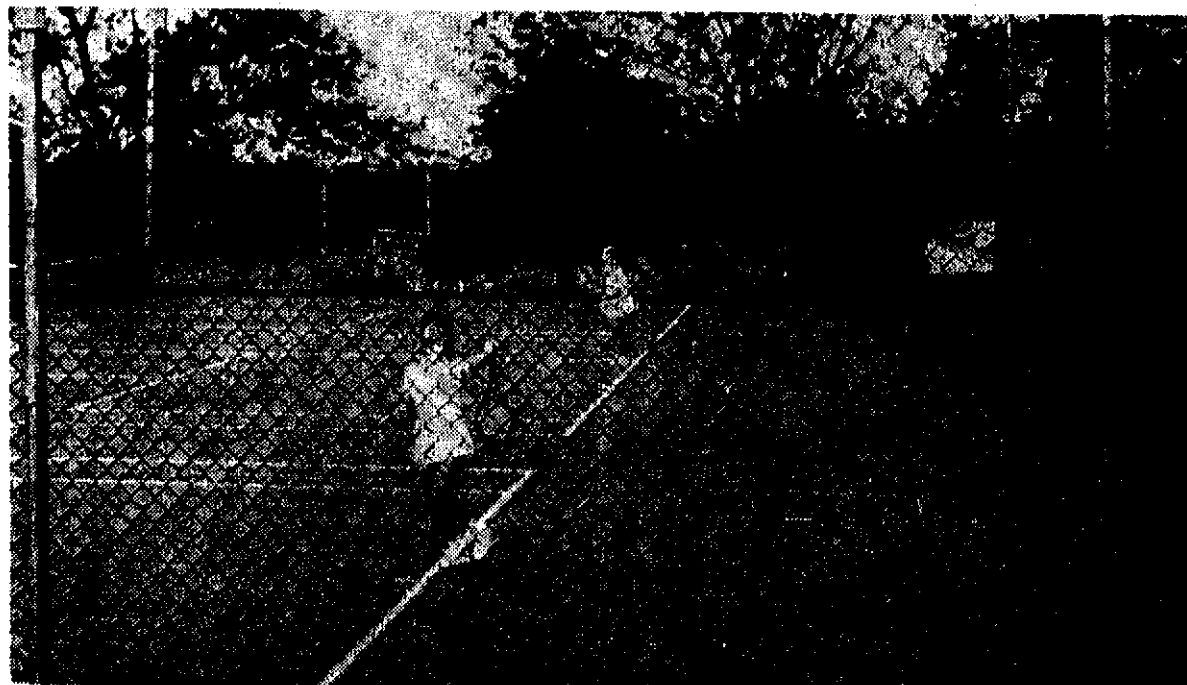
The team members are Susan Beck, Amanda Brooks, Yvette Brown, Beverly Gupton, Kitty Hipp, Julie Jones, Carolina Gomez, Crystal Lennon, Karen Mann, Sue Reese, Kim Smith and Corina Porras.

Though the major weakness of this year's team is blocking due to short hitters,

returnee Sue Reese has proven to be the "best hitter" and an "effective blocker", according to Coach Chamblee.

Since last year's setter graduated, a new one is needed. Karen Mann and Carolina Gomez have practiced setting on the team before while new member Kitty Hipp has experience from playing setter in high school.

The other volleyball advisor is Coach Boss.



Michele Lenhart prepares for her team member's serve during tennis tryouts. Photo by Kim Cook