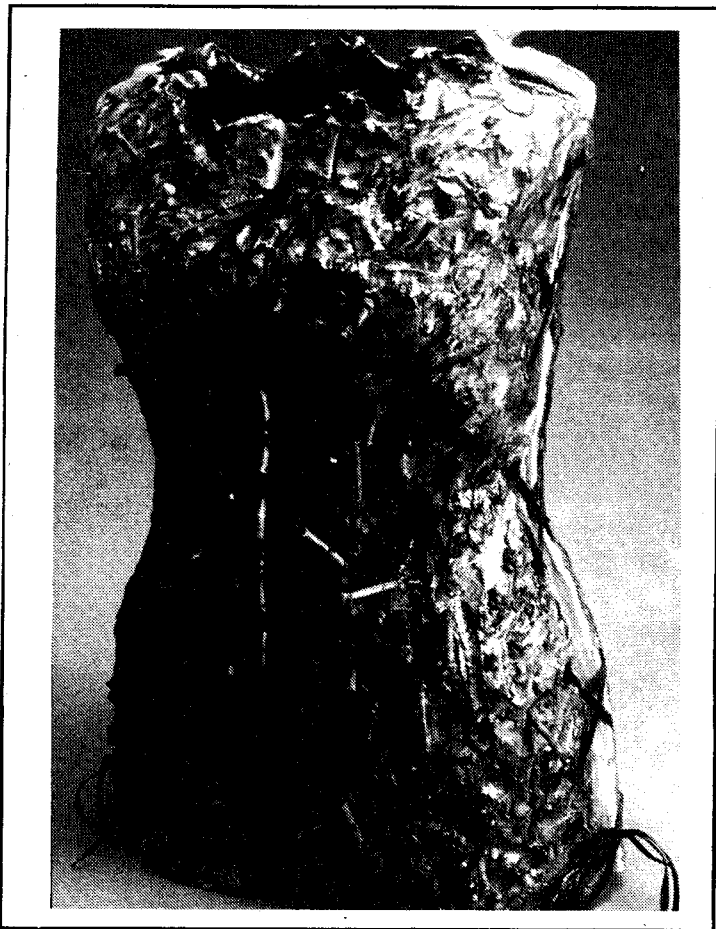


Campus Extras

Six senior art majors prepare for final show



Above is just one of the pieces that senior Brandy Murray will exhibit at the Senior Art Exhibition, which opens Sunday in Gaddy-Hamrick Art Building.



Joan McGuire will display her sculptures, including the one pictured above, at her senior show, beginning on Sunday.

In order to complete their studio art major, the Meredith department of art requires its senior majors to complete a show as a final requirement.

Because of this requirement, each semester at Meredith, several shows are held in the Gaddy-Hamrick Art Building to display the art of these

seniors.

Sunday, Apr. 22, the last senior exhibition of the year will open from 2-4 p.m.

At this show, six graduating seniors will show friends, family and other art admirers the fruits of their hard, four-year-long labors.

Seniors Brandy Murray,

Emily Soldin, Joan McGuire, Ruth Burton Toaso, Katie Hilbert and Megan Lacy are the seniors who will be represented at Sunday's opening.

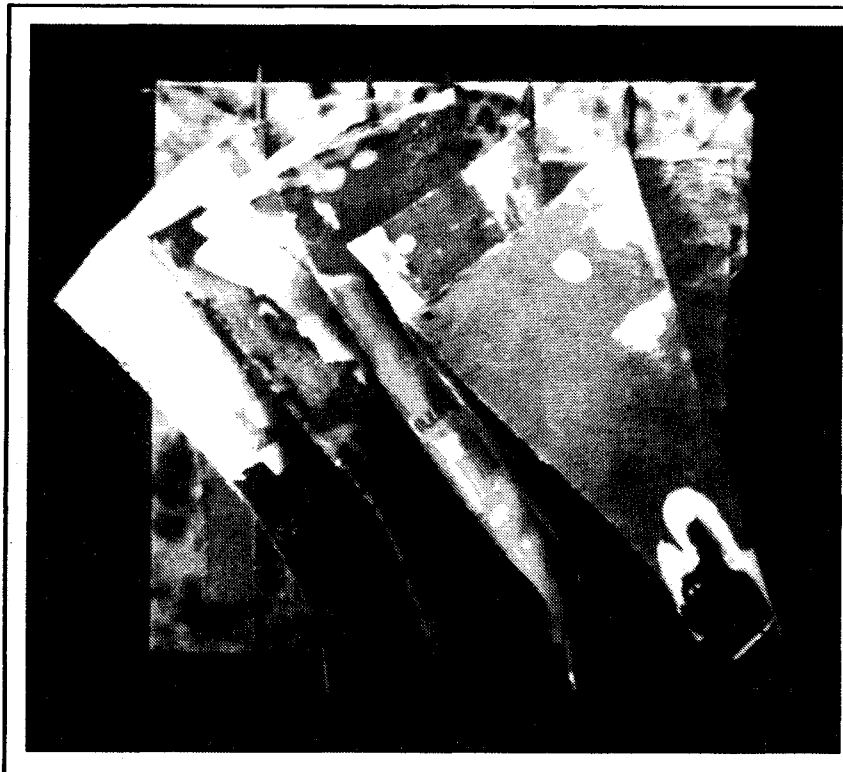
The art show gives the seniors a chance to experience what their future shows might be like.

In fact, many of the works of art will be for sale at varying prices.

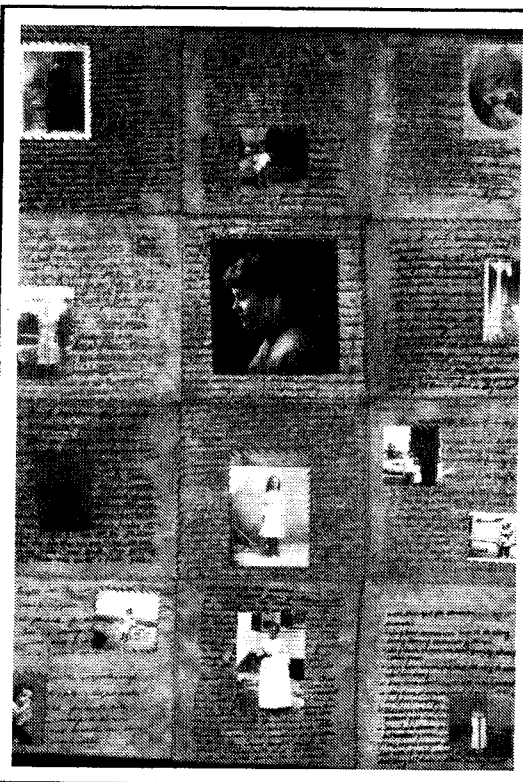
Whether the student has specialized in sculpture, painting, ceramics or graphic design, each senior is given the chance to showcase her work.

The students have selected their best pieces from their art careers, and those pieces are the ones that are displayed.

The Senior Art Exhibition runs from Sunday through May 13 and is free and open to the public from 9 a.m. to 5 p.m. during weekdays and from 2 to 5 p.m. on weekends.



Emily Soldin's *Pages of Italy*, made of batik and silkscreen on fabric with bead embellishment, will be on display for three weeks during the semester's final Senior Art Exhibition.



Ruth Burton Toaso's pieces (left), along with Megan Lacy's (right) and Katie Hildreth's (not pictured) photographs, are the culmination of their four years in the Meredith art department.