

California native calls Meredith home

MARGARET COONEY
Staff Reporter

She came to North Carolina with a plan to go into food administration. But when she came to teach at Meredith as an adjunct in 1997, she never left.

Dr. Jody Roubanis, one of Meredith's newest faculty members in the Department of Human Environmental Sciences, said that she "never dreamed [she] was going to be a professor." After doing her undergrad work at California State University at Long Beach, where she earned a degrees in dietetics and food administration, she thought she was headed immediately toward a doctorate.

But then she taught a Family Consumer Science class as an adjunct at Meredith and realized she had found her place.

"The first day I came on this campus everyone was smiling and happy," says Roubanis. "Coming from an institution that wasn't like that, it was refreshing. I enjoy the collaboration of people outside the department, in the department, the open sharing and the authenticity of the people here."

Roubanis teaches the Foods and Nutrition classes along with several Family Consumer Science courses. Students who take her Foods and Nutrition

good decisions.

"It's a wonderful topic," said Roubanis. "It [involves] growing together, and I feel a part of what's going on at campus and in people's lives through that class."

Teaching at Meredith for four years has given Roubanis time to process why she has stayed.

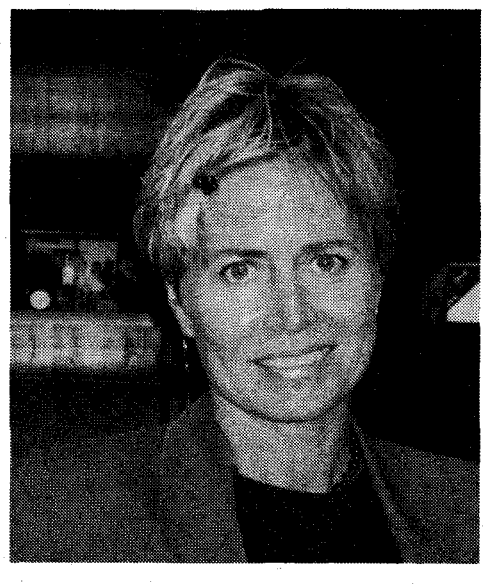
For one, the small class sizes give her a chance to really know her students. Another is simply the people she has gotten to know.

For Roubanis, Meredith is what teaching is all about. She likes the fact that Meredith has wholesome values and is focused on community service, leadership and helping women to succeed.

When asked what kind of legacy she would like to leave at Meredith, Roubanis said that she would like to leave knowing

that she has helped her students achieve their fullest potential.

"I knew even before I came to Meredith that what drives me and what really makes me excited about life is seeing others achieve their potential. That just really gets me excited, and I've always been very motivat-



This year, Dr. Jody Roubanis visited Meredith once and never left. She is one of 23 new faculty this year.

PHOTO BY CHRISTINA HOLDER

classes often find themselves going to Belk Dining Hall and working with the dining staff.

Although she enjoys all her classes, Roubanis has a special fondness for her Family Consumer Science class because the material covers family resource management and teaches about life and making

Meredith beats Converse 4-2

MOLLY HUFFSTETLER
Staff Reporter

Early in the game against Converse College yesterday at the Meredith field, goalie Blair Ruark was put to the test: Converse took shots at her goal left and right. However, the Angels played tough, beating Converse 4-2.

Midway through the first half, #15, Annie Palmquist, booted a goal kick down field. After the ball was passed back and forth among the teams, it was knocked out of bounds. Meredith's #2, Ashley Ellis was the spotlight of the play as she recovered her own corner kick, making it a goal for the Angels.

Converse had their chance to come back with a free kick resulting from #15, Palmquist,

verse.

Partially through the second half, Converse took advantage of Ruark being out of the box, and put the ball in for a tie ball game. But the Angels quickly turned the game around and #3, Katie Fuller, shot a goal once again, pulling the Angels ahead over Converse with a score of 3-2.

With ten minutes left in the game, Meredith players Ellis and Fuller worked together as a tag team making a deflected ball a goal. Fuller took the initial shot, and it hit the post bringing the goalie out of the goal.

Ellis moved in quickly to take advantage of the open goal, putting another one in for the Angels bringing the score to its final state of 4-2.



Meredith and Converse hit the field for the first time this season. Meredith beat Converse 4-2 yesterday.

PHOTO BY CHRISTINA HOLDER

taking out a Converse offensive player. Converse attempted a fake out, but there was no fooling the Angels' defense. They attacked the ball and took over the field once more.

However, a call off sides alarmed the Angels, and a quick Converse turnover allowed Converse to take advantage of the distracted Meredith defense for the first goal of the game.

In the first five minutes of the second half, the Angel shot for a goal, and the crowd was certain that the Converse goalie saved it. But the goalie lost control of the ball, and the ball rolled between her legs and into the goal. This gave the Angels a lead 2-1 over Con-

All around strong defensive skills, and #15, Annie Palmquist's constant and reliable kick to get the ball down field were a key in the win.

Just as important as the defense was the team work of the mid-field and offense.

"I am very proud of the way we played. We pulled together as a team, and that was important because our bench resources are limited to only one player. An outside source told our coach that we would probably lose today. In winning today we proved to ourselves that we are a strong team," said Palmquist.

**WISH UPON A STAR ...
COME WASH WITH US!!!**

Carwash to benefit the Make-a-Wish Foundation® of
Eastern North Carolina

Sponsored by Meredith College

Saturday, September 8th
9:00am until 1:00pm
Applebee's on Hillsborough Street

Questions?
Contact Amanda Warren x2510
Allison Shivar x2504
Anne Stewart 858-5809