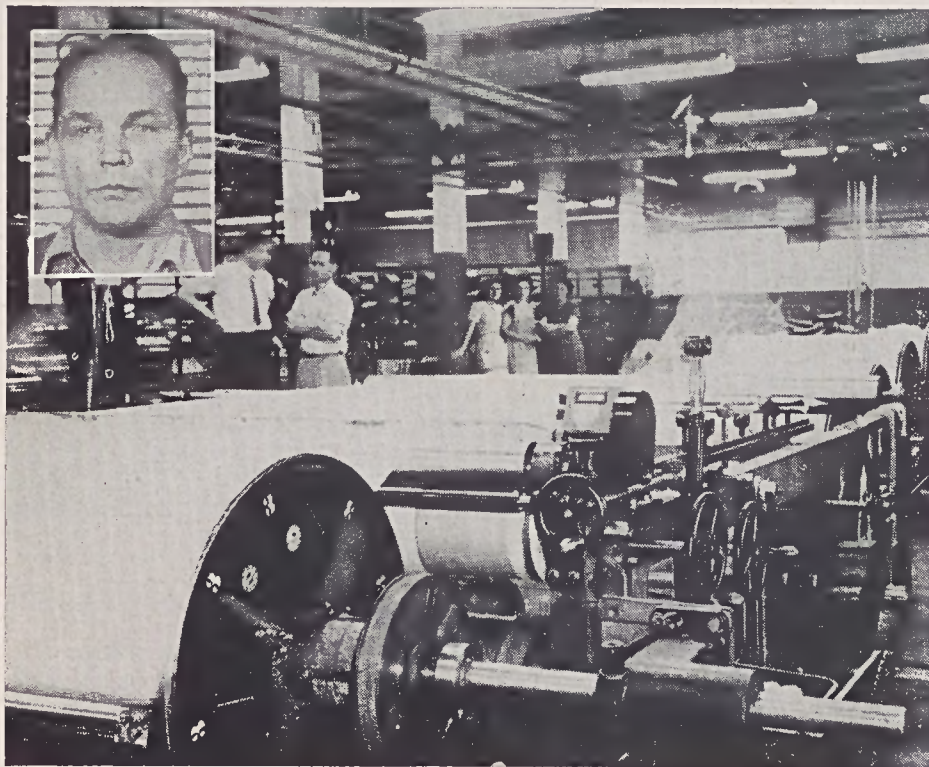


Woolen Mill Hi-speed Beamer Makes Quality Warps



Shown above is a view of the new Saco-Lowell beamer recently installed at the Woolen Mill. The operator, Sherman Hailey, is shown in inset at top left. Standing beside the machine are Otis Marlowe, acting editor of The Mill Whistle, and Max Swindell, second shift assistant foreman; and in the background are Modena Kerley, winder hand; Edna Smith and Dolly Fulcher, spooler hands.

The new beamer is a high-speed, modern machine and turns out better quality work than the old machine and does it faster. It has a Reeves variable-speed motor drive and is of heavier construction than the old belt-driven slasher. The motor drive alone improved quality to the extent that it eliminated the lint and other foreign matter which was sometimes knocked or fanned into the work by the action of the belt.

The Woolen Mill had previously installed two new warp dressers to replace two old machines of basically the same type. The new machines have a spool creel and improved measuring devices. Also, the new dressers are of the pinless type, thereby eliminating pin-marks in the cloth.

Hodges Flies To Rio To Plan Rotary Meet

Luther H. Hodges, vice-president of Marshall Field and Company and general manager of the Manufacturing Division, is general program chairman for the 1948 International Rotary convention to be held in Rio de Janeiro, Brazil. Mr. Hodges flew down to Rio early this month and spent several days making preliminary arrangements with the Brazilian Rotarians.

An exciting experience happened on the return trip when one of the engines failed while the plane was out over the Amazon river at a point where the Amazon is 130 miles wide. The plane turned back on the other three engines and landed at Belem, another principal city of Brazil, where repairs were made. Mr. Hodges was back in New York on August 15.

Blanket Mill

By Katherine Turner

C. W. Edwards is very proud of his grandson, who is just 18 months old and has crossed the U. S. twice and recently jumped out of a three-story window without injury while visiting his other grandparents in Danville. The young "Superman" is getting ready to join his Dad, Lieut. S. T. Claude, in Germany.

We are sorry to hear that Lillian Odell and Mozelle Sumner are ill. We wish them a quick recovery.

Mr. and Mrs. Ben Wade enjoyed the week-end in Roanoke.

Lee Francis and Robert Atkins were on vacation last week.

Evelyn Overby and Lorene Akers are working notices. Evelyn will join her husband, J. C., at his station.

J. E. Rodgers is visiting his brother,

John, in Plant City, Fla.

Wes Weadon is at home from hospital, and improving nicely. On the sick list also are Gladys Leary and Ethel Walker.

Did you ever hear of a hog kicking anyone in the face? Ask Bob Martin.

Cigars were flowing freely around Draper Monday. A boy to Mrs. Clifford Ball Sunday at Leaksville Hospital.

Company Men Home From Conference At Lake Placid

Lawrence E. Richards, Training Director, has returned from Lake Placid, N. Y., where he was a member of the staff at A. H. Mogensen's Work Simplification Conference. This conference is held yearly during July and August for individuals from various industries for the purpose of training these men in the various phases of Work Simplification in order that they may return to their industries and conduct a Work Simplification program.

Wade Younts, Bedsread Weave second shift foreman, and Numa R. Martin, formerly of the Wage Bureau and now of the Training Department, attended this year's sessions and were to return home today. Marshall Field and Company, Manufacturing Division, to date has seven men who have completed this work. Besides those mentioned above are D. A. Purcell, Blanket Mill; Frank Suttentfield, Finishing Mill; F. M. Holmes, Jr., Wage Bureau; and E. G. Michaels, Personnel Department.

In certain sections of Switzerland it is customary to make a wheel of cheese when a daughter is born in the family, and not to cut this wheel until her wedding day.

Absenteeism

ABSENTEE METER

Two-week periods ending July 21 and August 4, 1946

MILL	Per Cent	
	7-21	8-4
Central Warehouse ..	7.2	1.2
Towel	5.8	4.4
Hosiery	3.6	5.4
Bleachery	6.0	5.9
Finishing	5.1	6.6
Woolen	7.9	6.9
Rayon	9.3	9.3
Blanket	7.8	9.8
Bedsread	9.6	10.7
Karastan	11.6	11.0
Sheeting	11.0	12.1
TOTAL	8.2	8.6