

# Fieldcrest

FASHIONS FOR BED AND BATH

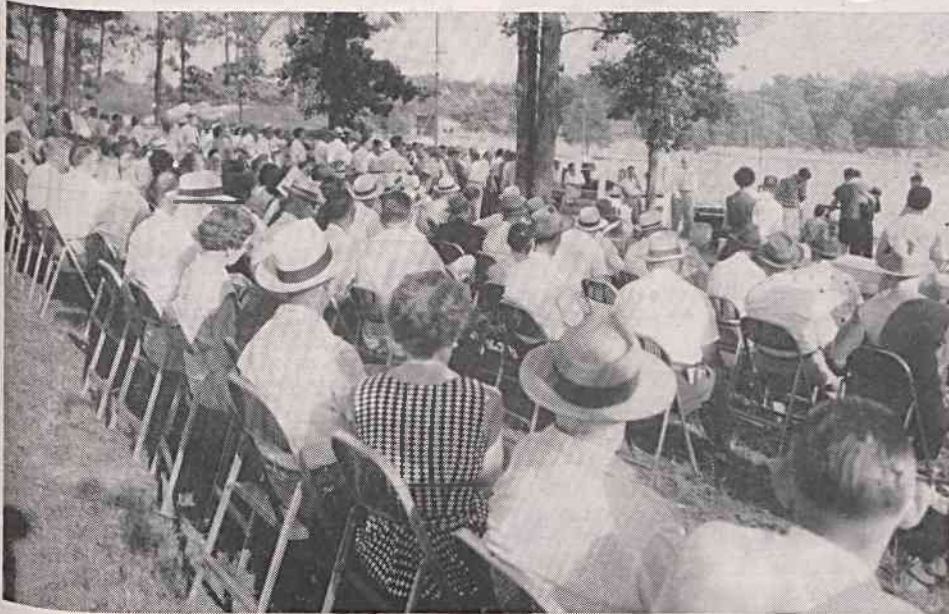
# MILL WHISTLE

VOL. XV

Spray, N. C., Monday, September 24, 1956

NUMBER 6

## Fieldcrest Honors Long-Service Group



A part of the crowd at the 25-Year picnic. More pictures on page eight.

### Nearly 600 Persons Attend 14th Annual Meeting Of The 25-Year Club; Picnic Held At Stadium

A crowd of nearly 600 persons attended the Fieldcrest Mills 25-Year Club picnic in Morehead Stadium Saturday afternoon, September 15. The event was considered the best attended and most successful in the history of the club.

The highlight of the program was an address by President Harold W. Whitcomb who reviewed the progress made by the mills in recent years and discussed some of the plans for the future.

Robert A. Harris, vice president in charge of manufacturing, was master of ceremonies. The invocation was given by the Rev. J. K. McConnell. R. H. Tuttle welcomed the 66 new members of the club and J. H. Ripple handled the drawing for attendance prizes. Messrs. McConnell, Tuttle and Ripple are members of the 25-Year Club.

Mr. Harris introduced Paul D. Emery, assistant to the vice president in charge of manufacturing, Clinton J. Frank, Jr., director of industrial relations, and Benjamin Thomas, Jr., assistant manager of the Synthetic Fabrics Mill, who recently joined the Fieldcrest organization.

The club's eight members with more than 50 years of continuous service were recognized and asked to stand. These were O. F. Ferguson, J. Will Patterson, W. A. Blackburn, Miss Mollie Lea, A. D. Weaver, W. Riley Gover, Miss Annie Lea and J. J. Dodson.

Also recognized were S. R. Fifield, vice president in charge of purchasing,  
(Continued on page two)

### Reed To Be Council Speaker On Oct. 18

C. S. Reed, Duke Power Co. vice president and rate engineer, will trace the progress and growth of the Piedmont Carolinas when he is featured speaker at the opening meeting of the Carolina Cooperative Council Thursday evening, October 18 at 7:30 o'clock in the Consolidated Central Y.M.C.A.

Blending original humorous poetry with cold statistics, Mr. Reed will outline the South's growth from a "one-gallus economy" to the highly diversified production center the region is today.

Mr. Reed is a native of Pittsburgh, Pa. who came South permanently in 1934. He and Mrs. Reed live on and operate a farm at Matthews near Charlotte. He was a rate consultant before joining Duke Power and is nationally known in the field of electric, water, and transit rate making.

He is a past president of the Charlotte Engineers Club and of the Charlotte Kiwanis Club. He writes poetry as a hobby.

### Courses In Departmental Management To Start At Fieldcrest This Week

The first in a series of courses in various phases of departmental management which will continue over a period of several years, will open this week at Spray and Fieldale. Foremen and assistant foremen from all mills will participate.

The courses were arranged by the Training Dept. and will be conducted by instructors from the mills and staff departments. Each class will meet from 7 p.m. to 9 p.m. one night a week for about 10 weeks.

Fifteen supervisors are enrolled for the course in "Training Operators," to be given in the Towel Mill conference room at Fieldale. The classes will begin Monday night, September 24. Instructors will be James Gardner and William McGehee.

A course in "Machinery Efficiency for Carding and Spinning Supervisors" will open Tuesday evening, September 25, in the Nantucket conference room at

(Continued on page two)

### The 'Living Rose'

What is the "Living Rose"?

It's a completely new rose variety developed in Texas and named for LIVING FOR YOUNG HOMEMAKERS magazine, which will introduce Fieldcrest and other tie-in merchandise in its October issue. See pages four and five for Fieldcrest's completely coordinated collection of bed and bath fashions on the Living Rose theme.