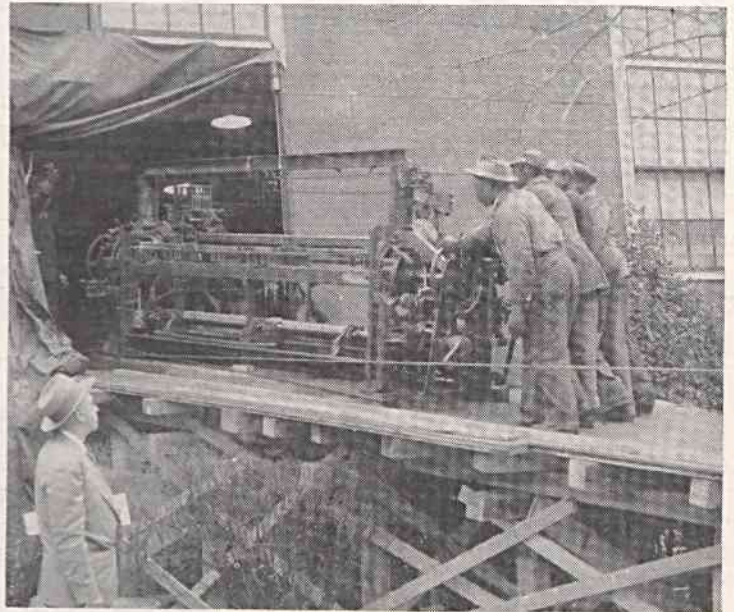


In storage at a warehouse in Spray, looms for the Bedsread Mill are inspected by Joe Farrell, of the Engineering Dept.



S. T. Anderson, Bedsread Mill superintendent (left foreground), watches as a loom is pushed up ramp and into the mill.

Progress Being Made On Loom Installation

Good progress is being made on the installation of additional looms and dyeing equipment in the Bedsread Mill in line with the Company's plan for a 20 per cent expansion in bedspread production and sales.

Fifteen of the 63 looms recently purchased by Fieldcrest for the Bedsread Mill already have been installed. The remainder have been received and are stored at Spray. It is expected

that eight more looms will be placed in the mill this coming week. The dyeing units are now being erected.

The mill will place all 63 of the looms in the main weave room. To gain the needed space, 35 of the present looms will be moved to a new weaving section in the basement. Sixteen of these looms already have been moved and most are in operation. Some others were to have been moved during the

past week end. Thirty-two old model Draper looms will be stored for the time being.

Fieldcrest purchased all of the Crompton & Knowles box looms with jacquard heads and all of the beam and package dyeing equipment formerly operated by the Monument Mills, Inc. of Housatonic, Mass. Monument last November announced its intention to liquidate.

1957 Officials Named For Mutual Aid Assn.

In the recent election of officers, directors and unit committeemen of the United Mutual Aid Association, Glenn Simpson was re-elected president and Ray Warner and Grissom Manley were re-elected vice-president and treasurer respectively. Clarence Martin was elected secretary.

Other members of the board of directors for 1957 are Robert Adkins, Blanket Mill; Maurice Rawlins, Central Warehouse; J. B. Reynolds, Karastan; Malcolm Stearns, Automatic Blanket; Dan Squires, Sheeting; and F. Wade Younts, Bedsread Mill.

Unit committeemen were elected as follows: General Office—Clarence Martin, chairman; Norwood Cheek, vice-chairman; Lois Talley, secretary; C. C. Campbell and Cynthia Sherwood, Sheeting—Dan Squires, chairman; E. C. Stophel, vice-chairman; Mamie Link, secretary; Mary Shelton and Joe Holliman, Bleachery—Glenn Simpson, chairman; Charlie Luther, vice-chairman; Wilda Saunders, secretary; Eugene Purcell, and C. S. Stanley, Central Warehouse — Maurice Rawlins, chairman.
(Continued on page seven)



OFFICERS of the United Mutual Aid Association for 1957, shown above, are (seated) Glenn Simpson, Bleachery, president; left to right, standing, Ray Warner, Synthetic Fabrics Mill, vice-president; Clarence Martin, Engineering Department, secretary; Grissom Manley, Finishing Mill, treasurer. Roger L. Wilkes, business manager of the association, is in right foreground.