

MEET THE FOLKS AT . . .

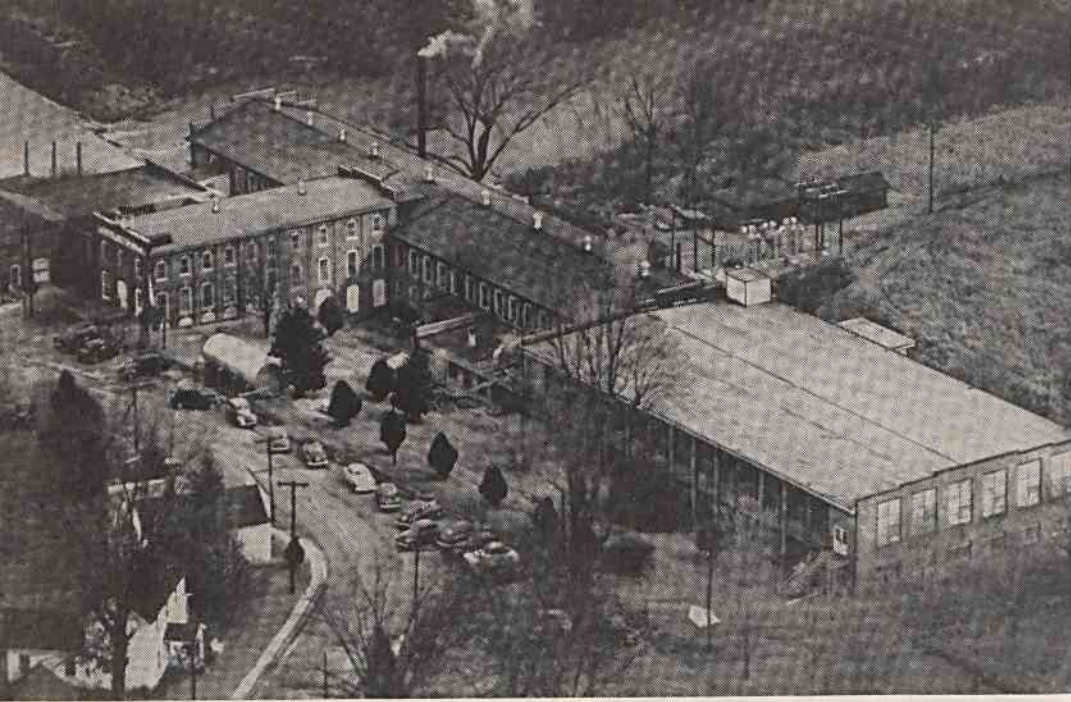
Worthville

Representative employees of the Worthville Sheeting Mill — new members of “the Fieldcrest family”—are pictured as they perform some of the operations at the Worthville plant.

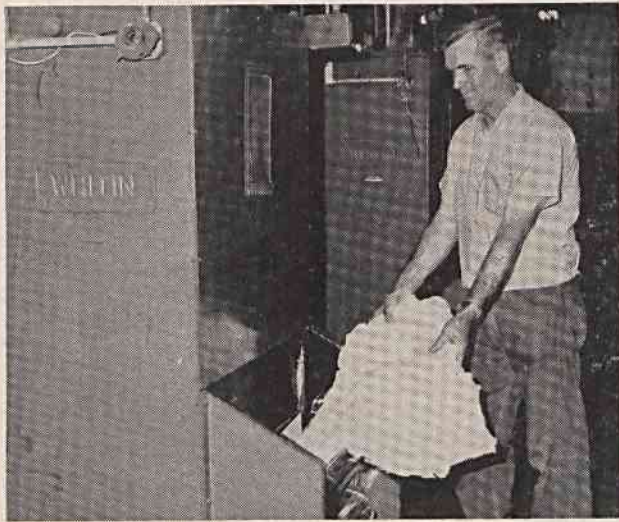
The mill is located in the community of Worthville in Randolph County, two miles off of U.S. 220 at Randleman and approximately 20 miles south of Greensboro. Close to 200 people are employed there in the manufacture of sheeting which is bleached and dyed at the North Carolina Finishing Company Division at Salisbury.

Fieldcrest Mills, Inc., acquired the Worthville plant (then called the Leward Mill), the North Carolina Finishing Company, at Salisbury, and the Alexander Mill, at Forest City, from E. I. du Pont Mills Corporation, June 30, 1964.

Following the change in ownership, a number of improvements designed to improve quality and increase efficiency of production were made.



Worthville Sheeting Mill, on Deep River in Randolph County, has operated since 1880.



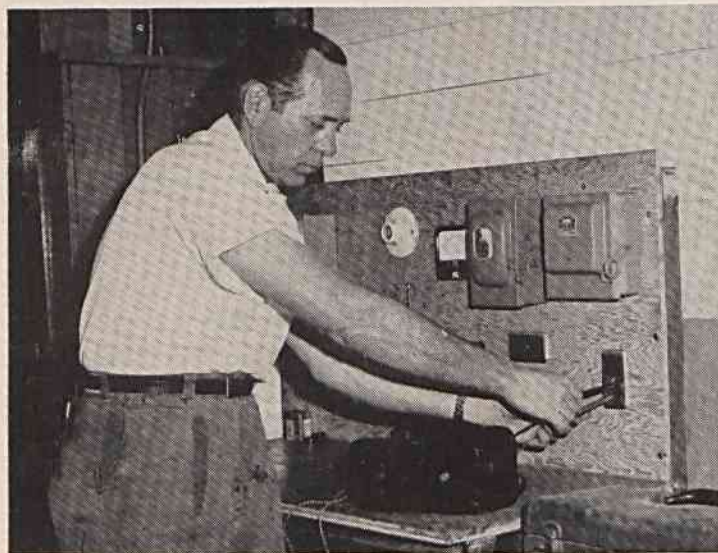
In first operation after bales are opened, J. W. Davis, picker tender, feeds cotton into opener hopper.



The cards in Worthville mill are equipped with all-metallic wire clothing. Operator here is C. C. Marsh.



Ed Tysinger is model Whitin operator.



Merriell Powers, electrician, checks out a voltage meter on a control panel he built recently in Plant Service Department.



Howard Slack (shown at right), slasher tender, and Ray York, helper, operate modern West Point high-speed slasher.