

THE MILL WHISTLE

Fieldcrest

COORDINATED FASHIONS
FOR BED AND BATH



Karastan
AMERICA'S FINEST TOWEL LOOMS

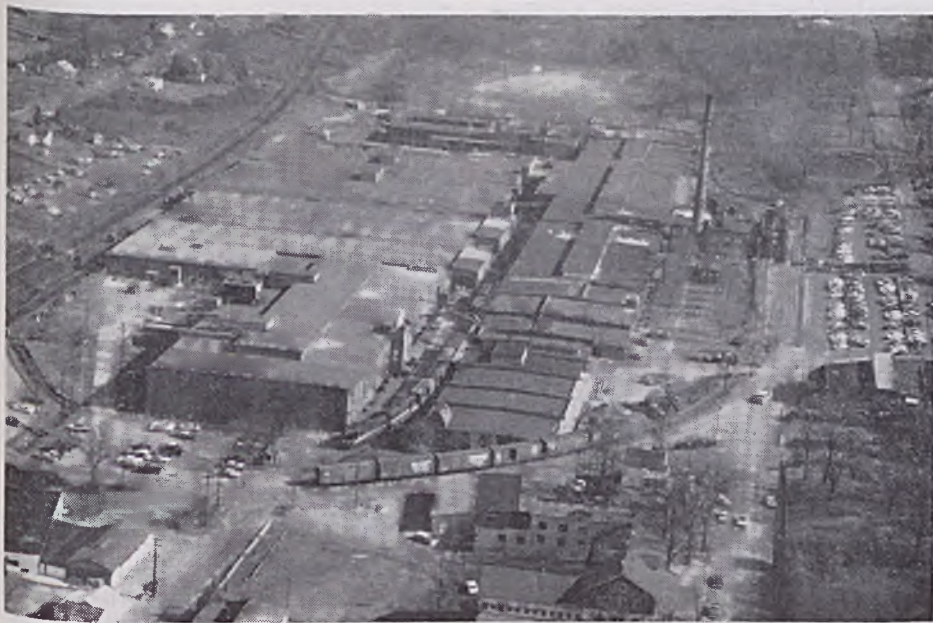
FIELDCREST MILLS, INC. • Plants at Asheville, Draper, Forest City, Greenville, Laurel Hill, Leakville, Mount Holly, Salisbury, Smithfield, Spray and Woffville, N.C.; Fildate, Va.; Columbus, Ga.; Philadelphia, Pa.; and Auburn, N.Y.

VOL. XXVI

Eden, N. C., March 4, 1968

NO. 17

\$5 Million To Be Spent For Expansion



NEW AERIAL PHOTO shows Blanket and Sheeting Mills which furnish jobs for close to 1,400 people in the Draper community of Eden. Both are greige mills, manufacturing blanket material which is finished at the Central Finishing Mill and sheeting finished at the new Sheet Finishing Mill.

A \$5 million expansion at the Fieldcrest Towel Mill in Fieldale, Va., was announced by G. W. Moore, president of Fieldcrest Mills, Inc.

This expansion program will involve additional terry looms to produce high quality, highly styled terry towels and additional yarn manufacturing facilities to provide yarn for the additional looms.

The first lot of looms has already been received, and it is expected that all the looms involved in the expansion program will be operating by the end of May.

Construction will begin immediately on the space to be occupied by the additional yarn manufacturing facilities, and it is expected that the yarn manufacturing facilities will be in operation by early fall.

In addition, work is already underway on a new three-story addition to the present east side of the Finishing Building which will provide space for cutting, sewing, warehousing, etc., of the additional towel production.

The total expansion program will provide approximately 250 additional jobs upon completion. The Fieldale Towel Mill now employs approximately 1,300 people.

\$27 Million Disbursed In Eden In 1967

Fieldcrest Mills' operations added over \$27 million to the economy of Eden in 1967. Company records show that, in the Eden area alone, \$27,280,000 was disbursed for payrolls, taxes, land, buildings, machinery and equipment.

The major contribution to the prosperity of Eden was the company's payrolls of \$23,139,000 paid to the 4,650 Fieldcrest employees in the area.

Property taxes paid to Leaksville, Spray, Draper and the Meadow Greens Sanitary District totaled \$192,000. The company's Rockingham County taxes were \$366,000; and the total property taxes paid in Rockingham County, including city and county taxes, were \$558,000.

Fieldcrest in 1967 paid \$1,110,000 in Social Security taxes and payroll taxes for unemployment insurance for its Eden employees.

By law, the company pays half and the employees half of the Social Security taxes; but the company pays 100% of

the taxes to provide the state-administered compensation for eligible employees when out of work.

The company's expenditures for land, buildings, machinery and equipment in the Eden area amounted to \$2,473,000, making a total of \$30,268,000 in capital expenditures in the Eden area since October 1, 1953, when Fieldcrest Mills, Inc. was organized.

In addition to the over \$27 million pumped into the local economy by direct payments, large sums were distributed in the form of fringe benefits to the 4,650 active employees and their dependents and for pensions to the company's retired employees, a majority of whom live in the Eden area.

The expenditures made for purchases of goods and services from local firms are not included, nor do the figures include money paid out at other manufacturing locations or for sales activities. Expenditures for raw materials also are excluded.



90th BIRTHDAY—J. Platt Turner of Eden, a retired Fieldcrest, recently celebrated his 90th birthday. He was one of first employees to retire when the company Pension Plan was started.