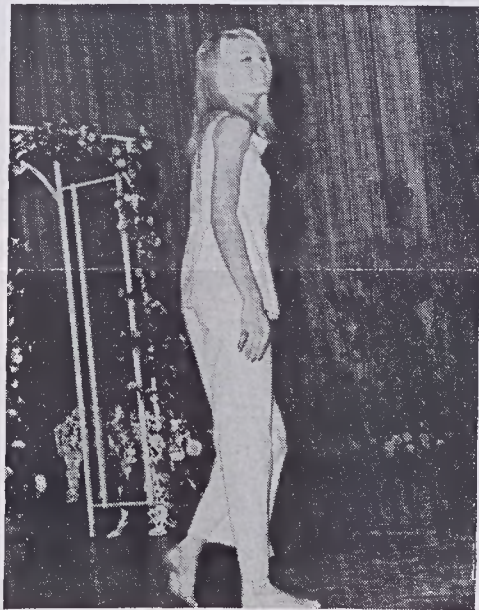




Models, shown from head of line from left, are Mesdames A. L. O'Leary, Frank Odell, C. R. Wright, F. W. Klein, G. W. Moore, H. C. Pace, III, K. R. Baggett, R. I. Wilkerson, J. A. The child models are Vickie Neale (at left) and Dawn Joyce.



A. L. Jackson models abba for beach, fashioned from Neon Lion beach towels.



Jan Roland shows lounging pajamas made from pastel Perfection NO IRON sheets.



Mrs. G. W. Moore is modeling a leisure robe made from Lazy Daisy towels.

Mrs. Frank Odell wears bridal minigown fashioned from "1776" matelasse bedspread.

At the morning performance of fashion show in Morehead High School Auditorium, Mrs. F. W. Klein models smoker made from Masterpiece towels.

