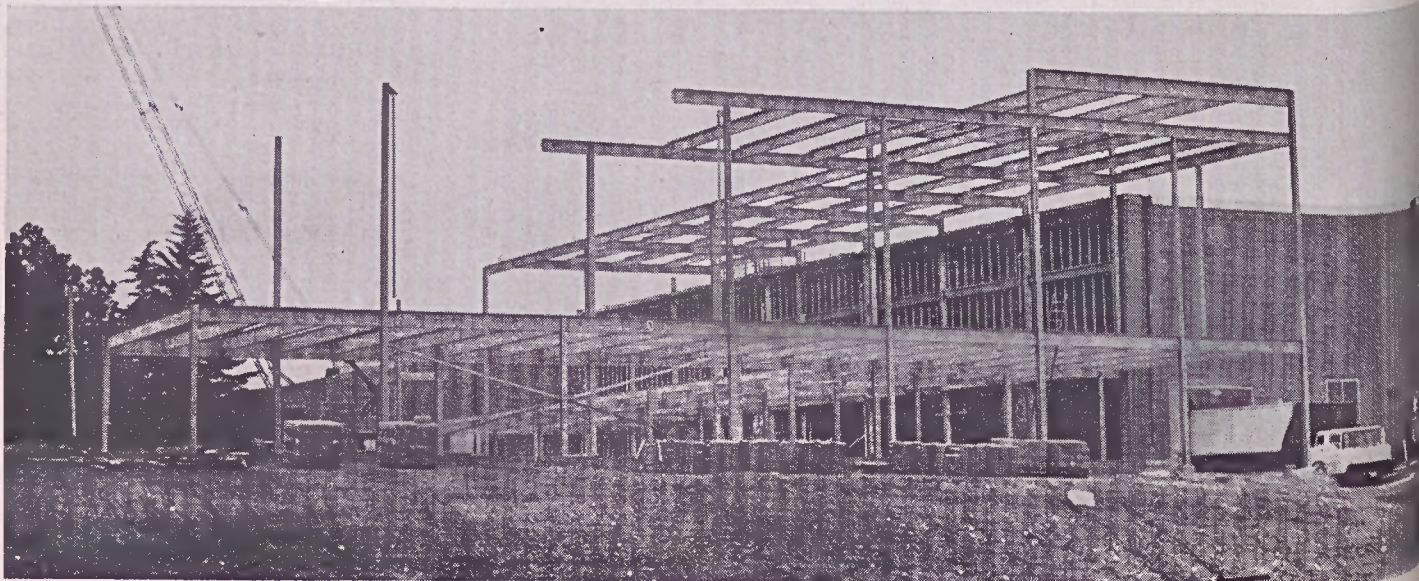
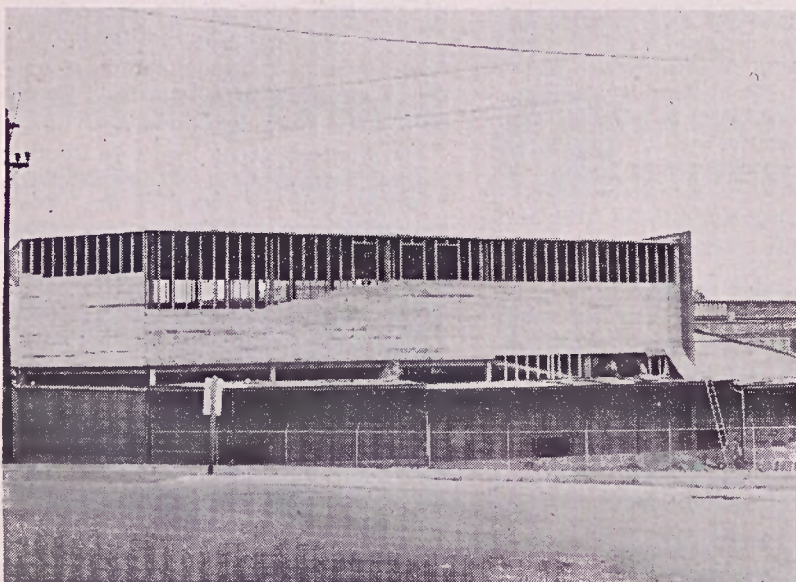


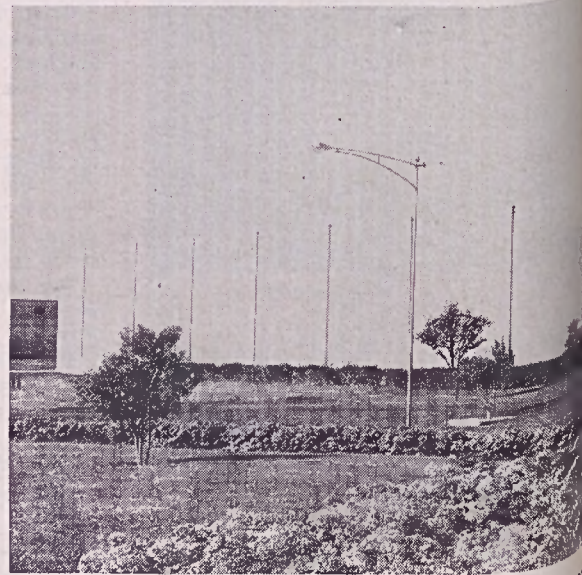
Progress Made In \$20-Million



First phase of expansion program at Bedsread Mill, to cost \$4½-million, includes purchase of 80 more looms and large additions to the weave room, twister room and dyehouse. Picture above shows construction under way on weave room addition.



Among several projects at Eden, a second story is being added to the cotton storage warehouse at the Blanket and Sheeting Mills.



Dallas Service Center has been expanded to approximately double its former size. More space was needed due to

Pictures on these pages show the progress being made on some of the projects in the \$20-million expansion and improvement program being carried on at Fieldcrest in 1969.

The major projects are the \$6-million expansion program at the Laurelcrest Carpet Plant and the expansion of the Bedsread Mill, the first phase of which will cost \$4½-million.

Construction is nearing completion on the new parallel or semi-worsted spinning plant at Laurel Hill and machinery is being installed at the present time. The mill is scheduled to begin operation in the early fall. Construction is well along on the warehouse service center located adjacent to the spinning mill. The warehouse service center is expected to be ready for occupancy by the end of September.

The present expansion at the Bedsread Mill is scheduled for com-

pletion by the end of the year. It will include 80 additional looms and the addition of a twister room, twister room and the dyehouse.

In connection with the expansion at Eden, an addition has been made to the Bedsread Finishing Mill. Also, a new jig dyeing department for the Blanket Finishing Mill has been added.

Several other projects are being carried on to provide space for additional machinery. Included are a second story addition to the Karastan Mill, and an addition to the twister room at the Sheeting Mill.

THE MILL WHISTLE