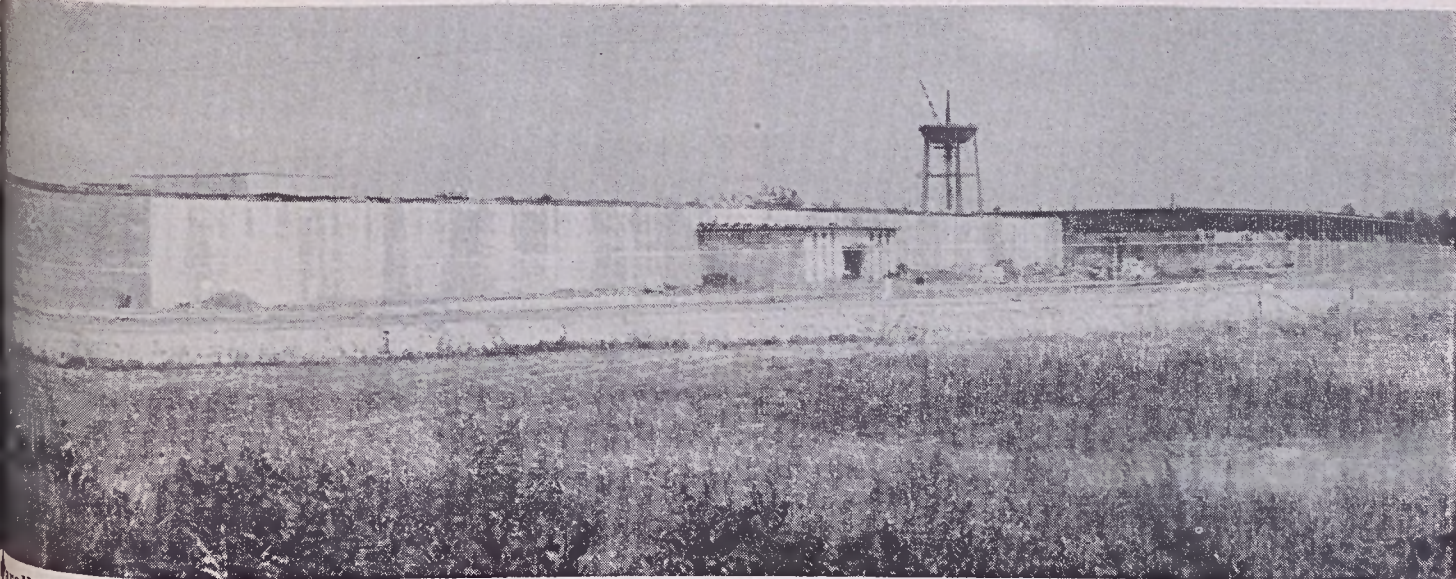


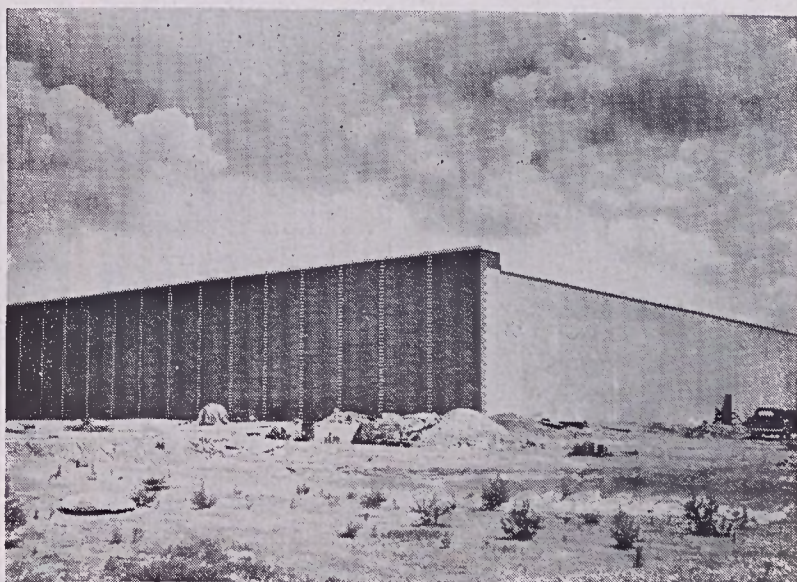
Expansion And Improvement Program



parallel or semi-worsted spinning mill and warehouse service center (right) are being built in \$6-million expansion of Laurel-crest Carpet Plant at Laurel Hill. New facilities are expected to be ready for operation in the early fall.



continually expanding business in Southwest territory. Contract has been let for new Los Angeles Service Center.



As part of the expansion of the bedspread operation, this addition was built onto the warehouse portion of Bedspread Finishing Mill.

ject involves the purchase of large additions to the weave

the bedspread operation at warehouse portion of the Bed-bleachery equipment at the to make room for an enlarged

at Eden in 1969 are mainly or more space for warehouse- the yarn storage building at picker room and spinning

Under way now is the addition of a second story to the cotton warehouse at the Blanket and Sheeting Mills.

In a project recently completed, the Dallas Service Center at Arlington, Texas, was expanded to about double its former size, now containing approximately 60,000 square feet.

This expansion was necessitated by Fieldcrest's continually expanding business in the Southwest, the territory primarily covered by this particular service center.

In another expansion in warehouse-service center facilities, the contract has been let for the construction of a new building for the Los Angeles Service Center, which will cost over \$1-million and which will more than double the present space. The new building is scheduled to be completed in December.