

Fieldcrest Yard Crew Maintains 150 Acres Of Grounds



Fieldcrest's Yard Maintenance Crew, Eden, includes, left to right, front row, David Yoder, Charles Martin, Gary Stratton, James Dillon, Posey Snead, Roy Self, Ronald Harris, James

Hodges, Jerry Dunn and Bethel King; back row, John Pinkard, Jack Harris, assistant foreman; Jim Robertson, supervisor of ground maintenance; Billy Sawyers, trucking; and Irvin Mabe.

Do you think it's a big job to keep that patch of lawn in front of your house looking nice — with all the mowing, trimming, edging and so on that must be done?

The Yard Maintenance crew of Fieldcrest also has all this mowing, trimming, edging and so on to do. But their "patch of lawn" totals 150 acres which must be maintained — regularly and attractively.

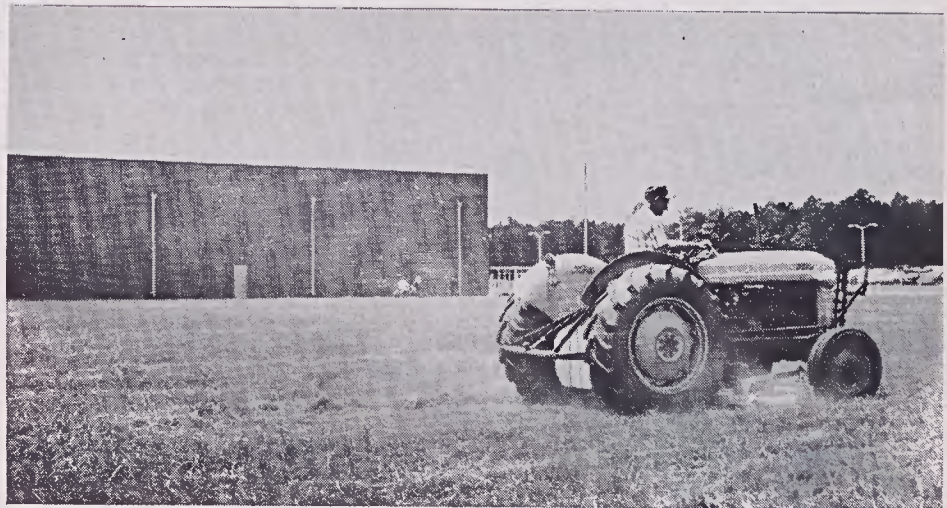
They do have one advantage over the average homeowner, however. Fourteen men (three of them truck drivers) are in the crew and they have all the necessary equipment to do the job properly and easily as possible.

The 150 acres covers all Eden area mills, the Fieldcrest Store and General Offices. The Yard Maintenance Crew comes under the Engineering Department and is headed by Jim Robertson, supervisor of ground maintenance. Jack Harris is the assistant foreman.

Each location in the Eden area receives attention once a week. A schedule is followed so that each morning and each afternoon, Monday through Friday, the crew has a particular place to work.

In addition to the normal mowing and trimming operations, the crew has numerous other jobs to perform in maintaining the yards. One of these is to cut down trees when necessary. This might be a tree that is dying, or when construction is planned, the crew takes down any trees that would be in the way. If an area needs flowers or trees planted, the yard maintenance crew also handles this.

In the winter months, snow and ice removal becomes the job of this group. They have to clear off sidewalks and all parking lots. Most important of all is the clearing of loading ramps at the mills. In snow removal, two-way radios in three trucks and two jeeps are invaluable in keeping the men in close communication with one another so that



On grounds at Sheet Finishing Mill, Irvin Mabe is using 6-ft. rotary mower.

they know where they are needed next. And there is still MORE that this crew does.

Ground Maintenance also is in charge of the Dempster Dumpsters, the specially-built trucks that regularly pick up trash at the mills. There are two trucks, one being in use at all times, the other for back-up. The truck picks up trash at all mills, the Store and General Offices. In addition, as a community service, they pick up trash at Morehead Memorial Hospital.

Cleaning parking lots and painting the zone lines for parking is another job for this group. Painting of zone lines is done every year during the mills' vacation while the lots are empty. This requires six full days to do, with nearly 60 acres of parking lots.

All of these jobs are just the "routine work". There are calls every day for some assistance that someone, somewhere needs. This can range from a mill having something which needs hauling

away to a cat up a tree that needs help getting down.

Each man in the Yard Maintenance crew has a specific job to do — some run the riding mowers, some handle the other mowers, some do the edging. While each is very proficient in his job, few come with experience in this type work. Most of the men are trained on the job.

All of the men have a great deal of pride in the work they do and in the appearance of the grounds, but their safety record is also cause for much pride. The equipment they work with is considered about as dangerous as any that is used, but there has never been a serious injury on this job. No one has ever been disabled; the only injuries have been minor cuts.

Quietly and without fanfare the Yard Maintenance crew is responsible for Fieldcrest's outward appearance and a beautiful, well-landscaped greeting to visitors.